

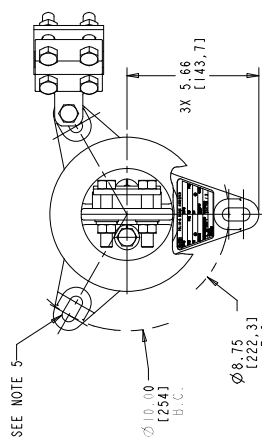
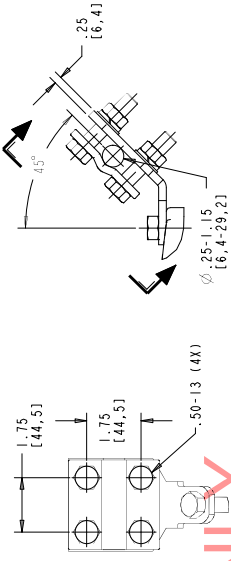
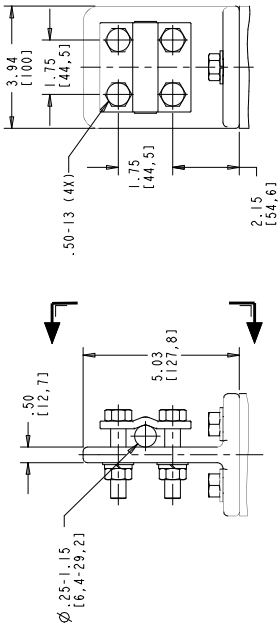
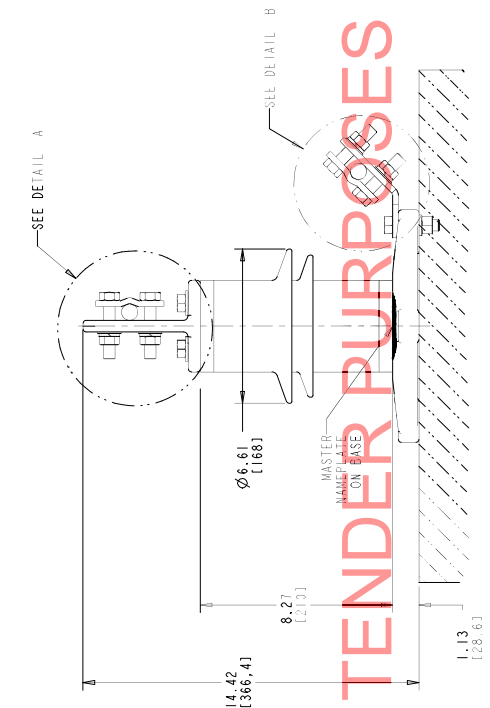
STYLE NO.	RATINGS		TOV		MAXIMUM RESIDUAL VOLTAGE WITH CURRENT WAVE (kV PEAK)			
	(kV rms)	(kV rms)	(kV rms)	(kV rms)	SPL (S1PL)	LPL (L1PL)	8/20 μ S	FW
	V _{COV}	V _{MOV}	500 A	10 kA	20 kA	10 kA	0.5 μ S	
	STANDARD CREEP							
0003S4002ASN	3	2.55	θ 10 sec = 4.93	9.77	10.9	11.3	12.9	12.8
0004S4003ASN	4	3.40	θ 10 sec = 4.93	10.0	11.2	11.6	13.3	13.1
0005S4004ASN	5	4.25	θ 10 sec = 6.57	12.3	13.7	14.4	16.3	16.1
0006S4005ASN	6	5.10	θ 10 sec = 6.57	12.8	14.3	15.0	17.0	16.8
0007S4006ASN	7	5.95	θ 10 sec = 9.86	17.7	19.8	21.0	23.6	23.3
0008S4007ASN	8	6.80	θ 10 sec = 9.86	18.5	20.7	22.0	24.7	24.4
0009S4008ASN	9	7.65	θ 10 sec = 9.86	19.0	21.3	22.6	25.4	25.0
0010S4008ASN	10	8.40	θ 10 sec = 11.0	21.0	23.5	25.0	28.0	27.6

ABB POLIM-S SURGE ARRESTER			
TYPE NO.	SERIAL NO.	BY	DATE
18 lbs			
NONE			
LINE & GROUND TERMINALS	LINE, NO. CLAMP	63	KA RMS
IL 38-340-1	STATION / 3		
MADE IN USA			

MASTER NAMEPLATE
 * ASSIGNED AT THE TIME OF PRODUCTION AND RECORDED IN THE PROPER LOCATIONS

- NOTES:**
- FOR MINIMUM PHASE-TO-GROUND AND PHASE-TO-PHASE CLEARANCES WITH TYPE POLIM-S SURGE ARRESTERS, OTHER APPROVED STANDARDS, OTHER SPECIFICATIONS OR LOCAL CODES MAY SUPERSEDE DISTANCES SPECIFIED.
 - ARRESTER ASSEMBLY CONSISTS OF ARRESTER UNIT, LINE & GROUND TERMINALS WITH CLAMPS, AND .50 INCH HARDWARE.
 - LINE & GROUND TERMINALS CAN ACCOMMODATE CU OR AL CABLE SIZE NO. 2 TO 1000 MCM (.25 [6.4] TO 1.15 [29.2] DIA.)
 - LINE & GROUND TERMINAL CLAMP CAN BE MOUNTED AS SHOWN OR ROTATED 90° AS REQUIRED.
 - MTG. SLOTS FOR .50 INCH HARDWARE (3) EQUALLY SPACED, THICKNESS OF LUG = .88 [22.4]
 - DESIGNED FOR VERTICAL OR HORIZONTAL MOUNT.
 - PRESSURE RELIEF CLASS IS 63 KA RMS SYMMETRICAL.
 - NOMINAL CREEPAGE DISTANCE 11.3 [287]
 - MAXIMUM ARRESTER WEIGHT 18.0 lbs (8.2 kg).

FOR TENDER PURPOSES ONLY



ALL DIMENSIONS IN INCHES (MM) UNLESS NOTED

ABB INC.
 Power Products Division
 500 Distribution Circle, W. Chester, PA 19380

POLIM-S IEEE STATION / IEC CLASS 3
 POLYMER ARRESTER (SSTL NAMEPLATE)
 Z SHED HOUSING OUTLINE

ABB INC.
 500 Distribution Circle, W. Chester, PA 19380

SCALE: 1:1
 SHEET 1 OF 1

DATE: 07/21/2015
 TIME: 10:00

4F 40 16 5

DRILLING PLAN

07 FEBRUARY 9, 2010	FORMAT TITLE BLOCK ADDRESS UPDATED	DJK
02 JULY 20, 2010	TERMINAL CALLOUT TO LINE (SHEET 1 OF 2)	DJK
03 AUGUST 1, 2011	DRILLING PLAN RELOCATED	DJK
04 DECEMBER 10, 2013	DETAIL B, 25 ADDED	DJK
05 JULY 21, 2015	NOTE 9: 11.3 WAS 11.0	DJK