

STYLE NO.	RATINGS (kV rms)		TOV (kV rms)	MAXIMUM RESIDUAL VOLTAGE WITH CURRENT WAVE (kV PEAK)				
	VOLTAGE Vr	MCOV VmcoV		WITH PRIOR ENERGY SINGLE IMPULSE OF 4.5 kJ/kVr	SPL (SIPL) 30/60 μS	LPL (LIPL) 8/20 μS	FWW 0.5 μS	
STANDARD CREEP								
0045SA037ASA46	45	36.5	010 sec = 49.3	89.1	99.9	108	119	118
0048SA039ASA46	48	39.0	010 sec = 52.6	95.6	107	116	128	126
0051SA041ASA46	51	41.0	010 sec = 55.8	101	114	123	136	134
0054SA042ASA46	54	42.0	010 sec = 59.1	107	120	130	144	142
0055SA044ASA46	55	44.0	010 sec = 60.2	109	122	132	146	144
0060SA048ASA46	60	48.0	010 sec = 65.7	119	133	144	159	157
0066SA053ASA46	66	53.0	010 sec = 72.3	131	147	159	175	173
EXTRA CREEP								
0012SC010ASA46	12	10.2	010 sec = 13.1	25.1	28.1	30.0	33.5	33.1
0015SC012ASA46	15	12.7	010 sec = 16.4	31.3	35.0	37.5	41.8	41.2
0018SC015ASA46	18	15.3	010 sec = 19.7	37.4	41.9	45.0	50.0	49.3
0021SC017BSA46	21	17.0	010 sec = 23.0	41.8	46.9	50.4	55.9	55.2
0024SB019ASA46	24	19.5	010 sec = 26.3	47.7	53.5	57.6	63.9	63.0
0027SB022ASA46	27	22.0	010 sec = 29.6	53.6	60.1	64.8	71.8	70.8
0030SB024ASA46	30	24.4	010 sec = 32.9	59.5	66.7	72.0	79.7	78.6
0033SB027ASA46	33	27.0	010 sec = 36.1	65.4	73.4	79.2	87.6	86.4
0036SB029ASA46	36	29.0	010 sec = 39.4	71.3	80.0	86.4	95.5	94.2
0039SB031BSA46	39	31.5	010 sec = 42.7	77.3	86.6	93.6	103	102
0042SB034BSA46	42	34.0	010 sec = 46.0	83.3	93.4	101.2	112	110

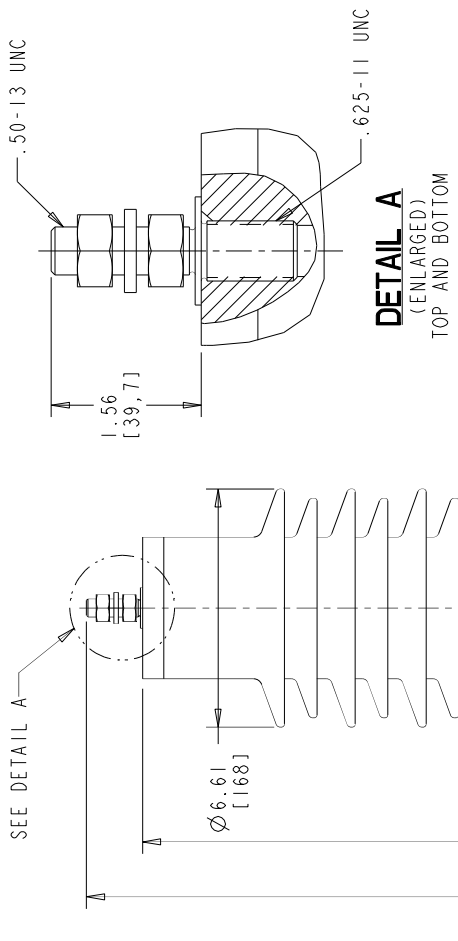
ABB Date	POLIM-S U.S.A.	
Style No.	Set. No.	*
Weight 47 lbs	MCOV	* kV Rating * kV

MASTER NAMEPLATE

* ASSIGNED AT THE TIME OF PRODUCTION AND RECORDED IN THE PROPER LOCATIONS

- NOTES:
- FOR MINIMUM PHASE-TO-GROUND AND PHASE-TO-PHASE CLEARANCES WITH TYPE POLIM-S SURGE ARRESTERS, REFER TO THE POLIM-S PRODUCT BULLETIN (26NM110077). OTHER APPARATUS STANDARDS, OTHER SPECIFICATIONS OR LOCAL CODES MAY SUPERCEDE DISTANCES SPECIFIED.
 - ARRESTER ASSEMBLY CONSISTS OF ARRESTER UNIT, LINE & GROUND TERMINALS WITH .50 INCH HARDWARE.
 - DESIGNED FOR VERTICAL OR HORIZONTAL MOUNT.
 - MAX CANTILEVER LOAD 20,000 in-lbs (2260 Nm).
 - PRESSURE RELIEF CLASS IS 63 kA RMS SYMMETRICAL.
 - NOMINAL CREEPAGE DISTANCE 67.0 (1701).
 - MAXIMUM ARRESTER WEIGHT 47.0 lbs (21.3 kg).

01	MARCH 31, 2011	ADDED STYLE NO.:	0012SC010ASA46
02	JULY 29, 2011	NOTE 6: CREEPAGE 67.0	0015SC012ASA46
03	NOVEMBER 6, 2013	WAS 66.7	0018SC015ASA46
			0021SC017BSA46
			0024SB019ASA46
			0027SB022ASA46
			0030SB024ASA46
			0033SB027ASA46
			0036SB029ASA46
			0039SB031BSA46
			0042SB034BSA46



FOR TENDER PURPOSES ONLY

ALL DIMENSIONS IN INCHES [MM] UNLESS NOTED

This drawing is the property of ABB INC. and contains proprietary and confidential information which must not be duplicated, used or disclosed other than expressly authorized by ABB INC.

POLIM-S IEEE STATION / IEC CLASS 3
POLYMER ARRESTER (CUBICAL)
20 SHED HOUSING OUTLINE

ABB Inc.
Power Products Division
100 Distribution Circle, Mt. Pleasant, PA 15666

SCALE 0:20
CAD DRW PRDZ W/IDFIRE 2.0

SHEET 1 OF 1
REV. DESCRIPTION & DATE

0012SC010ASA46
0015SC012ASA46
0018SC015ASA46
0021SC017BSA46
0024SB019ASA46
0027SB022ASA46
0030SB024ASA46
0033SB027ASA46
0036SB029ASA46
0039SB031BSA46
0042SB034BSA46

DRW: KRYGOWSKI
CHK: DJK
APP: DJK

4F4028

pro_e-bdr-c