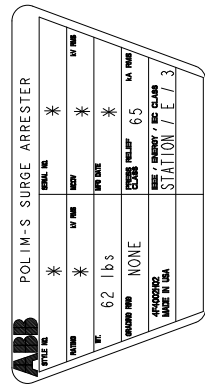


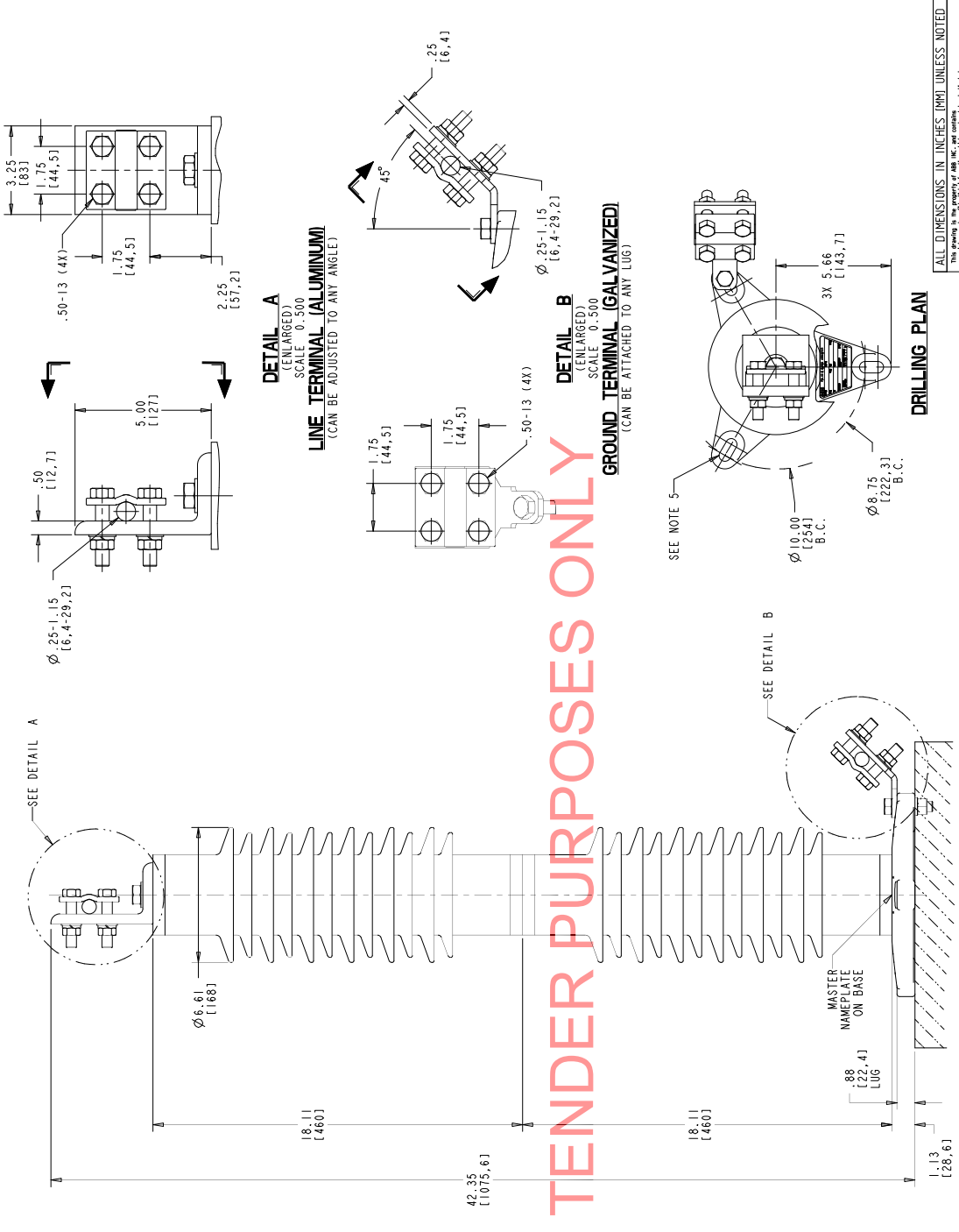
STYLE NO.	RATINGS		TOV (kV rms)	MAXIMUM RESIDUAL VOLTAGE WITH CURRENT WAVE (kV PEAK)				
	VOLTAGE Vr	MCOV Vmcov		SPL (SIPL) 8/20 μS	LPL (LIPL) 30/60 μS	FW 0.5 μS		
				500 A	3 kA	10 kA	20 kA	10 kA
				STANDARD CREEP				
0072SA057A	72	57.0	010 sec = 78.8	142	159	173	191	188
0075SA060A	75	60.0	010 sec = 82.1	148	166	180	199	196
0078SA063A	78	63.0	010 sec = 85.4	155	173	188	207	204
0081SA065A	81	65.0	010 sec = 88.7	160	180	195	215	212
0084SA068A	84	68.0	010 sec = 92.0	166	186	202	223	220
				EXTRA CREEP				
0024SC019A	24	19.5	010 sec = 26.3	47.7	53.5	57.6	63.9	63.0
0027SC022A	27	22.0	010 sec = 29.6	53.6	60.1	64.8	71.8	70.8
0030SC024A	30	24.4	010 sec = 32.9	59.5	66.7	72.0	79.7	78.6
0033SC027A	33	27.0	010 sec = 36.1	65.4	73.4	79.2	87.6	86.4
0036SC029A	36	29.0	010 sec = 39.4	71.3	80.0	86.4	95.5	94.2
0039SC031B	39	31.5	010 sec = 42.7	77.3	86.6	93.6	103	102
0042SC034B	42	34.0	010 sec = 46.0	83.3	93.4	101	112	110
0045SB037A	45	36.5	010 sec = 49.3	89.1	99.9	108	119	118
0048SB039A	48	39.0	010 sec = 52.6	95.6	107	116	128	126
0051SB041A	51	41.0	010 sec = 55.8	101	114	123	136	134
0054SB042A	54	42.0	010 sec = 59.1	107	120	130	144	142
0055SB044A	55	44.0	010 sec = 60.2	109	122	132	146	144
0060SB046A	60	48.0	010 sec = 65.7	119	133	144	159	157
0066SB053A	66	53.0	010 sec = 72.3	131	147	159	175	173



MASTER NAMEPLATE
* ASSIGNED AT THE TIME OF PRODUCTION AND
RECORDED IN THE PROPER LOCATIONS

- NOTES:**
- FOR MINIMUM PHASE-TO-GROUND AND PHASE-TO-PHASE CLEARANCES REFER TO IEC 602-11 AND C62-26, AND OTHER APPARATUS STANDARDS, WHICH APPLY TO THIS PRODUCT.
 - ARRESTER ASSEMBLY CONFORMS TO IEC 60099-1 AND IEC 60099-2.
 - GROUND TERMINALS WITH CLAMPS AND 50 INCH HARDWARE.
 - LINE & GROUND TERMINALS CAN ACCOMMODATE CU OR AL CABLE.
 - SIZE NO. 2 TO 1000 MCM (.25 (6.4) TO 1.15 (29.2) DIA.
 - LINE & GROUND TERMINAL CLAMP CAN BE MOUNTED AS SHOWN OR ROTATED 90° AS REQUIRED.
 - MTG. SLOTS FOR .50 INCH HARDWARE (3) EQUALLY SPACED; THICKNESS OF LUG = .88 (22.4)
 - DESIGNED FOR VERTICAL OR HORIZONTAL MOUNT.
 - MAX CANTILEVER LOAD 20,000 IN-LBS (2260 Nm).
 - MAXIMUM CREEPAGE CLASS 84 (21.1) DIA.
 - MAXIMUM ARRESTER WEIGHT 62.0 lbs (28.1 kg).

REV.	DESCRIPTION & DATE
01	APRIL 7, 2011
02	JULY 29, 2011
03	NOVEMBER 6, 2013
04	MAY 14, 2018



FOR TENDER PURPOSES ONLY

ALL DIMENSIONS IN INCHES (MM) UNLESS NOTED	
POLIM-S / IEEE STATION E / IEC CLASS 3 POLYMER ARRESTER 24 SHED HOUSING OUTLINE	
ABB INC. Power Product Division 300 Distribution Circle, W. Pittsburg, PA 15066	ABB INC. Power Product Division 300 Distribution Circle, W. Pittsburg, PA 15066
SCALE: AS SHOWN	SHEET 1 OF 1
DATE: 04/07/2011	4F 4030
REV. 04	4