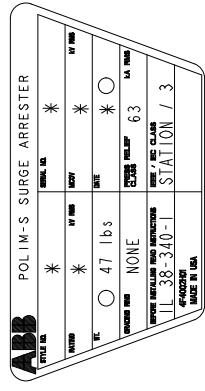


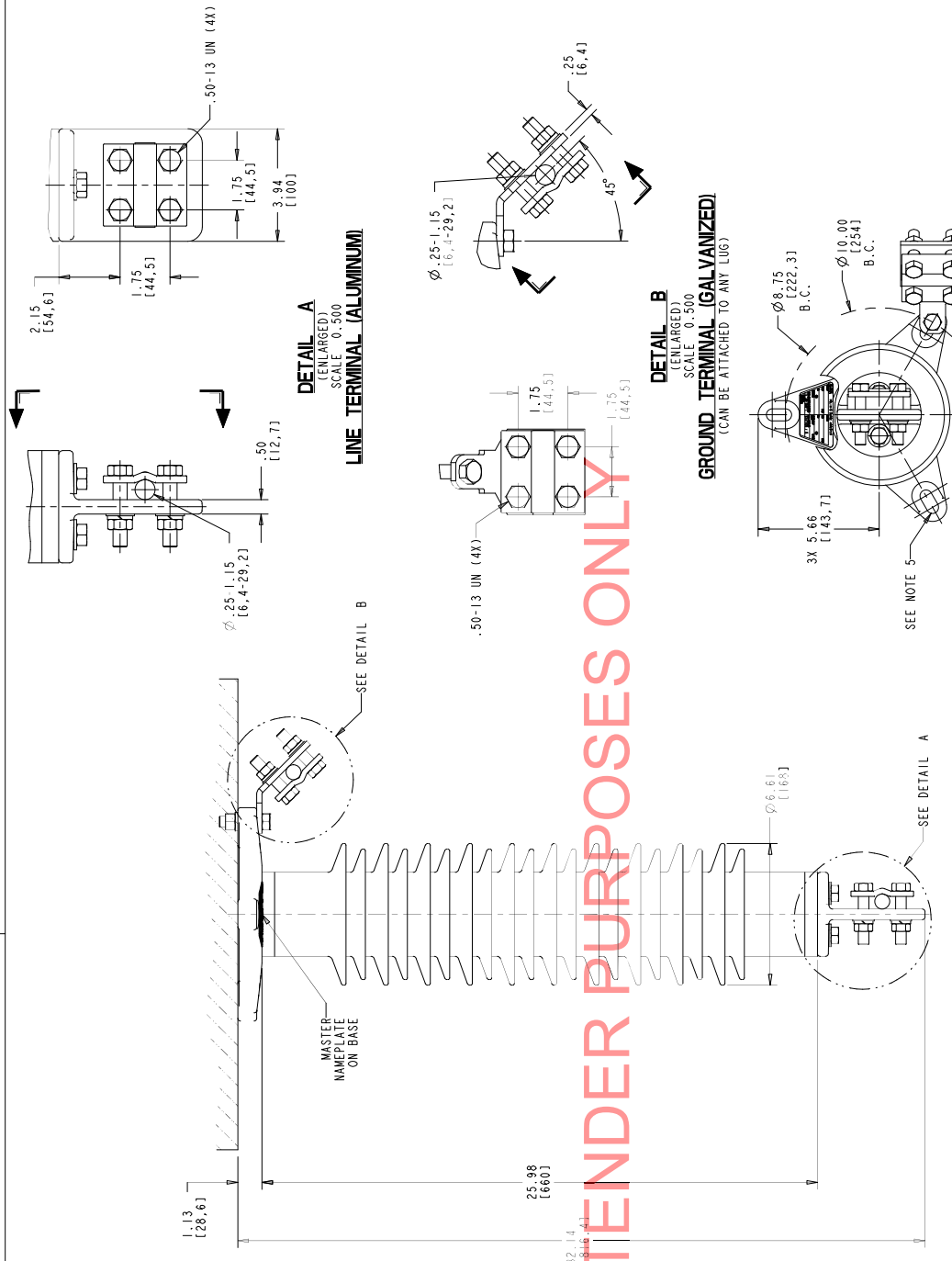
STYLE NO.	RATINGS		TOV (kV rms)	MAXIMUM RESIDUAL VOLTAGE WITH CURRENT WAVE (kV PEAK)				
	VOLTAGE V _r	MCOV V _{mco}		WITH PRIOR ENERGY 30/60 μS	SPL (SIPL)	LPL (LIPL)	FW	
			5.6 kJ/kVcov	500 A	3 kA	10 kA	20 kA	10 kA
STANDARD CREEP								
00455A037AURHSN	45	36.5	010 sec ± 49.3	89.1	99.9	108	119	118
00465A039AURHSN	48	39.0	010 sec ± 52.6	95.6	107	116	128	126
00515A041AURHSN	51	41.0	010 sec ± 55.8	101	114	123	136	134
00545A042AURHSN	54	42.0	010 sec ± 59.1	107	120	130	144	142
00555A044AURHSN	55	44.0	010 sec ± 60.2	109	122	132	146	144
00605A048AURHSN	60	48.0	010 sec ± 65.7	119	133	144	159	157
00665A053AURHSN	66	53.0	010 sec ± 72.3	131	147	159	175	173
EXTRA CREEP								
00125C010AURHSN	12	10.2	010 sec ± 13.1	25.1	28.1	30.0	33.5	33.1
00155C012AURHSN	15	12.7	010 sec ± 16.4	31.3	35.0	37.5	41.8	41.2
00185C015AURHSN	18	15.3	010 sec ± 19.7	37.4	41.9	45.0	50.0	49.3
00215C017AURHSN	21	17.0	010 sec ± 23.0	41.8	46.9	50.4	55.9	55.2
00245B019AURHSN	24	19.5	010 sec ± 26.3	47.7	53.5	57.6	63.9	63.0
00275B022AURHSN	27	22.0	010 sec ± 29.6	53.6	60.1	64.8	71.8	70.8
00305B024AURHSN	30	24.4	010 sec ± 32.9	59.5	66.7	72.0	79.7	78.6
00335B027AURHSN	33	27.0	010 sec ± 36.1	65.4	73.4	79.2	87.6	86.4
00365B029AURHSN	36	29.0	010 sec ± 39.4	71.3	80.0	86.4	95.5	94.2
00395B031AURHSN	39	31.5	010 sec ± 42.7	77.3	86.6	93.6	103	102
00425B034AURHSN	42	34.0	010 sec ± 46.0	83.3	93.4	101	112	110



★ ASSIGNED AT THE TIME OF PRODUCTION AND RECORDED IN THE PROPER LOCATIONS

- NOTES:
- FOR MINIMUM PHASE-TO-GROUND AND PHASE-TO-PHASE SEPARATION WITH THE POLIM-S SURGE ARRESTER (0077), OTHER APPROPRIATE STANDARDS, OTHER SPECIFICATIONS OR LOCAL CODES MAY SUPERSEDE DISTANCES SPECIFIED.
 - ARRESTER ASSEMBLY CONSISTS OF ARRESTER UNIT, LINE & GROUND TERMINALS WITH CLAMPS, AND .50 INCH HARDWARE.
 - LINE & GROUND TERMINALS CAN ACCOMMODATE CU OR AL CABLE. SIZE NO. 2 TO 1000 MCM (1.25 (6.4) TO 1.15 (29.2) DIA.
 - LINE & GROUND TERMINAL CLAMP CAN BE MOUNTED AS SHOWN OR ROTATED 90° AS REQUIRED.
 - MTG. SLOTS FOR .50 INCH HARDWARE (3) EQUALLY SPACED FOR PRESSURE OF LUGS FOR 222.1 MOUNT.
 - MAXIMUM ALLOWABLE LOAD 2000 LBS (2260 N).
 - PRESSURE RELIEF CLASS IS 63 KA RMS SYMMETRICAL.
 - NOMINAL CREEPAGE DISTANCE 67.0 (1701).
 - MAXIMUM ARRESTER WEIGHT 47.0 lbs (21.3 kg).

REV. DESCRIPTION & DATE	01 OCTOBER 12, 2011
NEW NOTE 6 ADDED	
NOTE 9 CANCELED	
NOTE 8 CANCELED	
NOTE 7 CANCELED	
DRILLING PLAN RELOCATED	
DWG	
02 DECEMBER 13, 2013	



ALL DIMENSIONS IN INCHES (MM) UNLESS NOTED	
POLIM-S IEEE STATION / IEC CLASS 3 POLYMER ARRESTER (UNDERHUNG) W/ SSTL NAMEPLATE 20 SHED HOUSING OUTLINE	
ABB INC. Power Product Division 500 Distribution Circle, Ft. Pittman, PA 15066	ABB INC. Power Product Division 500 Distribution Circle, Ft. Pittman, PA 15066
SCALE: AS SHOWN	SHEET 1 OF 1
DATE: 04/11/11	4F 4056
REV. 2	

REV. DESCRIPTION & DATE