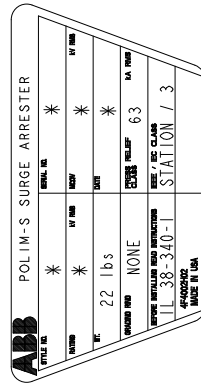


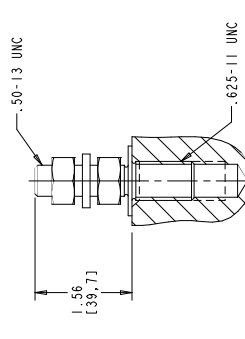
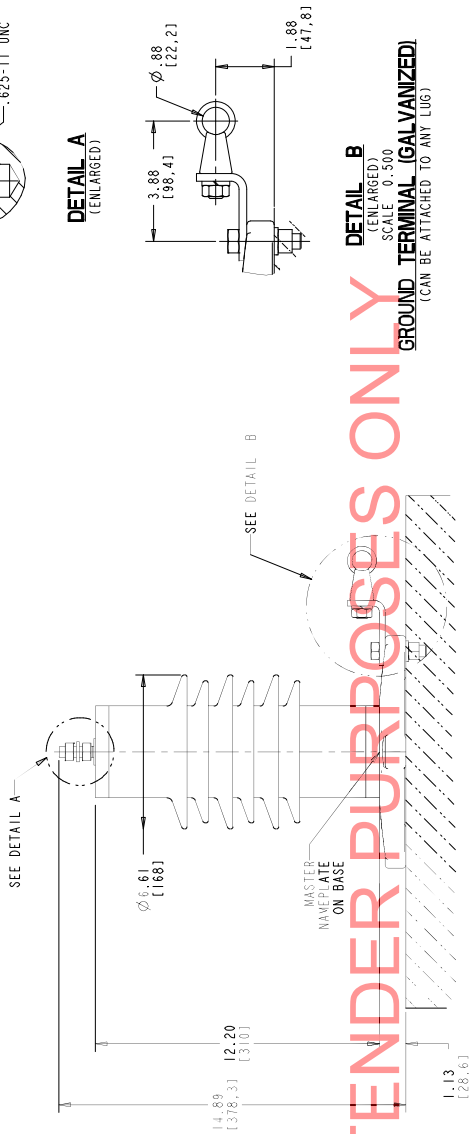
STYLE NO.	RATINGS (kV rms)		TOV (kV rms)	MAXIMUM RESIDUAL VOLTAGE WITH CURRENT WAVE (kV PEAK)				
	VOLTAGE V _r	MCOV V _{mco}		WITH PRIOR ENERGY SINGLE PULSE OF 4.5 kJ/MV	SPL (SIPL) 30/60 μS	LPL (LIPL) 8/20 μS	FW (FW) 0.5 μS	
				500 A	3 kA	10 kA	20 kA	10 kA
				STANDARD CREEP				
0012SA010ASAF1	12	10.2	10.0 sec = 13.1	25.1	28.1	30.0	33.5	33.1
0015SA012ASAF1	15	12.7	10.0 sec = 16.4	31.3	35.0	37.5	41.8	41.2
0018SA015ASAF1	18	15.3	10.0 sec = 19.7	37.4	41.9	45.0	50.0	49.3
0021SA017BSAF1	21	17.0	10.0 sec = 23.0	41.8	46.9	50.4	55.9	55.2
				EXTRA CREEP				
0003SB002ASAF1	3	2.55	10.0 sec = 4.93	9.77	10.9	11.3	12.9	12.8
0004SB003ASAF1	4	3.40	10.0 sec = 6.93	10.0	11.2	11.6	13.3	13.1
0005SB004ASAF1	5	4.25	10.0 sec = 8.93	12.3	13.7	14.4	16.3	16.1
0006SB005ASAF1	6	5.10	10.0 sec = 10.93	12.8	14.3	15.0	17.0	16.8
0007SB006ASAF1	7	5.95	10.0 sec = 12.93	17.7	19.8	21.0	23.6	23.3
0008SB007ASAF1	8	6.80	10.0 sec = 14.93	18.5	20.7	22.0	24.7	24.4
0009SB008ASAF1	9	7.65	10.0 sec = 16.93	19.0	21.3	22.6	25.4	25.0
0010SB009ASAF1	10	8.40	10.0 sec = 18.93	21.0	23.5	25.0	28.0	27.6



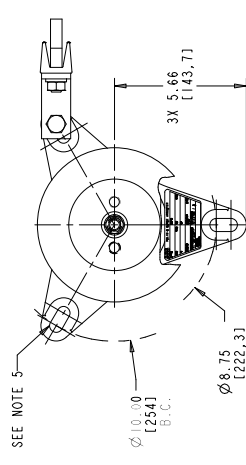
MASTER NAMEPLATE
 * ASSIGNED AT THE TIME OF PRODUCTION AND
 RECORDED IN THE PROPER LOCATIONS

FOR TENDER PURPOSES ONLY

DETAIL B
 (ENLARGED)
 SCALE: 0.500
GROUND TERMINAL (GALVANIZED)
 (CAN BE ATTACHED TO ANY LUG)



- NOTES:
- FOR MINIMUM PHASE-TO-GROUND AND PHASE-TO-PHASE CLEARANCES WITH TYPE POLIM-S SURGE ARRESTERS, REFER TO THE POLIM-S PRODUCT BULLETIN (26NM110077). OTHER APPARATUS STANDARDS, OTHER SPECIFICATIONS OR LOCAL CODES MAY SUPERCEDE DISTANCES SPECIFIED.
 - ARRESTER ASSEMBLY CONSISTS OF ARRESTER UNIT, LINE & GROUND TERMINALS WITH CLAMPS, AND 59 INCH HARDWARE.
 - THE GROUND TERMINALS (25 ACCORD TO IEC 60044-1) SHALL BE SIZED TO 1000 MCM (25 ACCORD TO IEC 60044-1) DIA. OR ROTATED 90° AS REQUIRED.
 - LINE & GROUND TERMINAL CLAMP CAN BE MOUNTED AS SHOWN OR SPACED FOR 50 INCH HARDWARE (3) EQUALLY.
 - SPACED, THICKNESS OF LUG = .88 (22.4)
 - DESIGNED FOR VERTICAL OR HORIZONTAL MOUNT.
 - MAX CANTILEVER LOAD 20,000 In-lbs (2260 Nm).
 - PRESSURE RELIEF CLASS IS 63 kA RMS SYMMETRICAL.
 - NOMINAL CREEPAGE DISTANCE 23.7 (601).
 - MAXIMUM ARRESTER WEIGHT 22.0 lbs (10.0 kg).



DRILLING PLAN

ALL DIMENSIONS IN INCHES (MM) UNLESS NOTED

THIS DRAWING IS THE PROPERTY OF ABB INC. IT IS TO BE USED FOR THE MANUFACTURE OF THE PRODUCT SPECIFIED HEREIN ONLY. NO PARTS OF THIS DRAWING ARE TO BE REPRODUCED OR TRANSMITTED IN ANY FORM OR BY ANY MEANS, ELECTRONIC OR MECHANICAL, INCLUDING PHOTOCOPYING, RECORDING, OR BY ANY INFORMATION STORAGE AND RETRIEVAL SYSTEM, WITHOUT THE WRITTEN PERMISSION OF ABB INC.

POLIM-S IEEE STATION / IEC CLASS 3	
POLYMER ARRESTER	
STUD/EYEBOLT TERMINAL (SAF1)	
6 SHED HOUSING OUTLINE	
ABB INC	
Power Products Division	
900 Distribution Circle, W. Pittsboro, PA 15066	
SCALE	AS SHOWN
DATE	08/08/2012
DESIGNER	DLK
CHECKER	DLK
APPR. BY	DLK
SHEET 1 OF 1	
4F4106	3

REV. DESCRIPTION & DATE

01 AUGUST 2, 2012

NOTE: 9: CREEPAGE 22.7

DRILLING PLAN RELOCATED

02 DECEMBER 16, 2013

NOTE: 9: 23.7 MAS 22.7

DLK

03 JULY 22, 2015