

STYLE NO.	RATINGS (kV rms)		TOV (kV rms)	MAXIMUM RESIDUAL VOLTAGE WITH CURRENT WAVE (kV PEAK)				
	VOLTAJE V _{mcov}	MCOV V _{mcov}		WITH PRIOR ENERGY SINGLE IMPULSE OF 4.5 kJ/V _r	SPL (SIPL) 30/60 μS	LPL (LIPL) 8/20 μS	FW (FW) 0.5 μS	FW (FW) 10 kA
				STANDARD CREEP				
00035A002ASZG1	3	2.55	0.0 sec = 4.93	9.77	10.9	11.3	12.9	12.8
00045A003ASZG1	4	3.40	0.0 sec = 4.93	11.2	11.6	13.3	13.1	
00055A004ASZG1	5	4.25	0.0 sec = 6.51	12.3	14.4	16.3	16.1	
00065A005ASZG1	6	5.10	0.0 sec = 6.51	12.8	14.3	15.0	17.0	16.8
00075A006ASZG1	7	5.95	0.0 sec = 9.86	17.7	19.8	21.0	23.6	23.3
00085A007ASZG1	8	6.80	0.0 sec = 9.86	18.5	20.7	22.0	24.7	24.4
00085A008BSZG1	9	7.65	0.0 sec = 9.86	19.0	21.3	22.6	25.4	25.0
00105A008BSZG1	10	8.40	0.0 sec = 11.0	21.0	23.5	25.0	28.0	27.6

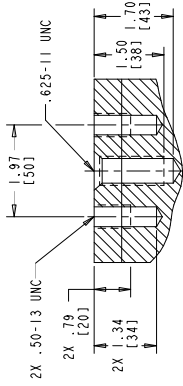
ABB POLIM-S SURGE ARRESTER			
TYPE NO.	00105A008BSZG1	REV. NO.	1
DATE	18 lbs	BY	BY
WEIGHT	NONE	DATE	DATE
GROUNDING	63	TESTED BY	63
REPAIR MATERIAL AND QUANTITY	DATE	REV. CLASS	DATE
ILL. 38-340-1	STATION / 3		
MADE IN USA			

MASTER NAMEPLATE
 * ASSIGNED AT THE TIME OF PRODUCTION AND RECORDED IN THE PROPER LOCATIONS

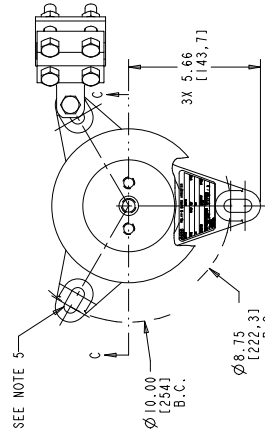
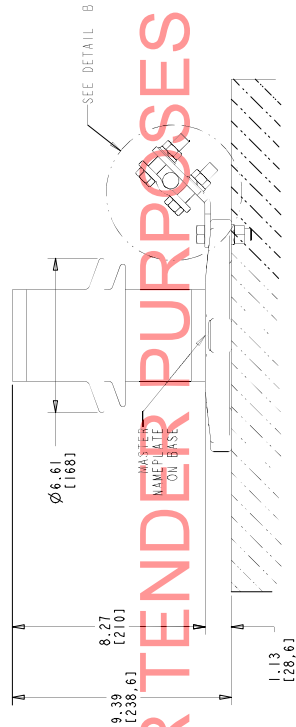
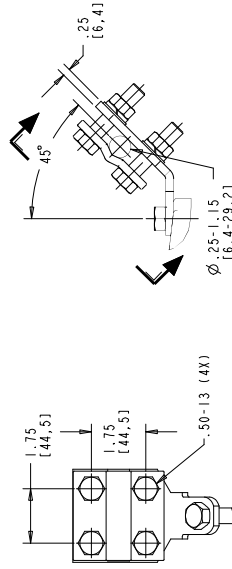
- NOTES:**
- FOR MINIMUM PHASE-TO-GROUND AND PHASE-TO-PHASE CLEARANCES WITH TYPE POLIM-S SURGE ARRESTERS, OTHER APPLICABLE STANDARDS, OTHER SPECIFIC CONDITIONS OR LOCAL CODES MAY SUPERSEDE DISTANCES SPECIFIED.
 - ARRESTER ASSEMBLY CONSISTS OF ARRESTER UNIT.
 - GROUND TERMINAL WITH CLAMP AND .50 INCH HARDWARE.
 - SIZE NO. 2 TO 1000 MCM (1.25 [6.4] TO 1.15 [29.2]) DIA.
 - GROUND TERMINAL CLAMP CAN BE MOUNTED AS SHOWN OR ROTATED 90° AS REQUIRED.
 - MTG. SLOTS FOR .50 INCH HARDWARE (3) EQUALLY SPACED; THICKNESS OF LUG = .88 [22.4].
 - DESIGNED FOR VERTICAL OR HORIZONTAL MOUNT.
 - USE SIGNATURE FOR IDENTIFICATION OF THE UNIT.
 - PRESSURE RELIEF CLASS 1, 63 kVA RMS SYMMETRICAL.
 - NOMINAL CREEPAGE DISTANCE 11.3 [287].
 - MAXIMUM ARRESTER WEIGHT 18.0 lbs [8.2 kg].

FOR TENDER PURPOSES ONLY

DETAIL B
 (ENLARGED)
 SCALE: 0.500
GROUND TERMINAL (GALVANIZED)
 (CAN BE ATTACHED TO ANY LUG)



SECTION C-C
(ENLARGED)



DRILLING PLAN

ALL DIMENSIONS IN INCHES [MM] UNLESS NOTED
 THE DRAWING IS THE PROPERTY OF ABB INC. AND IS NOT TO BE REPRODUCED OR TRANSMITTED IN ANY FORM OR BY ANY MEANS, ELECTRONIC OR MECHANICAL, INCLUDING PHOTOCOPYING, RECORDING, OR BY ANY INFORMATION STORAGE AND RETRIEVAL SYSTEM, WITHOUT THE WRITTEN PERMISSION OF ABB INC.

POLIM-S IEEE STATION / IEC CLASS 3
 POLYMER ARRESTER
 W/O LINE TERMINAL (SZG1)
 2 SHED HOUSING OUTLINE

ABB INC. Power Products Division 500 Distribution Circle, Ft. Pittsburg, PA 15065	
SCALE: 0.500	SHEET 1 OF 1
DATE: 04/12/2015	4F 4112
DESIGNER: DDK	4
CHECKER: DDK	4

01	AUGUST 30, 2012	SECTION C-C ADDED	DDK
02	JANUARY 3, 2013	NOTE 9 CREEPAGE 11.0	DDK
03	DECEMBER 16, 2013	DRILLING PLAN RELOCATED	DDK
04	JULY 22, 2015	NOTE 9: 11.3 WAS 11.0	DDK