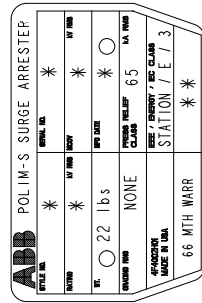
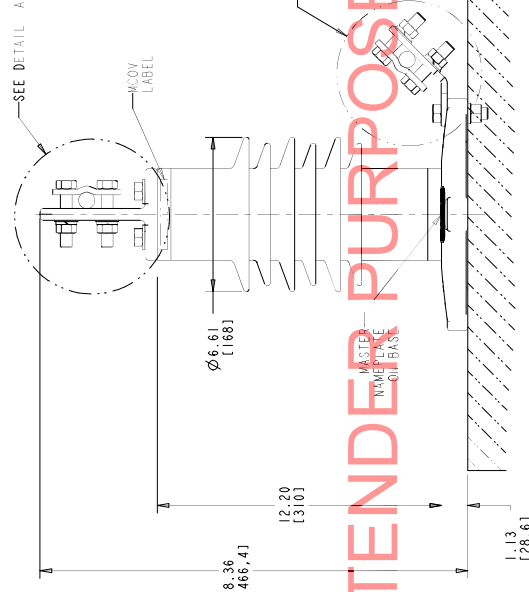
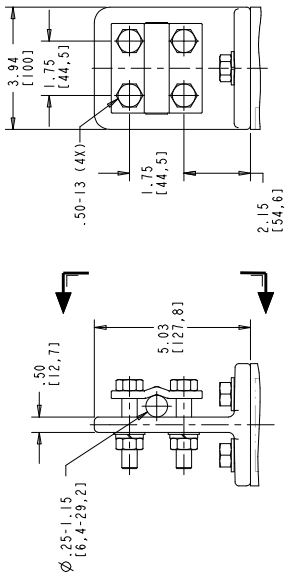


STYLE NO.	RATINGS (kV rms)		TOV (kV rms)	MAXIMUM RESIDUAL VOLTAGE WITH CURRENT WAVE (kV PEAK)				CID	MCOV LABEL COLOR
	V _r	MCOV		WITH PRIOR ENERGY SINGLE IMPULSE OF 4.5 kJ/kV	SPL (SIPL)	LPL (LIPL)	FW		
0010S0088AEP	10	8.40	11.0	500 A	3 kA	10 kA	20 kA	10 kA	RED
001ZSA010AAEP	12	10.2	13.1	21.0	23.5	25.0	28.0	27.6	0710054769
001SSA012AAEP	15	12.7	16.4	25.1	28.1	30.0	33.3	33.1	0710054771
				31.3	35.0	37.5	41.8	41.2	0710054773
									BLUE

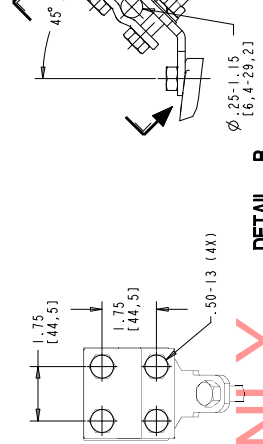


MASTER NAMEPLATE (SSTL)
 * ASSIGNED AT THE TIME OF PRODUCTION AND RECORDED IN THE PROPER LOCATIONS
 ** CID NUMBER

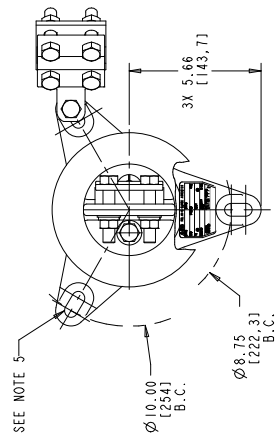
- NOTES:
- FOR MINIMUM PHASE-TO-GROUND AND PHASE-TO-PHASE CLEARANCES WITH TYPE POLIM-S SURGE ARRESTERS REFER TO THE POLIM-S PRODUCT BULLETIN (Z6NM110077). OTHER APPARATUS STANDARDS, OTHER SPECIFICATIONS OR LOCAL CODES MAY SUPERCEDE DISTANCES SPECIFIED.
 - ARRESTER ASSEMBLY CONSISTS OF ARRESTER UNIT, LINE & GROUND TERMINALS WITH CLAMPS, AND .50 INCH HARDWARE.
 - LINE & GROUND TERMINALS CAN ACCOMMODATE CU OR AL CABLE. LINE AND GROUND TERMINAL CLAMP CAN BE MOUNTED AS SHOWN, OR ROTATED 90° AS REQUIRED.
 - MIG SLOTS FOR .50 INCH HARDWARE (3) EQUALLY SPACED. THICKNESS OF LUG = .88 (22.4)
 - DESIGNED FOR VERTICAL OR HORIZONTAL MOUNT.
 - MAX CANTILEVER LOAD 20,000 in-lbs (2260 Nm).
 - PRESSURE RELIEF CLASS IS 65 kA RMS SYMMETRICAL.
 - NOMINAL CREEPAGE DISTANCE 23.7 (601).
 - MAXIMUM ARRESTER WEIGHT 22.0 lbs (10.0 kg).
 - UPRIGHT / UNDERHUNG MOUNT MAY BE CHANGED BY SWAPPING THE BASE AND TERMINAL.



DETAIL A
(ENLARGED)
SCALE 0.500
LINE TERMINAL (ALUMINUM)



DETAIL B
(ENLARGED)
SCALE 0.500
GROUND TERMINAL (GALVANIZED)
(CAN BE ATTACHED TO ANY LUG)



DRILLING PLAN

ALL DIMENSIONS IN INCHES (MM) UNLESS NOTED

THIS DRAWING IS THE PROPERTY OF ABB INC. IT IS TO BE USED FOR THE MANUFACTURE OF THE PRODUCT SPECIFIED HEREIN ONLY. ANY REPRODUCTION OR USE OF THIS DRAWING FOR ANY OTHER PURPOSE WITHOUT THE WRITTEN PERMISSION OF ABB INC. IS STRICTLY PROHIBITED.

POLIM-S IEEE STATION / ENERGY CLASS E	
POLYMER ARRESTER	
6 SHED HOUSING OUTLINE (AEP)	
ABB INC Power Products Division 900 Distribution Circle, Ft. Peck, PA 15045	
DATE: 08/04/16	SCALE: 1:1
DESIGNER: J. J. WILSON	CHECKER: J. J. WILSON
APP: J. J. WILSON	DATE: 08/04/16
SHEET 1 OF 1	4F 4163
1	1