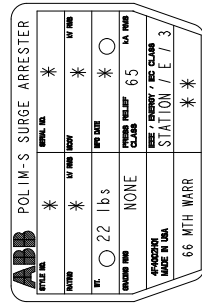


STYLE NO.	RATINGS (kV rms)		MAXIMUM RESIDUAL VOLTAGE WITH CURRENT WAVE (kV PEAK)				CID	MCOV LABEL COLOR	
	VOLTAGE V _r	MCOV V _{mco}	WITH PRIOR ENERGY SINGLE IMPULSE OF 4.5 kJ/AV	SPL (SIPL) 30/60 μS	LPL (LIPL) 8/20 μS	FW (FO) 0.5 μS			
0010SBO080UHAEP	10	8.40	11.0	500 A	3 kA	10 kA	20 kA	10 kA	RED
001ZSA010AHAEF	12	10.2	13.1	21.0	23.5	25.0	28.0	27.6	GREEN
001SSA012AHAEF	15	12.7	16.4	25.1	28.1	30.0	33.5	33.1	GREEN
				31.3	35.0	37.5	41.8	41.2	BLUE



* ASSIGNED AT THE TIME OF PRODUCTION AND RECORDED IN THE PROPER LOCATIONS
 ** CID NUMBER

- NOTES:
- FOR MINIMUM PHASE-TO-GROUND AND PHASE-TO-PHASE CLEARANCES WITH TYPE POLIM-S SURGE ARRESTERS, REFER TO THE POLIM-S PRODUCT BULLETIN (26NMI0077). OTHER APPARATUS STANDARDS, OTHER SPECIFICATIONS OR LOCAL CODES MAY SUPERSEDE DISTANCES SPECIFIED.
 - ARRESTER ASSEMBLY CONSISTS OF ARRESTER UNIT, LINE & GROUND TERMINALS WITH CLAMPS AND 5/8 INCH HARDWARE.
 - LINE & GROUND TERMINALS CANNOT BE MOUNTED ON CABLE SIZE NO.2 TO 1000 MCM (25 TO 250 CM²) OR CABLE SIZE NO.2 TO 1000 MCM (25 TO 250 CM²).
 - LINE & GROUND TERMINAL CLAMP CAN BE MOUNTED AS SHOWN OR ROTATED 90° AS REQUIRED.
 - MTG. SLOTS FOR .50 INCH HARDWARE (3) EQUALLY SPACED, THICKNESS OF LUG = .88 (22.4)
 - DESIGNED FOR VERTICAL OR HORIZONTAL MOUNT.
 - MAX CANTILEVER LOAD 20,000 in-lbs (2260 Nm).
 - PRESSURE RELIEF CLASS IS 65 KA RMS SYMMETRICAL.
 - NOMINAL CREEPAGE DISTANCE 23.7 (601.1)
 - MAXIMUM ARRESTER WEIGHT MAY BE CHANGED BY 11% WITHIN TOLERANCE.
 - SWAPPING THE BASE AND TERMINAL.

FOR TENDER PURPOSES ONLY

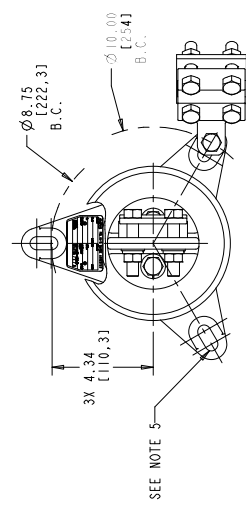
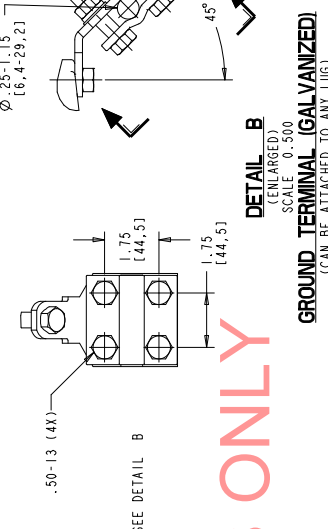
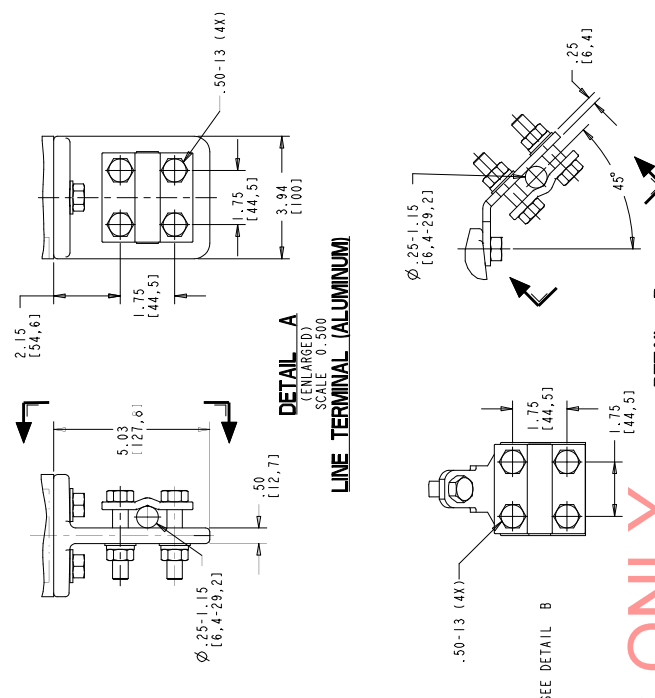


ABB ITC
Power Products Division
900 Distribution Circle, Ft. Peck, PA 15045

SCALE: AS SHOWN
SHEET 1 OF 1
4F 4164 1

ALL DIMENSIONS IN INCHES (MM) UNLESS NOTED
 The drawings are the property of ABB. No part of this drawing may be reproduced or transmitted in any form or by any means, electronic, mechanical, photocopying, recording, or by any information storage and retrieval system, without permission in writing from ABB Inc.
 Use of this drawing shall be restricted to the project for which it was prepared.

POLIM-S IEEE STATION / ENERGY CLASS E
POLYMER ARRESTER (UNDERMOUNT)
6-SHED HOUSING OUTLINE (AEP)

REV. DESCRIPTION & DATE
 01 APRIL 30, 2016