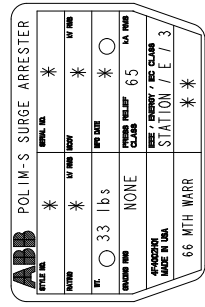
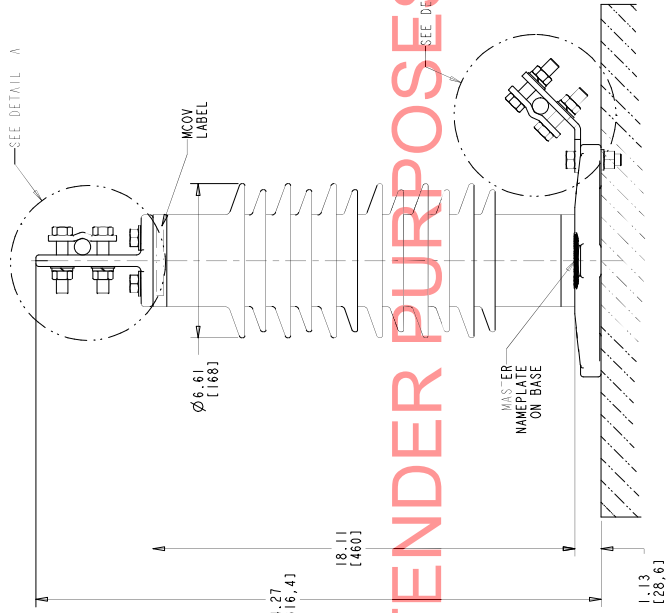
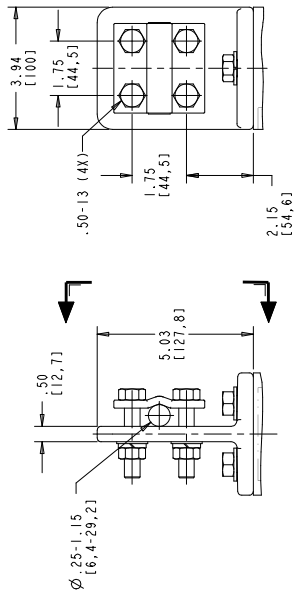


STYLE NO.	RATINGS (kV rms)		TOV (kV rms)	MAXIMUM RESIDUAL VOLTAGE WITH CURRENT WAVE (kV PEAK)				C/D	MCOV LABEL
	VOLTAGE V _r	MCOV V _{mco}		WITH PRIOR ENERGY SPL (SIPL)	LPL (LIPL)	FW	FW		
0018S015HAEP	18	15.3	19.7	500 A	3 kA	10 kA	20 kA	10 kA	RED
0003S040Z4HAEP	30	24.4	32.9	59.5	66.7	72.0	79.7	78.6	0710054775 GREEN

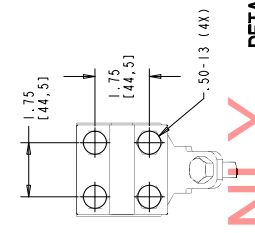


MASTER NAMEPLATE (SSTL)
 * ASSIGNED AT THE TIME OF PRODUCTION AND RECORDED IN THE PROPER LOCATIONS
 ** C/D NUMBER

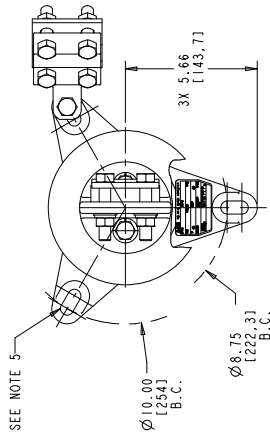
- NOTES:**
- FOR MINIMUM PHASE-TO-GROUND AND PHASE-TO-PHASE CLEARANCES WITH TYPE POLIM-S SURGE ARRESTERS, REFER TO THE POLIM-S PRODUCT BULLETIN (26NM110077). OTHER APPARATUS STANDARDS, OTHER SPECIFICATIONS OR LOCAL CODES MAY SUPERCEDE DISTANCES SPECIFIED.
 - ARRESTER ASSEMBLY CONSISTS OF ARRESTER UNIT, LINE & GROUND TERMINALS WITH CLAMPS, AND .50 INCH HARDWARE.
 - LINE & GROUND TERMINALS CAN ACCOMMODATE CU OR AL CABLE SIZE NO. 2 TO NO. 1000 ACM (.25 IN. TO 1.15 IN. [29.27] DIA.) OR ROTATED 90° AS REQUIRED. CLAMP CAN BE MOUNTED AS SHOWN.
 - WTG. SLOTS FOR .50 INCH HARDWARE (3) EQUALLY SPACED. THICKNESS OF LUG = .88 [22.4].
 - DESIGNED FOR VERTICAL OR HORIZONTAL MOUNT.
 - MAX CANTILEVER LOAD 20,000 in-lbs [2260 Nm].
 - PRESSURE RELIEF CLASS IS 65 kA RMS SYMMETRICAL.
 - NOMINAL CREEPAGE DISTANCE 42.2 [1073].
 - MAXIMUM ARRESTER WEIGHT 33.0 lbs [15.0 kg].
 - UPRIGHT / UNDERHUNG MOUNT MAY BE CHANGED BY SWAPPING THE BASE AND TERMINAL.



DETAIL A
(ENLARGED)
SCALE: 0-500
LINE TERMINAL (ALUMINUM)



DETAIL B
(ENLARGED)
SCALE: 0-500
GROUND TERMINAL (GALVANIZED)
(CAN BE ATTACHED TO ANY LUG)



DRILLING PLAN

ALL DIMENSIONS IN INCHES (MM) UNLESS NOTED
 THE POLIM-S SURGE ARRESTER IS A TRADEMARK OF ABB INC.
 USE OF POLIM-S SURGE ARRESTER HAS BEEN AUTHORIZED BY ABB INC.

POLIM-S IEEE STATION / ENERGY CLASS E POLYMER-ARRESTER 12 SHEET HOUSING OUTLINE (AEP)	
ABB INC. Power Products Division 500 Distribution Circle, Ft. Pittsburg, PA 15066	
SCALE: 0-500	SHEET 1 OF 1
DATE: 04/30/16	4F4165
REV: 1	1