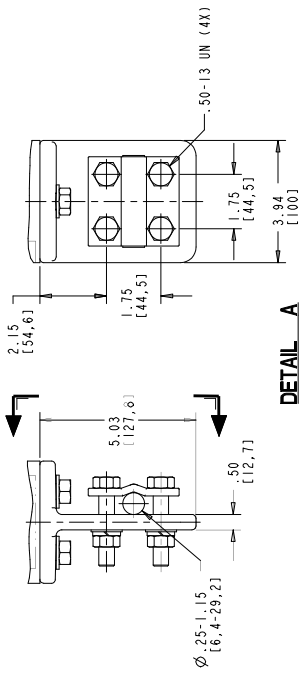
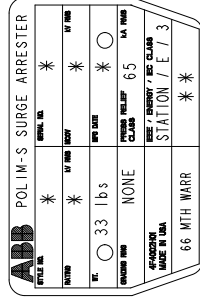
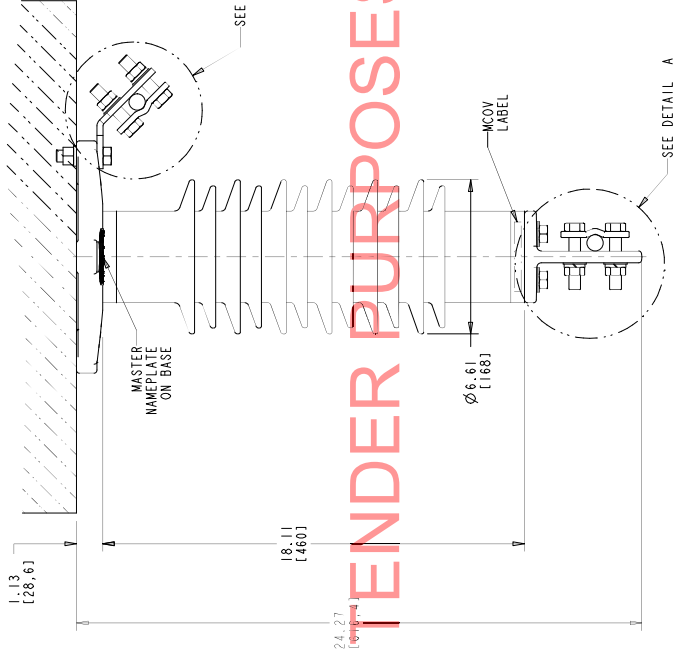


STYLE NO.	RATINGS (kV rms)		MAXIMUM RESIDUAL VOLTAGE WITH CURRENT WAVE (kV PEAK)				CID	MCOV LABEL	
	VOLTAJE Vr	Vmcoy	WITH PRIOR ENERGY SINGLE IMPULSE OF	SPL (SIPL)	LPL (LIPL)	FOR			
00185B015AHNAEP	18	15.3	37.4	500 A	3 kA	10 kA	20 kA	10 kA	RED
00303A024AHNAEP	30	24.4	41.9	59.5	41.9	45.0	50.0	49.3	GREEN



**DETAIL A**  
(ENLARGED)  
SCALE 0.500

LINE TERMINAL (ALUMINUM)

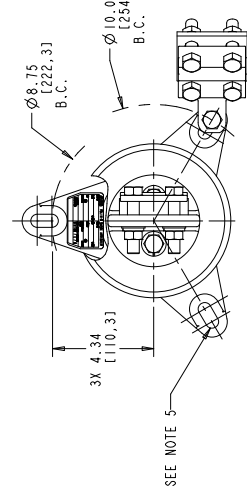


**MASTER NAMEPLATE (SSTL)**

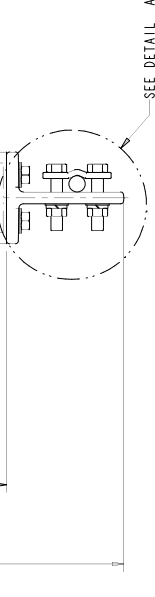
- \* ASSIGNED AT THE TIME OF PRODUCTION AND RECORDED IN THE PROPER LOCATIONS
- \*\* CID NUMBER

FOR TENDER PURPOSES ONLY

**DETAIL B**  
(ENLARGED)  
SCALE 0.500  
GROUND TERMINAL (GALVANIZED)  
(CAN BE ATTACHED TO ANY LUG)



**DRILLING PLAN**



ALL DIMENSIONS IN INCHES [MM] UNLESS NOTED			
POLIM-S IEEE STATION / ENERGY CLASS E POLYMER ARRESTER (UNDERHUNG) 1/2 SHED HOODING OUTLINE (REP)			
ABB INC. Power Products Division 200 Distribution Circle, Ft. Pittsburg, PA 15046			
DESIGN	REV	DATE	BY
SCALE: 4:1			4F 4166
SHEET 1 OF 1			1

REV. DESCRIPTION & DATE

- NOTES:
- FOR MINIMUM PHASE-TO-GROUND AND PHASE-TO-PHASE CLEARANCES WITH TYPE POLIM-S SURGE ARRESTERS. REFER TO THE POLIM-S PRODUCT BULLETIN (26NM100777). OTHER APPARATUS STANDARDS, OTHER SPECIFICATIONS OR LOCAL CODES MAY SUPERCEDE DISTANCES SPECIFIED.
  - ARRESTER ASSEMBLY CONSISTS OF ARRESTER UNIT, LINE & GROUND TERMINALS WITH CLAMPS, AND .50 INCH HARDWARE.
  - LINE & GROUND TERMINALS CAN ACCOMMODATE CU OR AL CABLE.
  - LINE & GROUND TERMINAL CLAMP CAN BE MOUNTED AS SHOWN OR ROTATED 90° AS REQUIRED.
  - DR-ROTTED 90° AS REQUIRED.
  - SPACED. THICKNESS OF LUG = .88 [22.4].
  - DESIGNED FOR VERTICAL OR HORIZONTAL MOUNT.
  - MAX CANTILEVER LOAD 20,000 in.-lbs [2260 Nm].
  - PRESSURE RELIEF CLASS IS 65 kA RMS SYMMETRICAL.
  - NOMINAL CREEPAGE DISTANCE 42.2 [1073].
  - NOMINAL ARRESTER WEIGHT 33.0 lbs [15.0 kg].
  - UPRIGHT / UNDERHUNG MOUNT MAY BE CHANGED BY SWAPPING THE BASE AND TERMINAL.