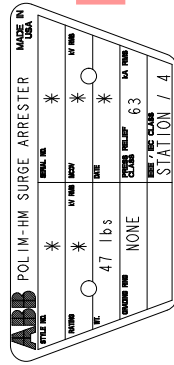


STYLE NO.	RATINGS (kV rms)		TOV (kV rms)	MAXIMUM RESIDUAL VOLTAGE WITH CURRENT WAVE (kV PEAK)				
	VOLTAGE V _r	MCOV V _{mcoV}		WITH PRIOR ENERGY SINGLE IMPULSE OF 30/60 μS	SPL (SIPL) LPL (LIPL) 8/20 μS	FW 0.5 μS		
				500 A	3 kA	10 kA	20 kA	10 kA
				STANDARD CREEP				
P04HV003A	4.5	3.80	Ø10 sec ± 5.12	9.18	10.1	10.4	11.9	11.6
P06HV005A	6.0	5.10	Ø10 sec ± 6.83	12.0	13.2	13.8	15.7	15.3
P09HV008A	9.0	7.65	Ø10 sec ± 10.2	17.8	19.5	20.7	23.2	22.6
P10HV008A	10	8.40	Ø10 sec ± 11.4	20.7	22.8	24.2	27.1	26.4
P12HV010A	12	10.2	Ø10 sec ± 13.7	23.5	25.9	27.6	30.8	30.0
P15HV012A	15	12.7	Ø10 sec ± 17.1	29.3	32.2	34.5	38.4	37.4
P18HV015A	18	15.3	Ø10 sec ± 20.5	35.1	38.6	41.4	46.0	44.8
P21HV017A	21	17.0	Ø10 sec ± 23.9	40.8	44.9	48.3	53.5	52.2
P24HV019A	24	19.5	Ø10 sec ± 27.3	46.6	51.3	55.2	61.1	59.6
P27HV021A	27	22.0	Ø10 sec ± 30.7	52.4	57.6	62.1	68.7	66.9
P30HV024A	30	24.4	Ø10 sec ± 34.1	58.1	64.0	69.0	76.3	74.3
P33HV027A	33	27.0	Ø10 sec ± 37.6	63.9	70.3	75.9	83.8	81.7
P36HV029A	36	29.0	Ø10 sec ± 41.0	69.6	76.7	82.8	91.4	89.1
P39HV031A	39	31.5	Ø10 sec ± 44.4	75.4	83.0	89.7	99.0	96.5
P42HV034A	42	34.0	Ø10 sec ± 47.8	81.2	89.4	96.6	107	104

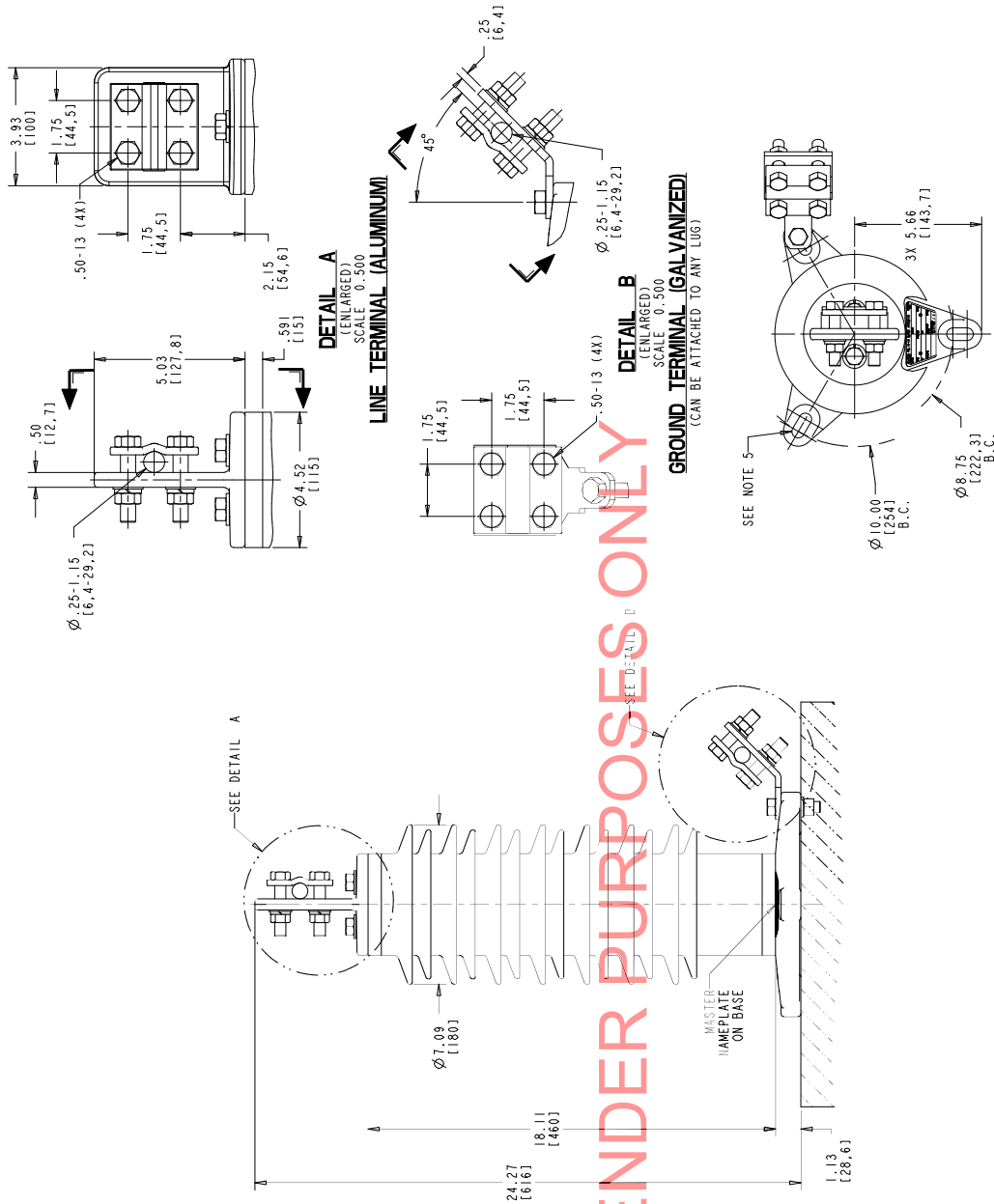


MASTER NAMEPLATE (SSTL)

* ASSIGNED AT THE TIME OF PRODUCTION AND RECORDED IN THE PROPER LOCATIONS

- NOTES:
- FOR MINIMUM PHASE-TO-GROUND AND PHASE-TO-PHASE CLEARANCES WITH TYPE POLIM-HM SURGE ARRESTERS REFER TO THE POLIM-HM PRODUCT BULLETIN (26NM10065). OTHER APPARATUS STANDARDS, OTHER SPECIFICATIONS OR LOCAL CODES MAY SUPERCEDE DISTANCES SPECIFIED.
 - ARRESTER ASSEMBLY CONSISTS OF ARRESTER UNIT, LINE & GROUND TERMINALS WITH CLAMPS, AND .50 INCH HARDWARE.
 - LINE & GROUND TERMINALS CAN ACCOMMODATE CU OR AL CABLE. LINE & GROUND TERMINAL CLAMP CAN BE MOUNTED AS SHOWN.
 - OR ROTATED 90° AS REQUIRED.
 - MTG. SLOTS FOR .50 INCH HARDWARE (3) EQUALLY SPACED. THICKNESS OF LUG = .88 [22.4]
 - DESIGNED FOR VERTICAL OR HORIZONTAL MOUNT.
 - MAX CANTILEVER LOAD 20,000 in-lbs [2260 Nm].
 - PRESSURE RELIEF CLASS IS 63 KA RMS SYMMETRICAL.
 - NOMINAL CREEPAGE DISTANCE 45.2 [1149].
 - MAXIMUM ARRESTER WEIGHT 47 lbs [21.3 kg].

FOR TENDER PURPOSES ONLY



DRILLING PLAN

ALL DIMENSIONS IN INCHES [MM] UNLESS NOTED

ABB INC.
Power Products Division
500 Distribution Circle, Ft. Pittsburg, PA 15066

POLIM-HM IEEE STATION / IEC CLASS 4
POLYMER ARRESTER
14 SHED HOUSING OUTLINE

SCALE: AS SHOWN
SHEET 1 OF 1
4F5510
4