

STYLE NO.	RATINGS		TOV		MAXIMUM RESIDUAL VOLTAGE WITH CURRENT WAVE (kV PEAK)				
	VOLTAGE V _r	MCOV V _{mco}	(kV rms)	WITH PRIOR ENERGY SINGLE IMPULSE OF 5.6 kJ/kVmsov	SPL (S1PL) 30/60 μS	LPL (L1PL) 8/20 kA, 20 kA, 10 kA	FW 0.5 μS		
0033NA027A	33	27.0	010 sec ± 36.1	65.4	73.4	79.2	87.6	86.4	
0036NA029A	36	29.0	010 sec ± 39.4	71.3	80.0	86.4	95.5	94.2	
0039NA031A	39	31.5	010 sec ± 42.7	77.3	86.6	93.6	103	102	
0042NA034A	42	34.0	010 sec ± 46.0	83.3	93.4	101	112	110	
0045NA037A	45	36.5	010 sec ± 49.3	89.1	99.9	108	119	118	
0048NA039A	48	39.0	010 sec ± 52.6	95.6	107	116	128	126	
0051NA042A	51	42.0	010 sec ± 55.9	102	114	120	130	128	
0054NA044A	54	44.0	010 sec ± 60.2	109	122	132	146	144	
0060NA048A	60	48.0	010 sec ± 65.7	119	133	144	159	157	
EXTRA CREEP									
0012NB010A	12	10.2	010 sec ± 13.1	25.1	28.1	30.0	33.5	33.1	
0015NB012A	15	12.7	010 sec ± 16.4	31.3	35.0	37.5	41.8	41.2	
0018NB015A	18	15.3	010 sec ± 19.7	37.4	41.9	45.0	50.0	49.3	
0021NB017A	21	17.0	010 sec ± 23.0	41.8	46.9	50.4	55.9	55.2	
0024NB019A	24	19.5	010 sec ± 26.3	47.7	53.5	57.6	63.9	63.0	
0027NB022A	27	22.0	010 sec ± 29.6	53.6	60.1	64.8	71.8	70.8	
0030NB024A	30	24.4	010 sec ± 32.9	59.5	66.7	72.0	79.7	78.6	

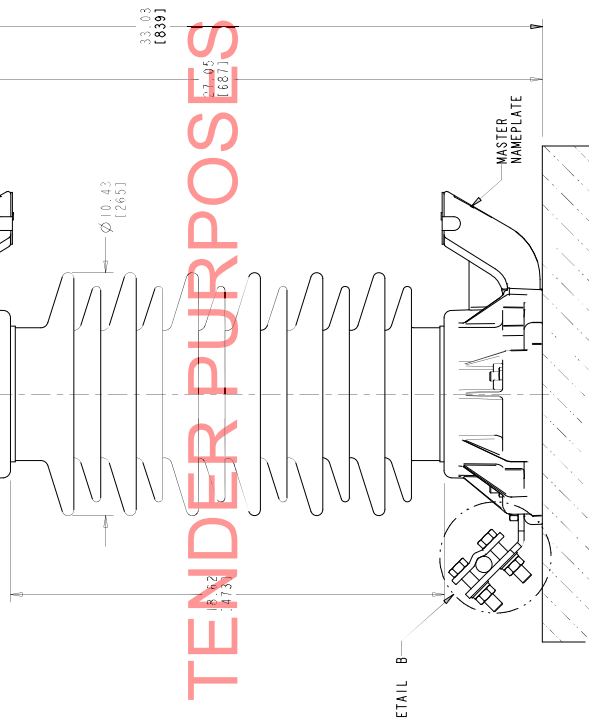


ABB EXLIM SURGE ARRESTER MADE IN USA

STYLE NO. * RATING * IV

SERIAL NO. * MCOV * IV

IEEE CLASS STATION / 3 PRESSURE CLASS 65 kV

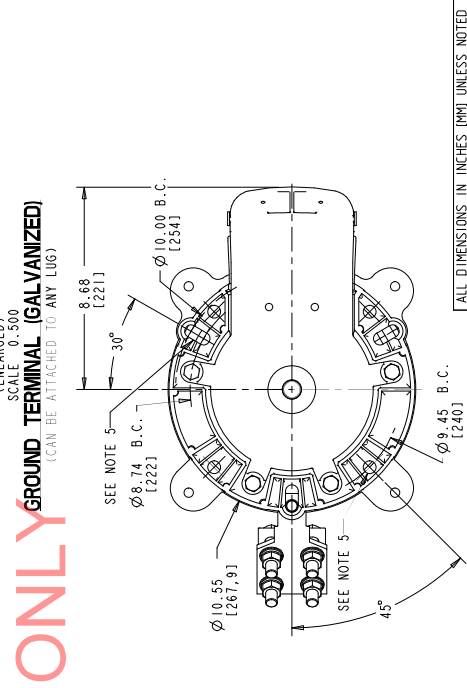
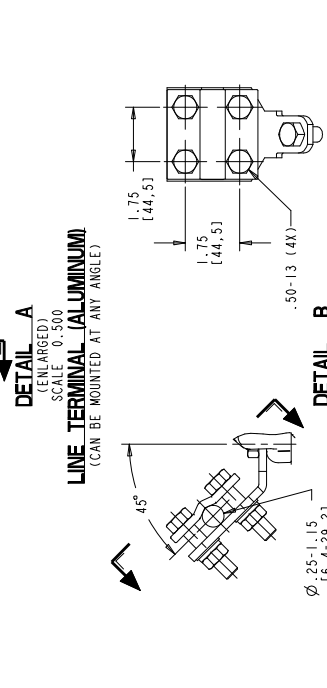
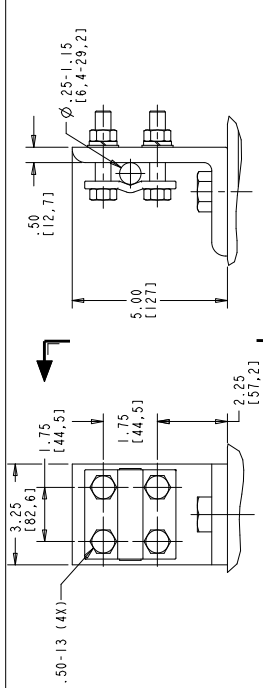
DATE * WT 106 lbs FINISH

MASTER NAMEPLATE (SSTL)

* ASSIGNED AT THE TIME OF PRODUCTION AND RECORDED IN THE PROPER LOCATIONS

- NOTES:
- FOR MINIMUM PHASE-TO-GROUND AND PHASE-TO-PHASE CLEARANCES WITH TYPE EXLIM SURGE ARRESTERS REFER TO THE EXLIM PRODUCT BULLETIN (26NM10005). OTHER APPARATUS STANDARDS, OTHER SPECIFICATIONS OR LOCAL CODES MAY SUPERCEDE DISTANCES SPECIFIED.
 - ARRESTER ASSEMBLY CONSISTS OF ARRESTER UNIT, LINE & GROUND TERMINALS WITH GALVANIZED CLAMPS, AND .50 INCH HARDWARE.
 - LINE & GROUND TERMINALS CAN ACCOMMODATE CU OR AL CABLE. SIZE NO. 2 TO 1000 MCM (1.25-16.4) TO 1.15 (29.23) DIA.
 - LINE & GROUND TERMINAL CLAMP CAN BE MOUNTED AS SHOWN.
 - ONE HOLES AND SLOTS FOR 500 INCH HARDWARE.
 - THICKNESS OF LUGS = .79 (20.1)
 - DESIGNED FOR VERTICAL MOUNT.
 - MAX CANTILEVER LOAD 66,380 in-lbs (7500 Nm).
 - PRESSURE RELIEF CLASS IS 65 kV RMS SYMMETRICAL.
 - NOMINAL CREEPAGE DISTANCE 63.6 (1615).
 - MAXIMUM ARRESTER WEIGHT 106 lbs (48 kg).

01	SEPTEMBER 12, 2011	ADD FOM AS WAS DSK
02	JANUARY 14, 2012	ADDED STYLE 0033NA027A DSK
03	FEBRUARY 7, 2014	STYLES 0012NB010A, 0015NB012A, 0018NB015A AND 0021NB017A ADDED DSK
04	JUNE 10, 2015	



ALL DIMENSIONS IN INCHES [MM] UNLESS NOTED

ABB INC. 500 Distribution Circle, Ft. Pittsburg, PA 15066

EXLIM-Q IEEE STATION / IEC CLASS 3 GREY PORCELAIN ARRESTER 1/2 SHED HOUSING OUTLINE

ABB INC. 500 Distribution Circle, Ft. Pittsburg, PA 15066

SCALE: AS SHOWN

DATE: 04/10/15

DESIGNER: J. J. JONES

CHECKER: J. J. JONES

APP: J. J. JONES

SHEET 1 OF 1

4F7301

4

FOR TENDER PURPOSES ONLY GROUND TERMINAL (GALVANIZED)

(CAN BE ATTACHED TO ANY LUG)