

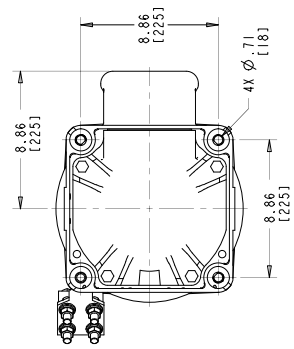
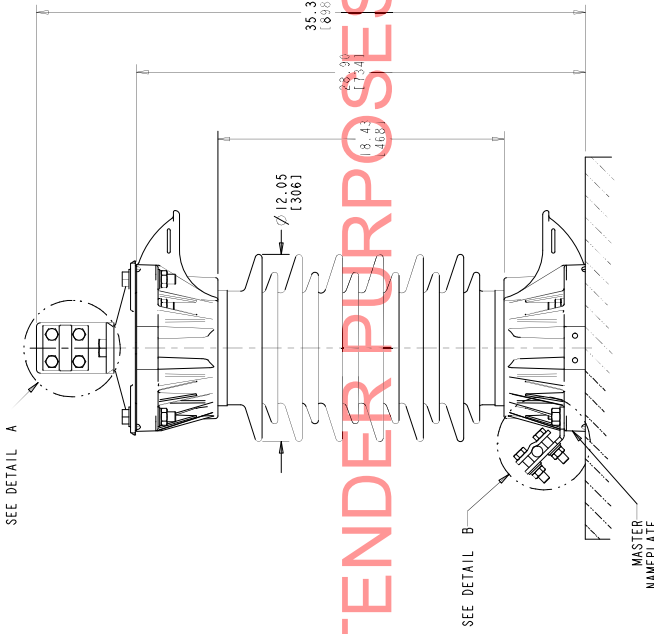
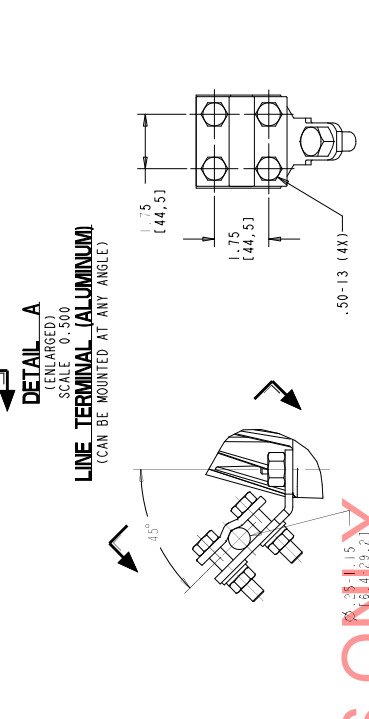
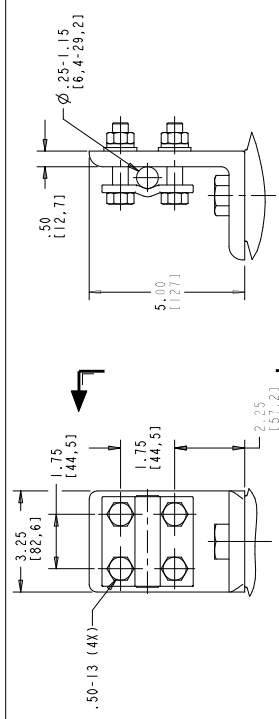
STYLE NO.	RATINGS		TOV (kV rms)	MAXIMUM RESIDUAL VOLTAGE WITH CURRENT WAVE (kV PEAK)				
	VOLTAGE V <sub>r</sub>	MCOV V <sub>mco</sub>		WITH PRIOR ENERGY SINGLE PULSE OF 8.8 kJ/kVco	SPL (SIPL) 30/60 μS	LPL (LIPL) 8/20 μS	FW 0.5 μS	
				STANDARD CREEP				
P036A002A	3	2.55	Ø10 sec = 5.12	9.18	10.1	10.4	11.9	11.6
P046A003A	4	3.40	Ø10 sec = 5.12	9.18	10.1	10.4	11.9	11.6
P056A004A	5	4.25	Ø10 sec = 6.83	12.0	13.2	13.8	15.7	15.3
P066A005A	6	5.10	Ø10 sec = 6.83	12.0	13.2	13.8	15.7	15.3
P086A007A	8	6.80	Ø10 sec = 10.2	17.8	19.5	20.7	23.2	22.6
P096A008A	9	7.65	Ø10 sec = 10.2	17.8	19.5	20.7	23.2	22.6
P106A009A	10	8.40	Ø10 sec = 11.4	20.7	22.8	24.2	27.1	26.4
P126A010A	12	10.2	Ø10 sec = 13.7	23.5	25.9	27.6	30.8	30.0
P156A012A	15	12.7	Ø10 sec = 17.1	29.3	32.2	34.5	38.4	37.4
P186A015A	18	15.3	Ø10 sec = 20.5	35.1	38.6	41.4	46.0	44.8
P216A017A	21	17.0	Ø10 sec = 23.9	40.8	44.9	48.3	53.5	52.2
P246A019A	24	19.5	Ø10 sec = 27.3	46.6	51.3	55.2	61.1	59.6
P276A022A	27	22.0	Ø10 sec = 30.7	52.4	57.6	62.1	68.7	66.9
P306A024A	30	24.4	Ø10 sec = 34.1	58.1	64.0	69.0	76.3	74.3
P336A027A	33	27.0	Ø10 sec = 37.6	64.0	70.4	76.0	83.9	81.8
P366A029A	36	29.0	Ø10 sec = 41.0	69.0	75.9	82.0	90.5	88.2
P396A031A	39	31.5	Ø10 sec = 44.4	74.8	82.4	89.0	98.2	95.7
P426A034A	42	34.0	Ø10 sec = 47.8	80.7	88.8	96.0	106	103
P456A037A	45	36.5	Ø10 sec = 51.2	86.5	95.3	103	114	111
P486A039A	48	39.0	Ø10 sec = 54.6	92.4	102	110	121	118

ABB EXLIM SURGE ARRESTER		MADE IN USA	
STYLE NO.	*	RATING	* kV
SERIAL NO.	*	MCOV	* kV
IEEE/IEC CLASS	STATION / 4	PRESSURE RELIEF CLASS	65 / A
DATE	*	W 198 lbs	MM

**MASTER NAMEPLATE (SSTL)**  
 \* ASSIGNED AT THE TIME OF PRODUCTION AND RECORDED IN THE PROPER LOCATIONS

- NOTES:
- FOR MINIMUM PHASE-TO-GROUND AND PHASE-TO-PHASE CLEARANCES WITH TYPE EXLIM SURGE ARRESTERS. REFER TO THE EXLIM PRODUCT BULLETIN (Z69M100009). OTHER APPARATUS STANDARDS, OTHER SPECIFICATIONS OR LOCAL CODES MAY SUPERCEDE DISTANCES SPECIFIED.
  - ARRESTER ASSEMBLY CONSISTS OF ARRESTER UNIT, LINE & GROUND TERMINALS WITH GALVANIZED CLAMPS, AND .50 INCH HARDWARE.
  - LINE & GROUND TERMINALS CAN ACCOMMODATE CU OR AL CABLE.
  - LINE & GROUND TERMINAL CLAMP CAN BE MOUNTED AS SHOWN, OR ROTATED 90° AS REQUIRED.
  - MTG. HOLES FOR .825 INCH HARDWARE.
  - THICKNESS OF LUG = 1.38 [35.1]
  - DESIGNED FOR VERTICAL MOUNT.
  - MAX CANTILEVER LOAD 159,313 in-lbs [18,000 Nm].
  - PRESSURE RELIEF CLASS IS 65 kA RMS SYMMETRICAL.
  - NOMINAL CREEPAGE DISTANCE 56.9 [1444].
  - MAXIMUM ARRESTER WEIGHT 198 lbs [90 kg].

FOR TENDER PURPOSES ONLY



**DRILLING PLAN**

ALL DIMENSIONS IN INCHES (MM) UNLESS NOTED

ABB INC.  
 Power Product Division  
 900 Distribution Circle, Ft. Peck, PA 15066

SCALE: AS SHOWN  
 SHEET 1 OF 1  
 4E8300

REV. DESCRIPTION & DATE  
 01 OCTOBER 10, 2011

REV. DESCRIPTION & DATE