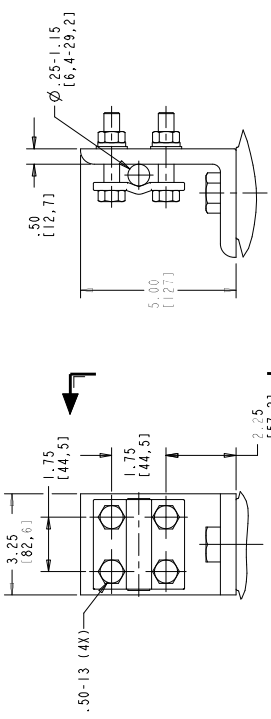
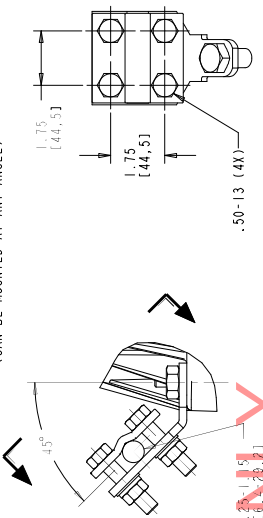


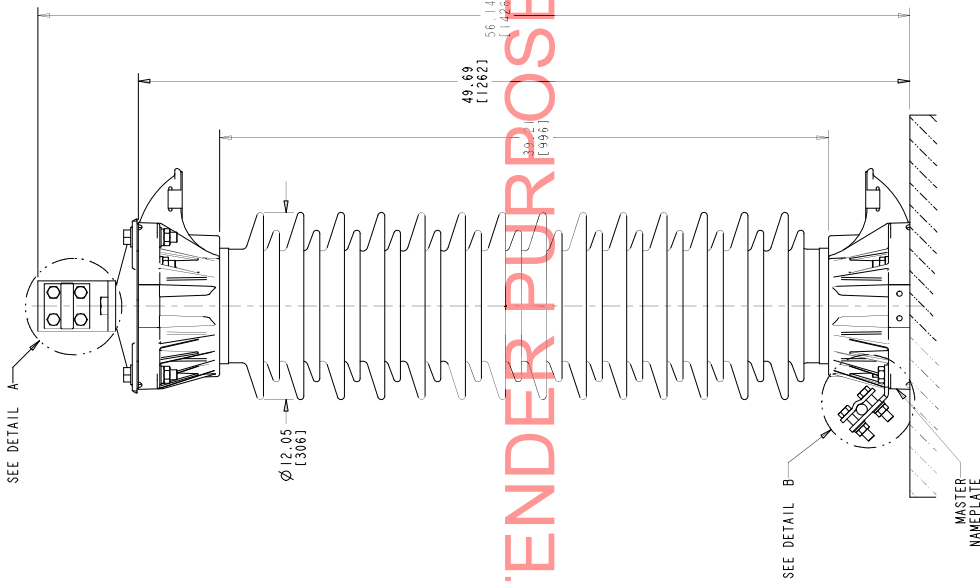
STYLE NO.	RATINGS		TOV (kV rms)	MAXIMUM RESIDUAL VOLTAGE WITH CURRENT WAVE (kV PEAK)				
	VOLTAJE V _r	MCOV V _{mco}		SPL (SIPL) 30/60 μS	LPL (LIPL) 8/20 μS	FW 0.5 μS		
				500 A	3 kA	10 kA	20 kA	10 kA
				STANDARD CREEP				
P0546A02A	54	42.0	Ø10 sec ± 61.5	103	114	123	136	132
P0606A048A	60	48.0	Ø10 sec ± 68.3	115	127	137	151	147
P0666A053A	66	53.0	Ø10 sec ± 75.1	127	139	151	166	162
P0726A057A	72	57.0	Ø10 sec ± 81.9	137	151	164	181	176
P0756A060A	75	60.0	Ø10 sec ± 85.0	145	160	173	190	186
P0786A063A	78	63.0	Ø10 sec ± 88.8	149	164	178	196	191
P0846A068A	84	68.0	Ø10 sec ± 95.6	161	177	192	211	206
P0906A070A	90	70.0	Ø10 sec ± 102	172	189	205	226	220
P0946A073A	94	73.0	Ø10 sec ± 107	179	197	214	235	229
P0966A076A	96	76.0	Ø10 sec ± 109	183	202	219	241	235
P1026A082A	102	82.0	Ø10 sec ± 116	195	215	233	256	250
				EXTRA CREEP				
P0426R034A	42	34.0	Ø10 sec ± 47.8	80.7	88.8	96.0	106	103
P0456R037A	45	36.5	Ø10 sec ± 51.2	86.5	95.3	103	114	111
P0486R039A	48	39.0	Ø10 sec ± 54.6	92.4	102	110	121	118



DETAIL A
(ENLARGED)
SCALE 0.300
LINE TERMINAL (ALUMINUM)
(CAN BE MOUNTED AT ANY ANGLE)



DETAIL B
(ENLARGED)
SCALE 0.500
GROUND TERMINAL (GALVANIZED)
(CAN BE ATTACHED TO ANY LUG)



DRILLING PLAN

ALL DIMENSIONS IN INCHES [MM] UNLESS NOTED

ABB INC.
Power Products Division
300 Distribution Circle, Ft. Pittsburg, PA 15066

SCALE: AS SHOWN

DATE: 08/20/10

REV: 1

4F8301

2

REV. 8-08-0

FOR TENDER PURPOSES ONLY

ABB EXLIM SURGE ARRESTER	MADE IN USA
STYLE NO. *	RATING * kV
SERIAL NO. *	MCOV * kV
IEEE/IEC CLASS. STATION / 4. PRESS. RELIEF CLASS. 65 1A	
DATE *	WT 265 lbs [120 kg]

MASTER NAMEPLATE (SSTL)
* ASSIGNED AT THE TIME OF PRODUCTION AND RECORDED IN THE PROPER LOCATIONS

- NOTES:
- FOR MINIMUM PHASE-TO-GROUND AND PHASE-TO-PHASE CLEARANCES WITH TYPE EXLIM SURGE ARRESTERS. REFER TO THE EXLIM PRODUCT BULLETIN (26MM100009). OTHER APPARATUS STANDARDS, OTHER SPECIFICATIONS OR LOCAL CODES MAY SUPERCEDE DISTANCES SPECIFIED.
 - ARRESTER ASSEMBLY CONSISTS OF ARRESTER UNIT, LINE & GROUND TERMINALS WITH GALVANIZED CLAMPS, AND .50 INCH HARDWARE.
 - LINE & GROUND TERMINALS CAN ACCOMMODATE CU OR AL CABLE.
 - LINE & GROUND TERMINAL CLAMP CAN BE MOUNTED AS SHOWN, OR ROTATED 90° AS REQUIRED.
 - MTG. HOLES FOR .825 INCH HARDWARE.
 - THICKNESS OF LUG = 1.38 (35.1)
 - DESIGNED FOR VERTICAL MOUNT.
 - MAX CANTILEVER LOAD 159,313 in-lbs (18,000 Nm).
 - PRESSURE RELIEF CLASS IS 65 KA RMS SYMMETRICAL.
 - NOMINAL CREEPAGE DISTANCE 129.3 (3285).
 - MAXIMUM ARRESTER WEIGHT 265 lbs (120 kg).

02	DECEMBER 9, 2013
01	OCTOBER 10, 2011

STYLE P0756A060A ADD'D
DRM

REV. DESCRIPTION & DATE