

STYLE NO.	RATINGS		TOV (kV rms)	MAXIMUM RESIDUAL VOLTAGE WITH CURRENT WAVE (kV PEAK)	
	VOLTAJE V _r	MCOV V _{mco}		SPL (S1PL) 30/60 μS	LPL (L1PL) 8/20 μS
				STANDARD CREEP	
P056A042AP	54	42.0	010 sec ± 61.5	103	114 123 136 132
P060A048AP	60	48.0	010 sec ± 68.3	115	127 137 151 147
P066A053AP	66	53.0	010 sec ± 75.1	127	139 151 166 162
P072A057AP	72	57.0	010 sec ± 81.9	137	151 164 181 176
P078A063AP	78	63.0	010 sec ± 88.8	149	164 178 196 191
P084A068AP	84	68.0	010 sec ± 95.6	161	177 192 211 206
P090A070AP	90	70.0	010 sec ± 102	172	189 205 226 220
P096A076AP	96	76.0	010 sec ± 109	183	202 219 241 235
P102A082AP	102	82.0	010 sec ± 116	195	215 233 256 250
				EXTRA CREEP	
P042B034AP	42	34.0	010 sec ± 47.8	80.7	88.8 96.0 106 103
P045B037AP	45	36.5	010 sec ± 51.2	86.5	95.3 103 114 111
P048B039AP	48	39.0	010 sec ± 54.6	92.4	102 110 121 118

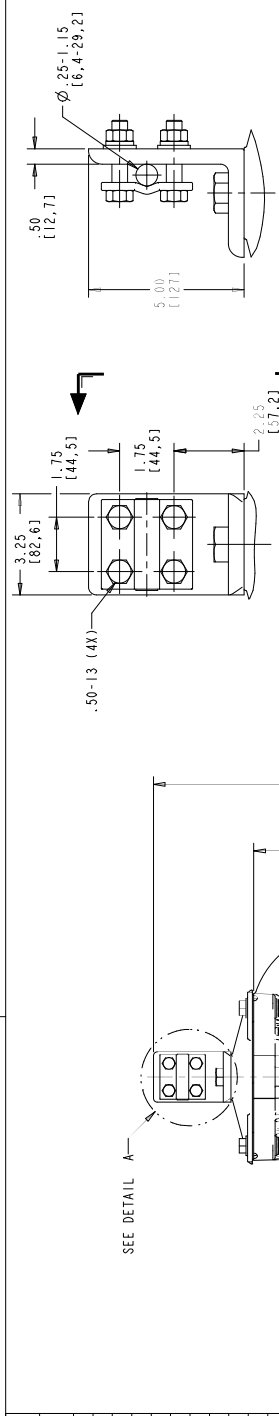
* 500A (3-132 Vr), 1000A (138-240 Vr), 2000A (258-444 Vr)

ABB EXLIM SURGE ARRESTER		MADE IN USA	
SERIAL NO. *	RATING * kV	MCV * kV	LV
IEEE/IEC CLASS: STATION / 4	PRESSURE RELIEF CLASS: 65	1A	
DATE *	W 265 lbs	1100	

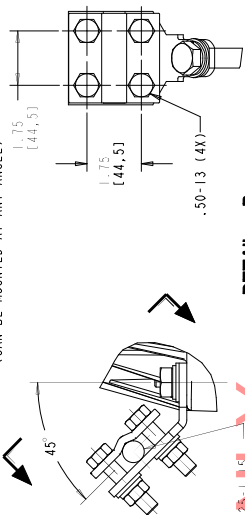
MASTER NAMEPLATE (SSTL)
 * ASSIGNED AT THE TIME OF PRODUCTION AND RECORDED IN THE PROPER LOCATIONS

- NOTES:
- FOR MINIMUM PHASE-TO-GROUND AND PHASE-TO-PHASE CLEARANCES WITH TYPE EXLIM SURGE ARRESTERS (10009), OTHER APPARATUS STANDARDS, RULES AND REGULATIONS OR LOCAL CODES MAY SUPERCEDE DISTANCES SPECIFIED IN THIS ARRESTER ASSEMBLY CONSISTS OF ARRESTER UNIT, LINE & GROUND TERMINALS WITH GALVANIZED CLAMPS, AND .50 INCH HARDWARE.
 - LINE & GROUND TERMINALS CAN ACCOMMODATE CU OR AL CABLE.
 - SIZE NO. 2 TO 1000 MCM (.25 (6.4) TO 1.15 (29.2) DIA.
 - LINE & GROUND TERMINAL CLAMP CAN BE MOUNTED AS SHOWN OR ROTATED 90° AS REQUIRED.
 - MTG. HOLES FOR .625 INCH HARDWARE.
 - THICKNESS OF LUG = 1.38 (35.1)
 - MAXIMUM LEVER LENGTH = 9.31
 - PRESSURE RELIEF CLASS IS 65 KA-RBS SYMMETRICAL.
 - NOMINAL CREEPAGE DISTANCE (29.3 (3285))
 - MAXIMUM ARRESTER WEIGHT 265 lbs (120 kg).
 - ATTACH MOUNTING ADAPTER PLATE TO GROUND OR STRUCTURE. ATTACH ARRESTER TO ADAPTER PLATE USING M16 GALVANIZED BOLT WITH GALVANIZED FLAT WASHER AND LOCK WASHER. TORQUE TO 150 FT-LBS.

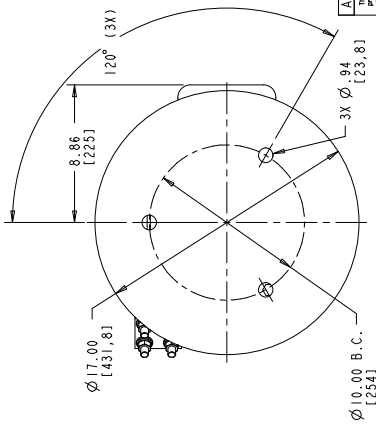
REV. DESCRIPTION & DATE	01 JANUARY 14, 2012
NUMBERS AND REMOVED	02 JANUARY 26, 2012
CHK	



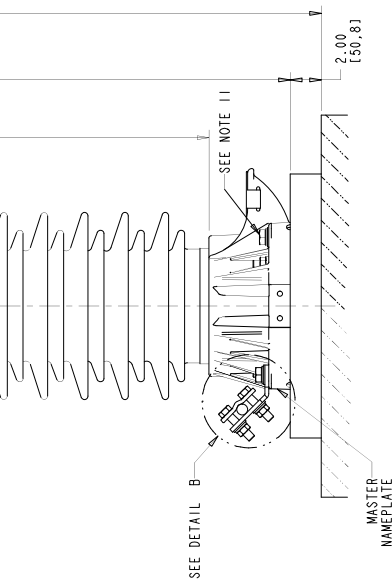
DETAIL A
(ENLARGED)
SCALE: 0.500
LINE TERMINAL (ALUMINUM)
(CAN BE MOUNTED AT ANY ANGLE)



DETAIL B
(ENLARGED)
SCALE: 0.500
GROUND TERMINAL (GALVANIZED)
(CAN BE ATTACHED TO ANY LUG)



DRILLING PLAN



ALL DIMENSIONS IN INCHES (MM) UNLESS NOTED	
Please refer to the drawing for dimensions with units in applicable units or dimension given has precedence over any other.	
ABB INC. Power Products Division 200 Distribution Circle, W. Pittsboro, PA 15066	
SCALE: 1:1	SHEET 1 OF 1
DATE: 01/14/12	4E8341
REV. 2	

FOR TENDER PURPOSES ONLY