

REVISIONS			
REV.	DESCRIPTION	DATE	APPROVED
1	C077003 UPDATED REBRANDING	09/23/19	AR MAS

ZBTSCT SWITCHES	CONTROLLER TYPE	NO. POLES	NEMA 4X CABINET #	LUG RANGE	WIRE BENDING SPACE	
					P(EMERG)	R(NORMAL)
100-400 AMP	MX-250	2,3	F-1884MPX	(QTY 1) #4-600 MCM (33-304mm ²)	17 7/8 (454)	31 (787)
		4	F-1885MPX			26 3/4 (679)

ZBTS(D/CT) SWITCHES	CONTROLLER TYPE	NO. POLES	NEMA 4X CABINET #	LUG RANGE	WIRE BENDING SPACE	
					P(EMERG)	R(NORMAL)
600 AMP	MX-250	2,3	F-1884MPX	(QTY 2) #2-600 MCM (33-304mm ²)	17 7/8 (454)	31 (787)
		4	F-1885MPX			26 3/4 (679)
800-1200 AMP	MX-250	2,3	F-1886MPX	(QTY 4) #2-600 MCM (33-304mm ²)	17 7/8 (454)	29 1/4 (743)
		4	F-1887MPX			24 3/4 (629)

CABINET DIMENSIONS			
CABINET	A	B	C
F-1884MPX	88 (2235)	36 (914)	28 1/4 (718)
F-1885MPX	88 (2235)	40 (1016)	28 1/4 (718)
F-1887MPX	88 (2235)	46 (1168)	28 1/4 (718)
F-1886MPX	88 (2235)	40 (1016)	28 1/4 (718)

- NOTES:**
- MATERIAL: 10 GA. STEEL .134(3) REF. UNLESS OTHERWISE NOTED.
 - FINISH: PER F-7000.
 - LOAD AND EMERGENCY LUG CONNECTIONS AT TOP OF BYPASS SWITCH. NORMAL LUG CONNECTIONS ON RIGHT SIDE OF MOUNTING FRAME.
 - ALL CABLES MUST ENTER IN TOP WIRING AREA OF CABINET ABOVE BYPASS SWITCH. NO CABLE ENTRY ALLOWED IN BOTTOM OF CABINET.
 - ADDITIONAL REAR BAY AVAILABLE FOR BOTTOM CABLE ENTRY. CONSULT FACTORY.
 - ALL DIMENSIONS ARE FOR REFERENCE ONLY AND SHOWN IN INCHES(MILLIMETERS).
 - CONSTRUCTION PER UL 1008
 - FOR SEISMIC MOUNTING, REFER TO SHEET NO.2.

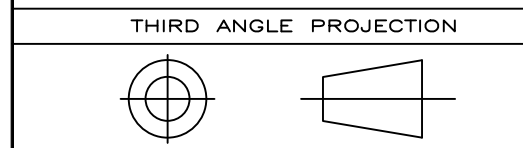
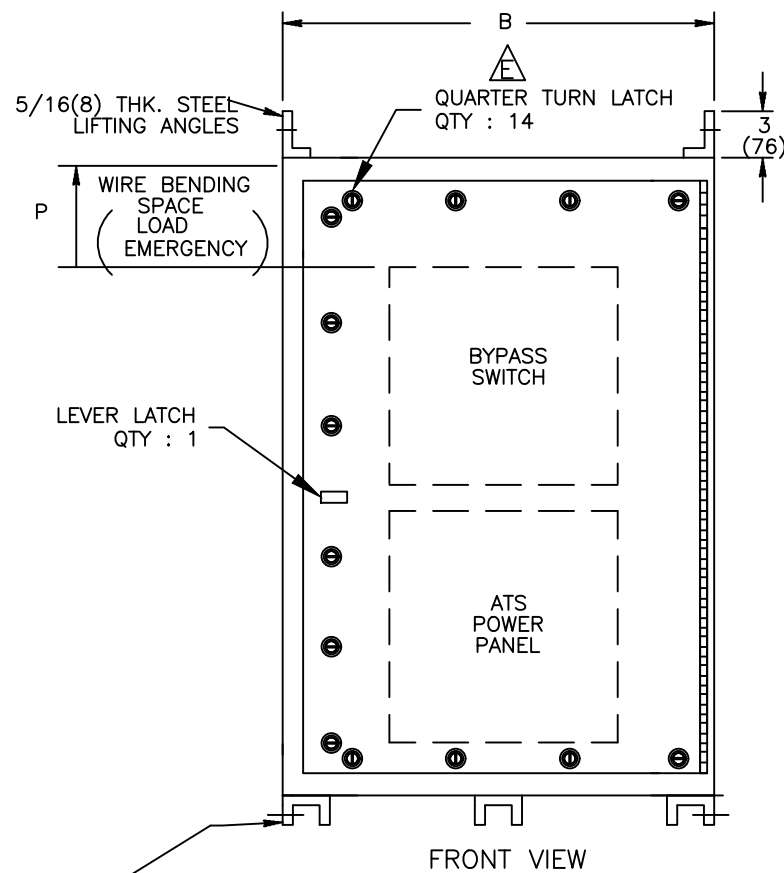


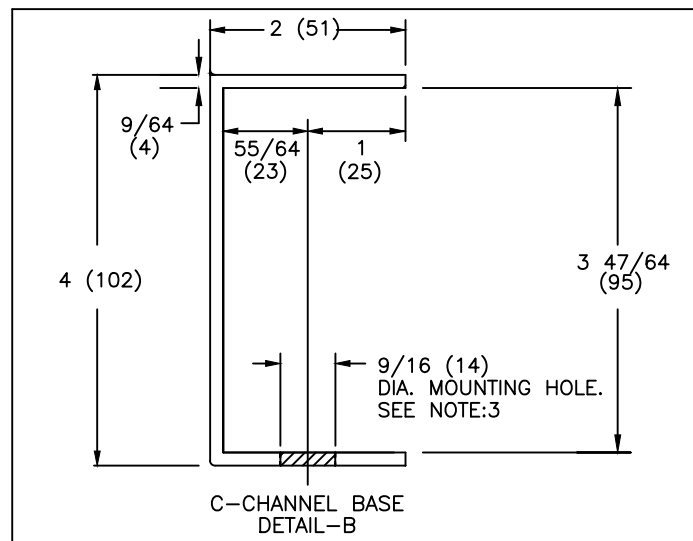
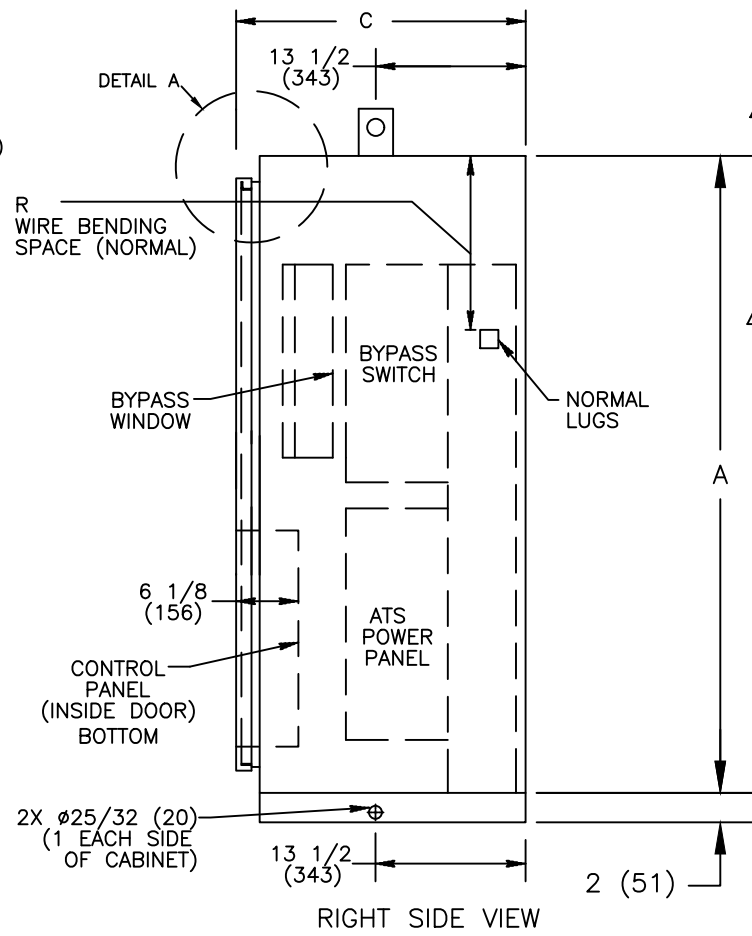
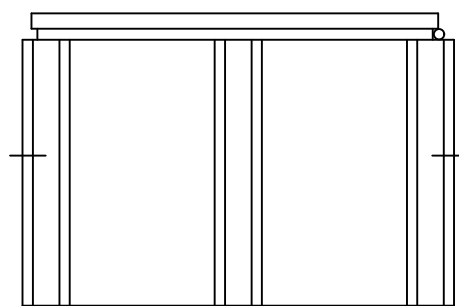
ABB PROPRIETARY AND CONFIDENTIAL INFORMATION

The information contained in the document has to be kept strictly confidential. Any unauthorized use, reproduction, distribution or disclosure to third parties is strictly forbidden. ABB reserves all rights regarding intellectual Property Rights. Copyright 2018 ABB. All rights reserved

SIGNATURES		DATE	TRANSFER SWITCHES NEMA 4X ENCL.
MODEL	SG	01/31/97	
DETAIL			
CHECKED			
ENGRG			
MFG			
QUALITY			TITLE
ISSUED			
DRAWING FILE:	50C-1012.dwg	FIRST MADE FOR:	ZBTS(D) 600-1200 AMP & ZBTSCT 100-1200 AMP
MODEL / ASSEMBLY FILE:	ZBTS(D) 600-1200 AMP & ZBTSCT 100-1200 AMP	SIZE	B
# CTQs	⊖ CRITICAL TO QUALITY CHARACTERISTIC	CAGE CODE	DWG NO
AutoCad Generated		50C-1012	
		SCALE:	N/A
		SHEET 1 OF 2	



2(51)x4(102)x2(51)
10 GA. .134(3) REF.
WELDED STEEL CHANNELS



ZBTSCT SWITCHES	CONTROLLER TYPE	NO. POLES	NEMA 4X CABINET #	LUG RANGE	WIRE BENDING SPACE	
					P(EMERG)	R(NORMAL)
100-400 AMP	MX-250	2,3	F-1884MPX	(QTY 1) #4-600 MCM (33-304mm ²)	17 7/8 (454)	31 (787)
		4	F-1885MPX			26 3/4 (679)

ZBTS(D/CT) SWITCHES	CONTROLLER TYPE	NO. POLES	NEMA 4X CABINET #	LUG RANGE	WIRE BENDING SPACE	
					P(EMERG)	R(NORMAL)
600 AMP	MX-250	2,3	F-1884MPX	(QTY 2) #2-600 MCM (33-304mm ²)	17 7/8 (454)	31 (787)
		4	F-1885MPX			26 3/4 (679)
800-1200 AMP	MX-250	2,3	F-1886MPX	(QTY 4) #2-600 MCM (33-304mm ²)	17 7/8 (454)	29 1/4 (743)
		4	F-1867MPX			24 3/4 (629)

CABINET DIMENSIONS			
CABINET	A	B	C
F-1884MPX	88 (2235)	36 (914)	28 1/4 (718)
F-1885MPX	88 (2235)	40 (1016)	28 1/4 (718)
F-1887MPX	88 (2235)	46 (1168)	28 1/4 (718)
F-1886MPX	88 (2235)	40 (1016)	28 1/4 (718)

NOTES:

- ALL DIMENSIONS ARE FOR REFERENCE ONLY AND SHOWN IN INCHES (MILLIMETERS).
- SEISMIC DATA OF MOST VULNERABLE ATS CONSTRUCTION WITHIN ITS PLATFORM:

MAXIMUM DEFLECTION AT TOP OF GEAR: dss=0.69 INCHES (18 mm) dfb=0.21 INCHES (5 mm)
QUALIFIED BY: TIME HISTORY SHAKE TABLE TEST IEEE-693-2005-HIGHx2.5 (64 mm) IBC-2003-300%G
RESONANCE FREQUENCIES: fss=10.9 Hz ffb=19.5 Hz fv>33.0 Hz
MAXIMUM REACTION TO ANY BOLT: Vss=945 LBS (430 KG) SHEAR (DEAD LOAD +/- SEISMIC) Vfb=945 LBS (430 KG) SHEAR Tv=1872 LBS (851 KG) UP Pv=2613 LBS (1188 KG) DOWN

- BOLT ENCLOSURE FROM C-CHANNEL BASE (SEE DETAIL B) USING THE FOLLOWING SEISMIC CERTIFIED MOUNTING HARDWARE PER MOUNTING HOLE:
(HARDWARE PROVIDED BY INSTALLER).
 - 1/2-13 GRADE 5 BOLT TORQUE TO 15 FT-LBS. (95 NEWTON METERS).
 - US STANDARD HIGH STRENGTH ZINC-PLATED FLAT WASHER 5/8 (16) I.D. AND 1-1/2 (38) O.D.
 - 1/2 (13) HELICAL SPRING LOCK WASHER.

SIGNATURES	DATE
MODEL SG	01/31/97
DETAIL	
CHECKED	
ENGRG	
MFG	
QUALITY	
ISSUED	

TITLE		
ABB		
TRANSFER SWITCHES NEMA 4X ENCL.		
FIRST MADE FOR: ZBTS(D) 600-1200 AMP & ZBTSCT 100-1200 AMP	SIZE CAGE CODE	DWG NO
	B	50C-1012
SCALE: N/A	SHEET 2 OF 2	

THIRD ANGLE PROJECTION

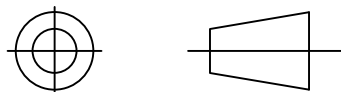


ABB PROPRIETARY AND CONFIDENTIAL INFORMATION

The information contained in the document has to be kept strictly confidential. Any unauthorized use, reproduction, distribution or disclosure to third parties is strictly forbidden. ABB reserves all rights regarding intellectual Property Rights. Copyright 2018 ABB. All rights reserved

AutoCad Generated

CTQs CRITICAL TO QUALITY CHARACTERISTIC