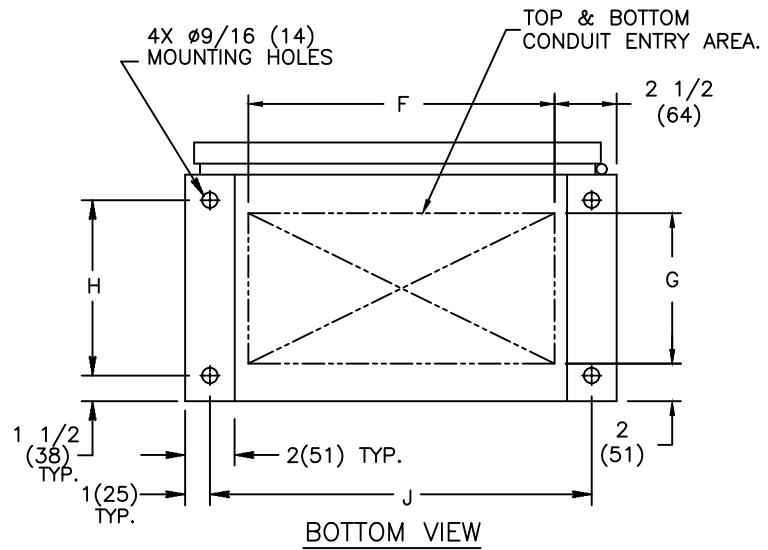
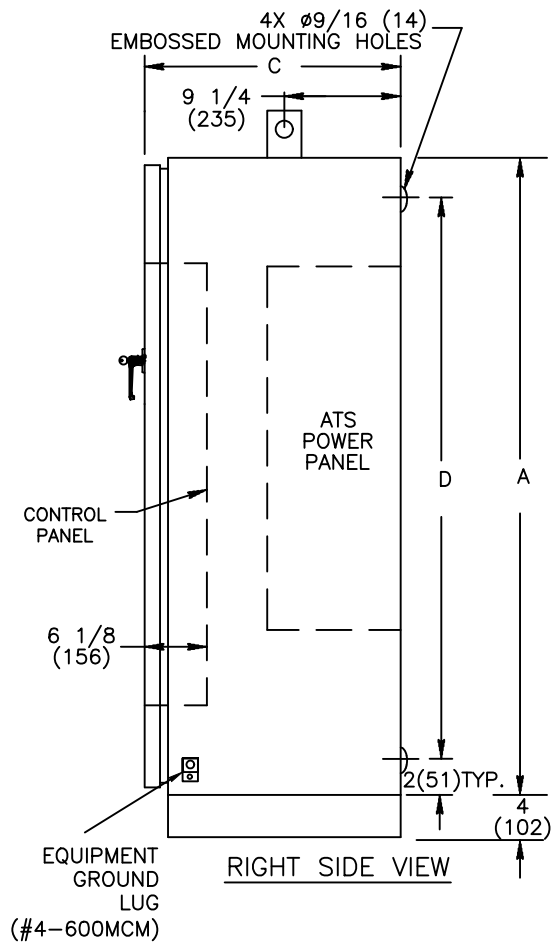


2(51)x4(102)x2(51)  
10 GA. .134(3) REF.  
WELDED STEEL

(600A 4POLE  
SHOWN AS  
REFERENCE ONLY)



REVISIONS			
REV.	DESCRIPTION	DATE	APPROVED
2	C076901 UPDATED REBRANDING	09/20/19	AR MAS

MODEL	AMPERAGE	NO. POLES	NEMA CABINET	LUG RANGE	WIRE BENDING SPACE		WIRE GUTTERS		
					P(TOP)	R(BOTTOM)	S(LEFT)	T(RIGHT)	
ZTS ZTSD ZTSCT	600	2,3	8600049971P	(QTY 2) #2-600 MCM (33-304mm <sup>2</sup> )	18 1/2 (470)	18 (457)	19 3/8 (492)	1 1/8 (29)	
		4					13 (330)		
	800	2,3					(QTY 4) #2-600 MCM (33-304mm <sup>2</sup> )		17 1/8 (435)
		4							10 3/4 (273)

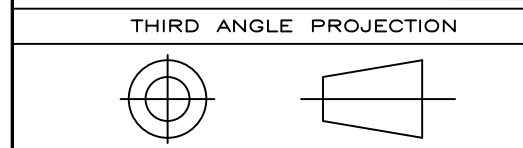
**NOTES:**

- MATERIAL: UNLESS OTHERWISE NOTED.  
A. 12 GA. (.104) REF. 1018 HRS (8600049971P)
- FINISH: ANSI 61 GREY
- ALL DIMENSIONS ARE FOR REFERENCE ONLY. SHOWN IN INCHES (MILLIMETER)
- CONSTRUCTION PER UL 1008 STANDARD.
- SWITCH SUPPLIED WITH STANDARD MECHANICAL LUG, RATED FOR AL&CU CABLES.
- SWITCH IS DESIGNED FOR BOTH TOP AND BOTTOM CABLE ENTRY WITH STANDARD SWITCH CONFIGURATION IS, LOAD AND NORMAL LUGS ON TOP AND EMERGENCY LUGS AT BOTTOM.
- 100% RATED SOLID/SWITCH NEUTRAL PROVIDED PER THE SWITCH CONFIGURATION.
- FOR SEISMIC MOUNTING, REFER TO SHEET NO.2
- REFER LUG TORQUE LABEL FOR TORQUE INFORMATION.

CABINET DIMENSIONS									
CABINET	A	B	C	D	E	F	G	H	J
8600049971P	70 (1778)	40 (1016)	19 1/2 (495)	66 (1676)	36 (914)	35 (889)	11 (279)	15 1/2 (394)	38 (965)

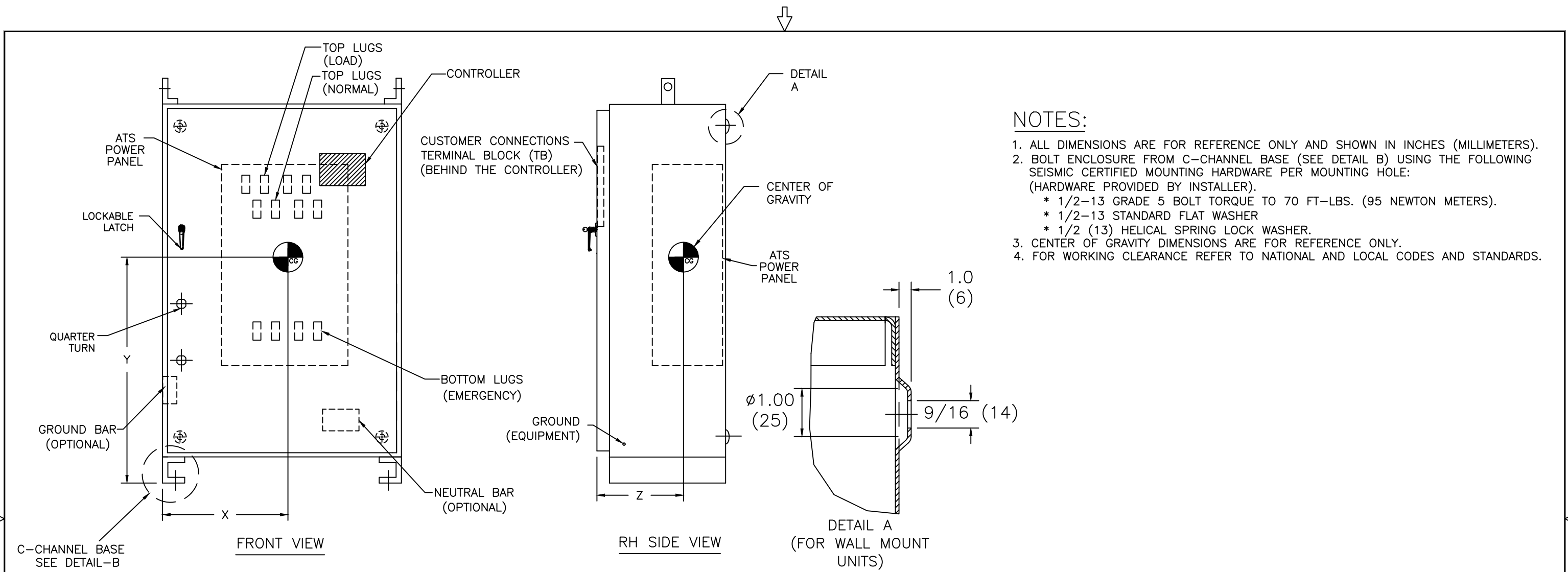


600-800A ATS LAYOUT  
NEMA 1 ENCLOSURE

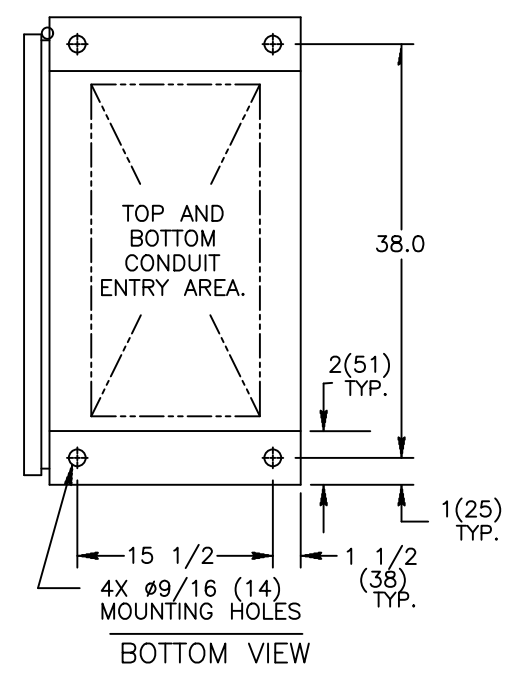
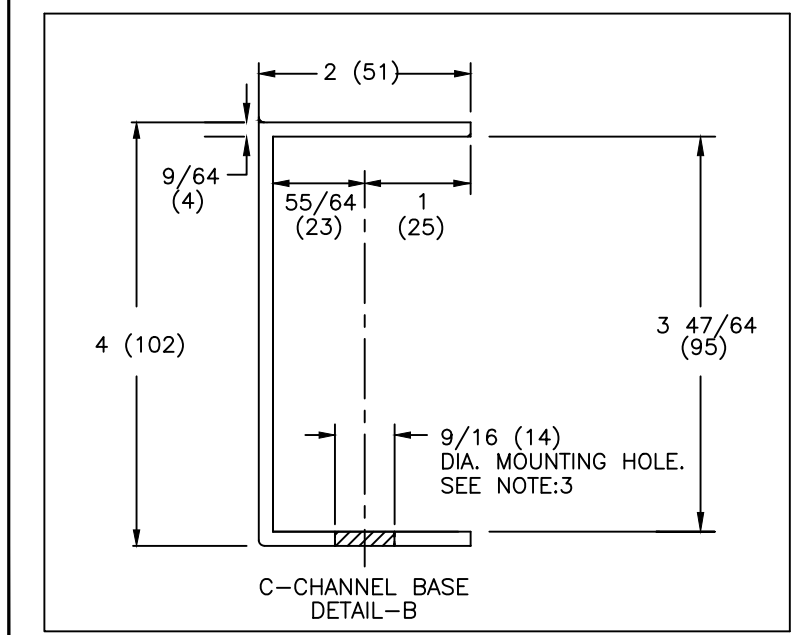


**ABB PROPRIETARY AND CONFIDENTIAL INFORMATION**  
The information contained in the document has to be kept strictly confidential.  
Any unauthorized use, reproduction, distribution or disclosure to third parties is strictly forbidden.  
ABB reserves all rights regarding intellectual Property Rights.  
Copyright 2018 ABB. All rights reserved

SIGNATURES		DATE	TITLE	
MODEL	EC	08/25/17	FIRST MADE FOR: ZTS(D/CT) (600-800 AMP) SIZE CAGE CODE DWG NO <b>50C-1037</b>	
DETAIL				
CHECKED				
ENGRG				
MFG				
QUALITY				
ISSUED			SCALE: N/A SHEET 1 OF 2	
DRAWING FILE:	50c-1037.dwg		# CTQs	
MODEL / ASSEMBLY FILE:	ZTS(D/CT) (600-800 AMP)			
AutoCad Generated				

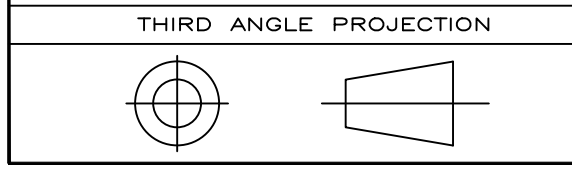


- NOTES:**
- ALL DIMENSIONS ARE FOR REFERENCE ONLY AND SHOWN IN INCHES (MILLIMETERS).
  - BOLT ENCLOSURE FROM C-CHANNEL BASE (SEE DETAIL B) USING THE FOLLOWING SEISMIC CERTIFIED MOUNTING HARDWARE PER MOUNTING HOLE:  
 (HARDWARE PROVIDED BY INSTALLER).  
 \* 1/2-13 GRADE 5 BOLT TORQUE TO 70 FT-LBS. (95 NEWTON METERS).  
 \* 1/2-13 STANDARD FLAT WASHER  
 \* 1/2 (13) HELICAL SPRING LOCK WASHER.
  - CENTER OF GRAVITY DIMENSIONS ARE FOR REFERENCE ONLY.
  - FOR WORKING CLEARANCE REFER TO NATIONAL AND LOCAL CODES AND STANDARDS.




UNIT WEIGHT WITH NEMA-1 CABINET:

AMP	POLE	WEIGHT LB(kg)	CENTER OF GRAVITY in(mm)		
			X	Y	Z
600	3	410(186)	23.5	34.0	11.5
	4	440(200)	(557)	(864)	(292)
800	3	460(209)	22.0	35.0	12.0
	4	510(231)	(559)	(889)	(305)



**ABB PROPRIETARY AND CONFIDENTIAL INFORMATION**

The information contained in the document has to be kept strictly confidential. Any unauthorized use, reproduction, distribution or disclosure to third parties is strictly forbidden. ABB reserves all rights regarding intellectual Property Rights. Copyright 2018 ABB. All rights reserved.

SIGNATURES		DATE		 <b>SEISMIC MOUNTING DETAILS WITH ENCLOSURE</b>	
MODEL	EC	11/01/00			
DETAIL					
CHECKED					
ENGRG					
MFG				TITLE	
QUALITY				FIRST MADE FOR: ZTS(D/CT) (600-800 AMP)	
ISSUED				SIZE	B
DRAWING FILE: 50C-1037.dwg		CAGE CODE	DWG NO		
MODEL / ASSEMBLY FILE: ZTS(D/CT) (600-800 AMP)				50C-1037	
AutoCad Generated	# CTQs	$\ominus$ CRITICAL TO QUALITY CHARACTERISTIC	SCALE: N/A	SHEET 1 OF 2	