

REVISIONS			
REV.	DESCRIPTION	DATE	APPROVED
1	C075076 UPDATED REBRANDING	08/28/19	AR MAS

MODEL	AMPERAGE	NO. POLES	NEMA CABINET	LUG RANGE	WIRE BENDING SPACE		WIRE GUTTERS		CABINET REAR Y
					P(TOP)	R(BOTTOM)	S(LEFT)	T(RIGHT)	
ZTG(D)	1600-2000	2,3	F-1869MPX	(QTY 8) #2-600 MCM (33-304mm ²)	41 1/8 (1045)	20 1/8 (511)	5 3/4 (146)	17 1/4 (438)	23 5/8 (600)
		4						5 3/4 (146)	
	2600	2,3						17 1/4 (438)	16 1/4 (413)
		4						5 3/4 (146)	

- NOTES:
1. MATERIAL: 10 GA. .134(3) REF. 304 STAINLESS STEEL
 2. FINISH: NONE
 3. ALL CABLE ENTRY IN REAR OF CABINET.
 4. WIRING BENDING AND GUTTER SPACES MEASURED AT POINT OF CONNECTION TO LUGS.
 5. ALL DIMENSIONS ARE FOR REFERENCE ONLY AND SHOWN IN INCHES(MILLIMETERS).
 6. ALL SIDE AND REAR DOOR/PANELS SHALL HAVE GUTTER AND KNIFE EDGE FLANGES, AND HAVE HINGES ON THE RIGHT HAND SIDE.
 7. CONSTRUCTION PER UL 1008
 8. FOR SEISMIC MOUNTING, REFER TO SHEET NO.2

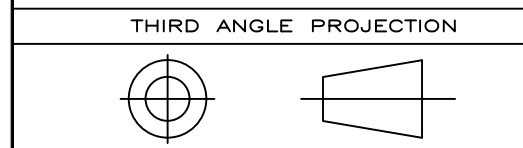
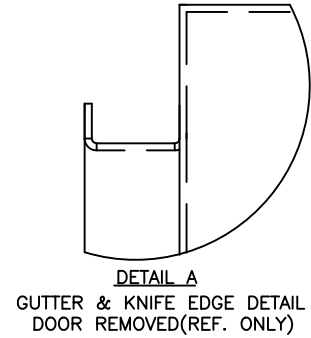
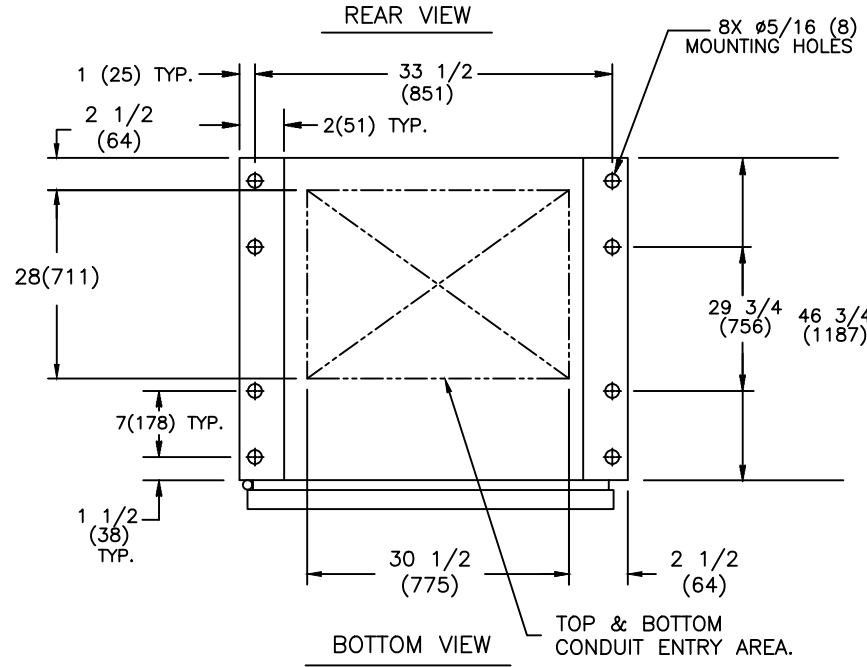

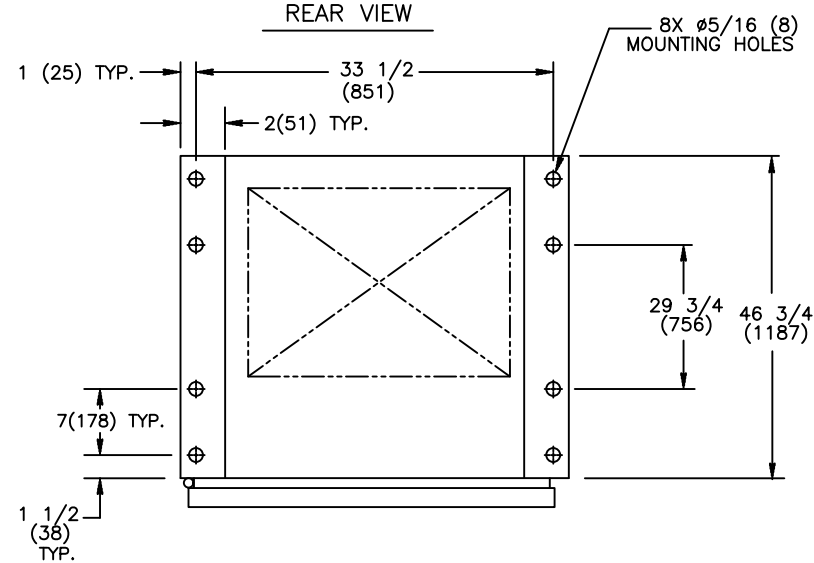
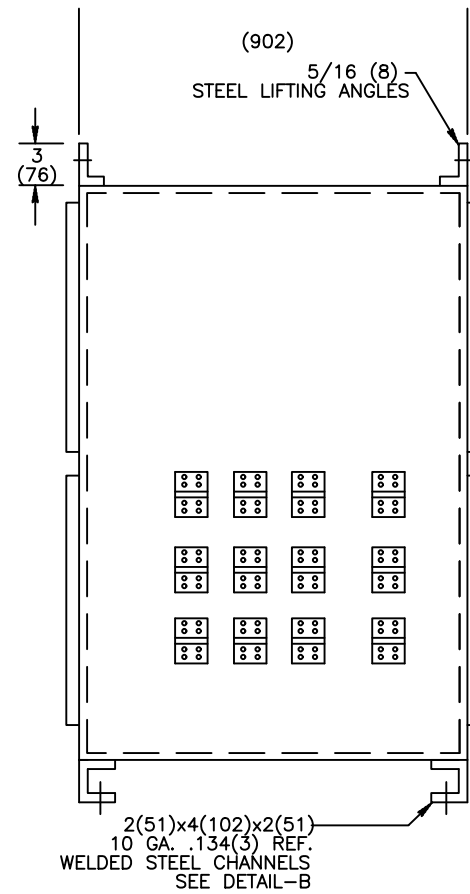
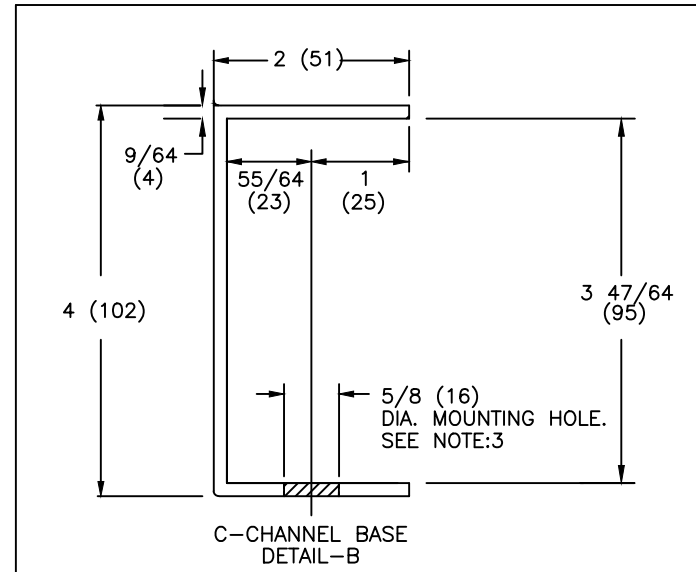


ABB PROPRIETARY AND CONFIDENTIAL INFORMATION
 The information contained in the document has to be kept strictly confidential. Any unauthorized use, reproduction, distribution or disclosure to third parties is strictly forbidden. ABB reserves all rights regarding intellectual Property Rights. Copyright 2018 ABB. All rights reserved.

SIGNATURES		DATE		 TRANSFER SWITCHES NEMA 4X ENCLOSURES	
MODEL	SG	02/05/01			
DETAIL					
CHECKED					
ENGRG	SB				
MFG				TITLE	
QUALITY					
ISSUED				FIRST MADE FOR:	
DRAWING FILE: 52c-1006.dwg		SIZE	CAGE CODE	DWG NO	
MODEL / ASSEMBLY FILE: ZTG(D) 1600-2600 AMP		B		52C-1006	
# CTQs	⊖	CRITICAL TO QUALITY CHARACTERISTIC		SCALE: N/A	SHEET 1 OF 2

AutoCad Generated



NOTES:

1. ALL DIMENSIONS ARE FOR REFERENCE ONLY AND SHOWN IN INCHES (MILLIMETERS).
2. SEISMIC DATA OF MOST VULNERABLE ATS CONSTRUCTION WITHIN ITS PLATFORM:

MAXIMUM DEFLECTION AT TOP OF GEAR:	dss=0.69 INCHES (18 mm) dfb=0.21 INCHES (5 mm)
QUALIFIED BY:	TIME HISTORY SHAKE TABLE TEST IEEE-693-2005-HIGHx2.5 (64 mm) IBC-2003-300%G
RESONANCE FREQUENCIES:	fss=10.9 Hz ffb=19.5 Hz fv=>33.0 Hz
MAXIMUM REACTION TO ANY BOLT: (DEAD LOAD +/- SEISMIC)	Vss=945 LBS (430 KG) SHEAR Vfb=945 LBS (430 KG) SHEAR Tv=1872 LBS (851 KG) UP Pv=2613 LBS (1188 KG) DOWN

3. BOLT ENCLOSURE FROM C-CHANNEL BASE (SEE DETAIL B) USING THE FOLLOWING SEISMIC CERTIFIED MOUNTING HARDWARE PER MOUNTING HOLE:
(HARDWARE PROVIDED BY INSTALLER).
 - 1/2-13 GRADE 5 BOLT TORQUE TO 15 FT-LBS. (95 NEWTON METERS).
 - US STANDARD HIGH STRENGTH ZINC-PLATED FLAT WASHER 5/8 (16) I.D. AND 1-1/2 (38) O.D.
 - 1/2 (13) HELICAL SPRING LOCK WASHER.

MODEL	AMPERAGE	NO. POLES	NEMA CABINET	WEIGHT LB (Kg)
ZTG & ZTGD	1600-2000	2, 3	F-1869MPX	1110 (503)
		4		1260 (572)
2600	2, 3	1230 (558)		
	4	1480 (671)		

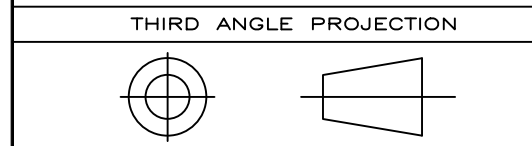


ABB PROPRIETARY AND CONFIDENTIAL INFORMATION
 The information contained in the document has to be kept strictly confidential.
 Any unauthorized use, reproduction, distribution or disclosure to third parties is strictly forbidden.
 ABB reserves all rights regarding intellectual Property Rights.
 Copyright 2018 ABB. All rights reserved

AutoCad Generated

SIGNATURES		DATE
MODEL	SG	02/05/01
DETAIL		
CHECKED		
ENGRG	SB	
MFG		
QUALITY		
ISSUED		
DRAWING FILE:	52c-1006.dwg	
MODEL / ASSEMBLY FILE:	ZTG(D) 1600-2600 AMP	
# CTQs	⊖ CRITICAL TO QUALITY CHARACTERISTIC	

ABB

TITLE
**NEMA 4X ENCLOSURES
 SEISMIC MOUNTING DETAILS**

FIRST MADE FOR:	SIZE	CAGE CODE	DWG NO
	B		52C-1006
SCALE:	N/A		SHEET 2 OF 2