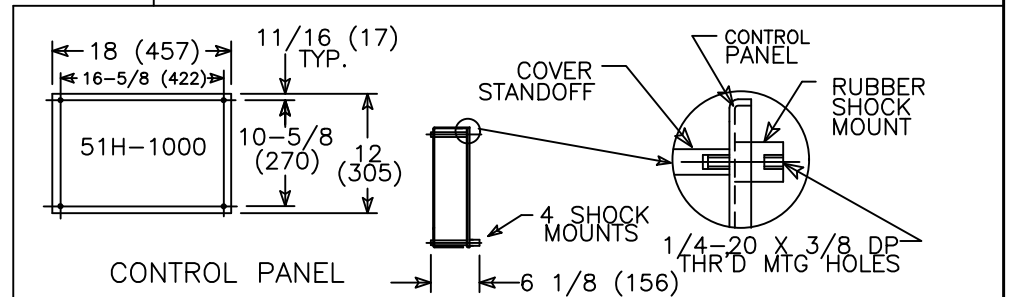
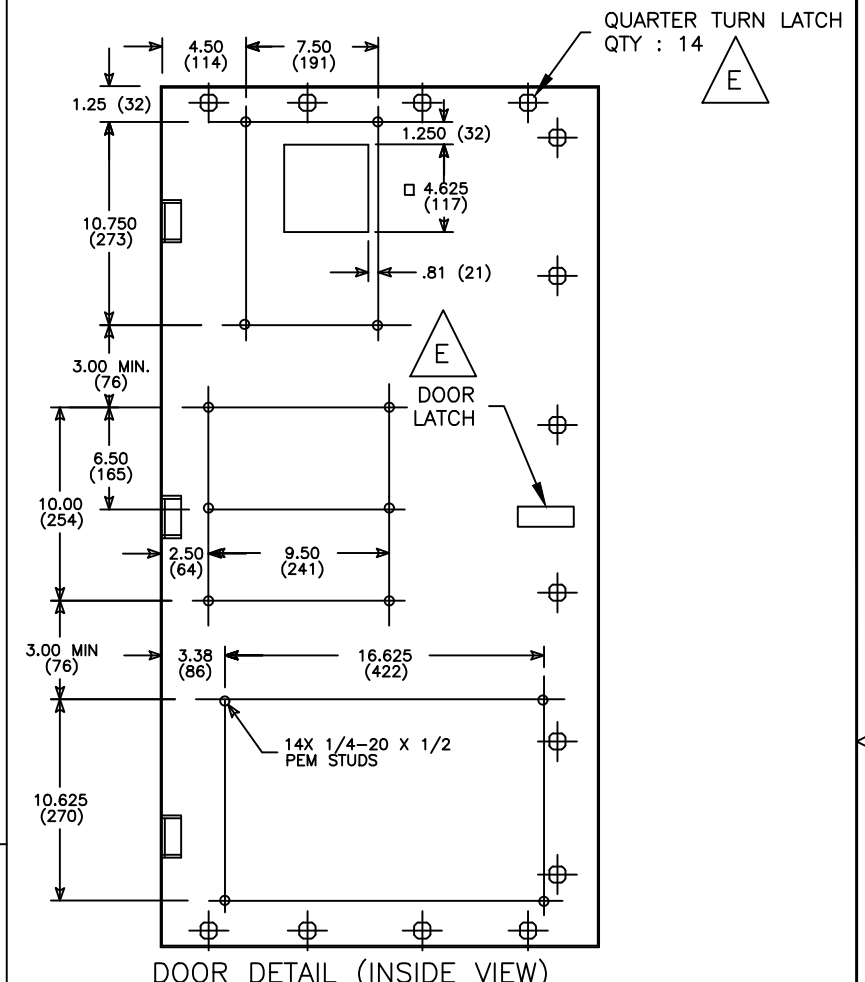
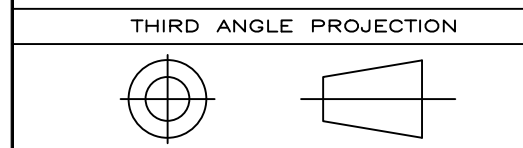
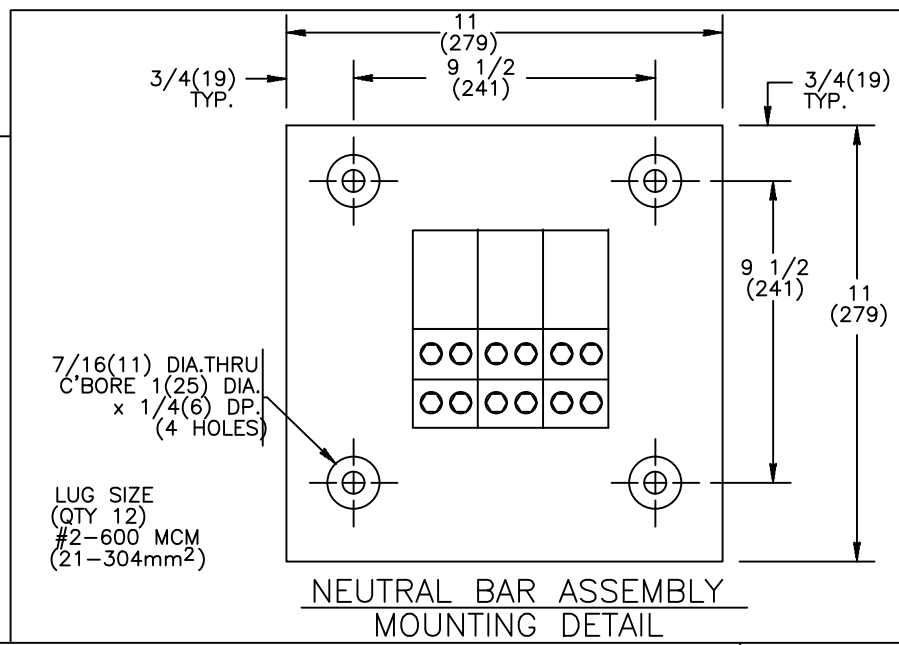


REVISIONS			
REV.	DESCRIPTION	DATE	APPROVED
1	C075076 UPDATED REBRANDING	08/26/19	AR MAS




LUG SIZE	
1000-1200A (QTY 4)	#2- 600 MCM (21-304mm <sup>2</sup> )

- NOTES:**
- FOR 2-POLE SWITCHES, OMIT CENTER POLE.
  - OPEN TYPE SWITCH SUPPLIED WITH 6 FT. (1.8m) LONG HARNESS BETWEEN POWER AND CONTROL PANELS. HARNESS EXITS FROM LOWER RIGHT CORNER OF POWER PANEL.
  - DO NOT RUN CABLES IN FRONT OF SWITCH. RUN ALL CABLES ON RIGHT SIDE.
  - MAINTAIN ELECTRICAL CLEARANCE OF 1(25mm) MIN. BETWEEN LIVE METAL PARTS AND GROUNDED METAL.
  - DIMENSIONS FOR 3-POLE AND 4-POLE SWITCHES ARE IDENTICAL EXCEPT AS NOTED.
  - ALL DIMENSIONS ARE FOR REFERENCE ONLY AND SHOWN IN INCHES (MILLIMETERS).



**ABB PROPRIETARY AND CONFIDENTIAL INFORMATION**  
 The information contained in the document has to be kept strictly confidential. Any unauthorized use, reproduction, distribution or disclosure to third parties is strictly forbidden. ABB reserves all rights regarding intellectual Property Rights. Copyright 2018 ABB. All rights reserved.

SIGNATURES		DATE	TITLE	
MODEL	RMC	9/18/96	 <b>TRANSFER SWITCH FRONT LUGS</b>	
DETAIL				
CHECKED				
ENGRG	MF			
MFG				
QUALITY			FIRST MADE FOR: ZTGD 1000-1200 AMP 2,3 4 POLES	
ISSUED			SIZE	B
DRAWING FILE: 52c-2008.dwg		CAGE CODE	DWG NO	
MODEL / ASSEMBLY FILE: ZTGD 1000-1200 AMP 2,3 4 POLES		52C-2008		
# CTOs	⊕ CRITICAL TO QUALITY CHARACTERISTIC	SCALE: NA	SHEET 1 OF 1	

AutoCad Generated