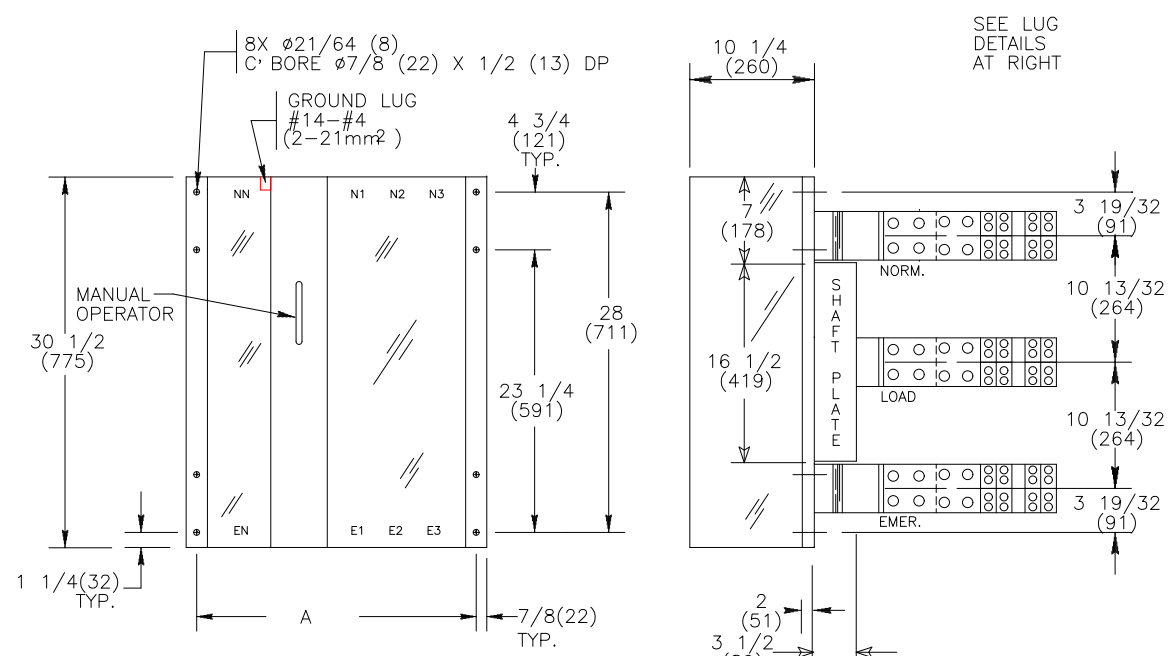
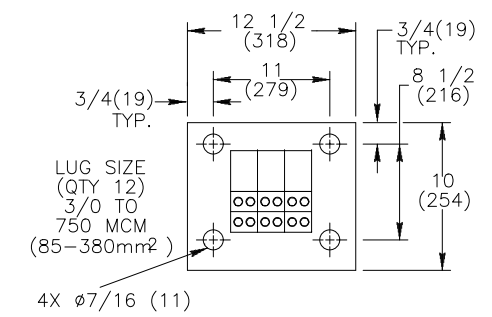


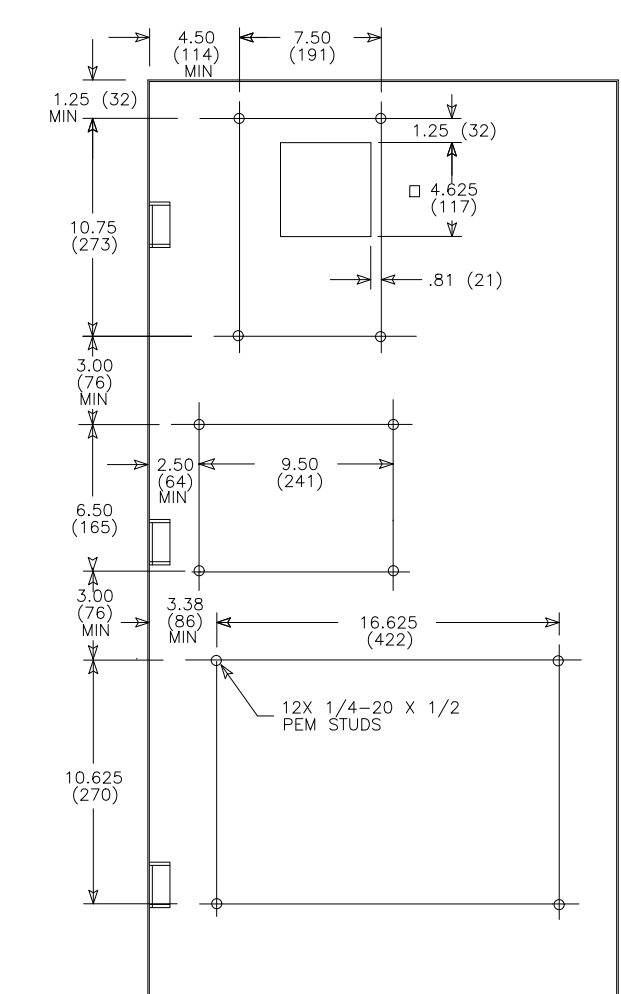
REVISIONS			
REV.	DESCRIPTION	DATE	APPROVED
1	C079254	10/18/19	GK MAS



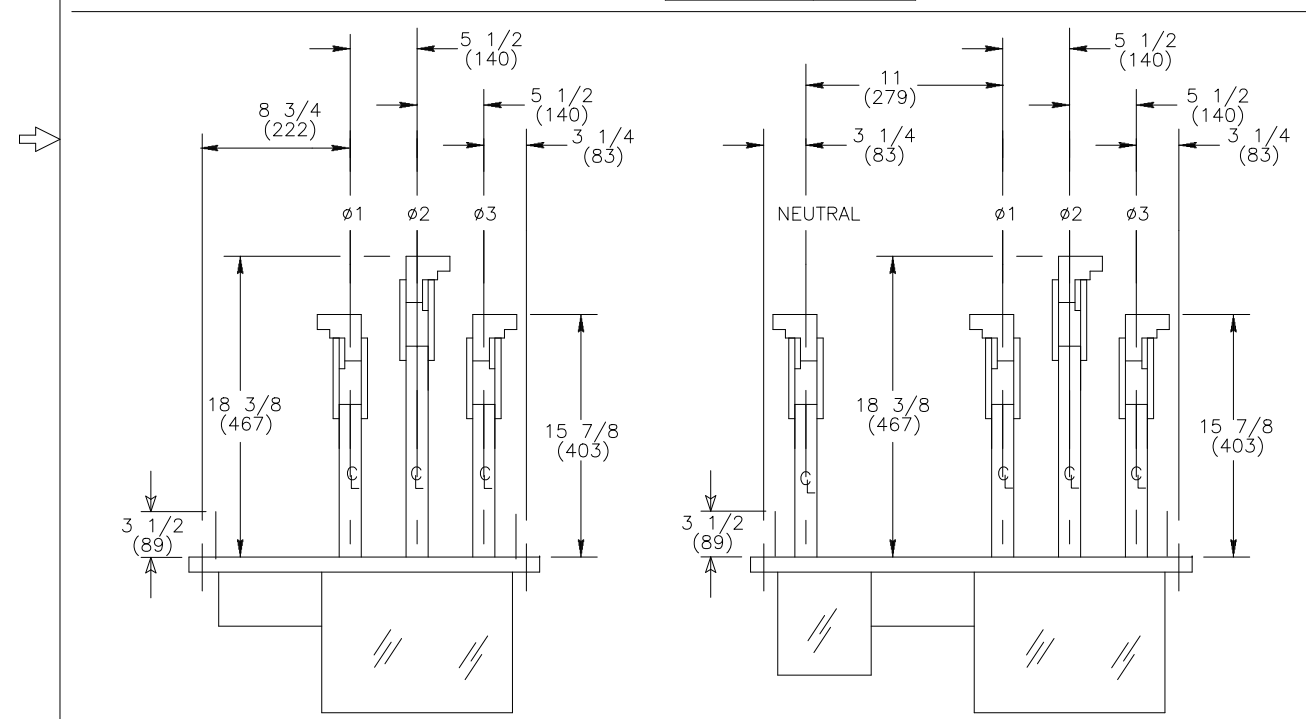
	A
2/3-POLE	23 (584)
4-POLE	28 1/2 (724)



NEUTRAL BAR ASSEMBLY



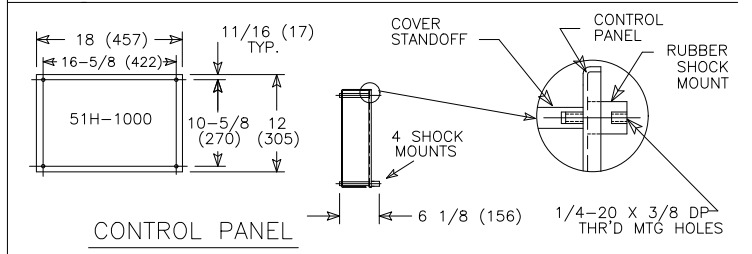
DOOR DETAIL (INSIDE VIEW)



2/3-POLE SWITCH LUG DETAILS (TOP VIEW)

4-POLE SWITCH LUG DETAILS (TOP VIEW)

- NOTES:
- FOR 2-POLE SWITCHES, OMIT CENTER POLE.
 - OPEN TYPE SWITCH SUPPLIED WITH 6 FT. (1.8m) LONG HARNESS BETWEEN POWER AND CONTROL PANELS. HARNESS EXITS FROM LOWER RIGHT CORNER OF POWER PANEL.
 - DO NOT RUN CABLES IN FRONT OF SWITCH. RUN ALL CABLES ON RIGHT SIDE.
 - ALL FRACTIONAL TOLERANCES $\pm 1/64$ (0.4mm) UNLESS OTHERWISE SPECIFIED.
 - MAINTAIN ELECTRICAL CLEARANCE OF 1(25mm) MIN. BETWEEN LIVE METAL PARTS AND GROUNDED METAL.
 - ALL DIMENSIONS ARE FOR REFERENCE ONLY AND SHOWN IN INCHES(MILLIMETERS).



CONTROL PANEL

THIRD ANGLE PROJECTION

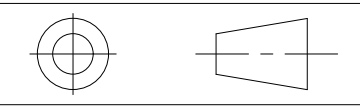


ABB PROPRIETARY AND CONFIDENTIAL INFORMATION
 The information contained in the document has to be kept strictly confidential. Any unauthorized use, reproduction, distribution or disclosure to third parties is strictly forbidden.
 ABB reserves all rights regarding intellectual Property Rights.
 Copyright 2018 ABB. All rights reserved

SIGNATURES		DATE
MODEL	SG	08/17/98
DETAIL		
CHECKED		
ENGRG	SB	08/17/98
MFG		
QUALITY		
ISSUED		
DRAWING FILE:	52C-2011	
MODEL / ASSEMBLY FILE:	ZTGK20-300 (2000-3000 AMP) 2,3,4 POLES	
# CTGs	⊕ CRITICAL TO QUALITY CHARACTERISTIC	

TITLE		
ABB		
TRANSFER SWITCH REAR LUGS		
FIRST MADE FOR:	ZTGK (1600-2000 AMP) 2,3,4 POLES	
SIZE	B	CAGE CODE
DWG NO	52C-2011	
SCALE:	N/A	SHEET 1 OF 1

AutoCad Generated