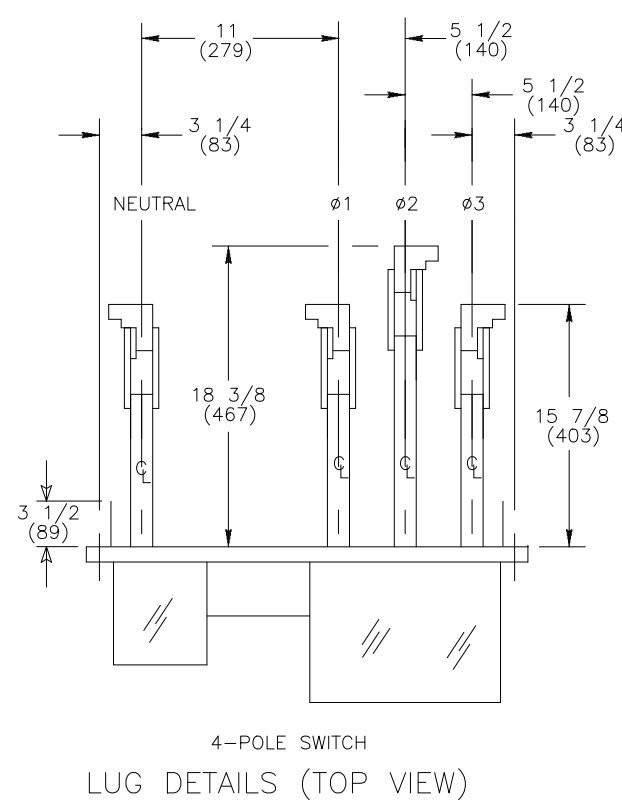
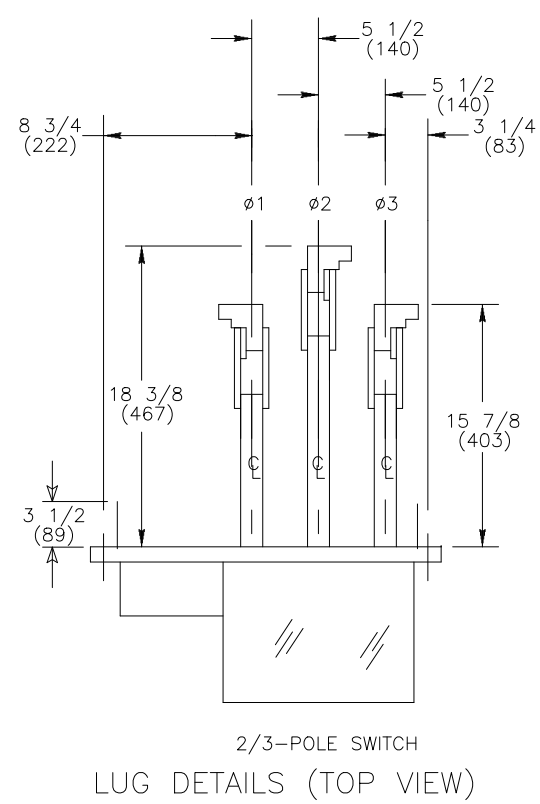
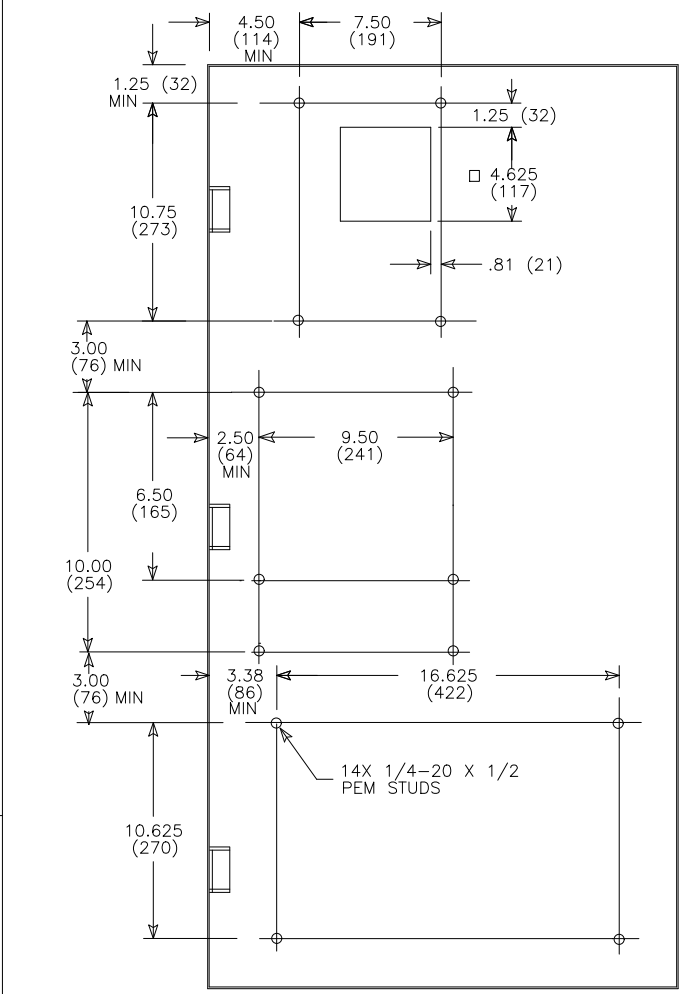
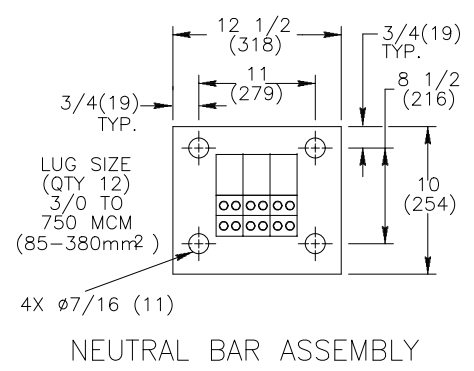
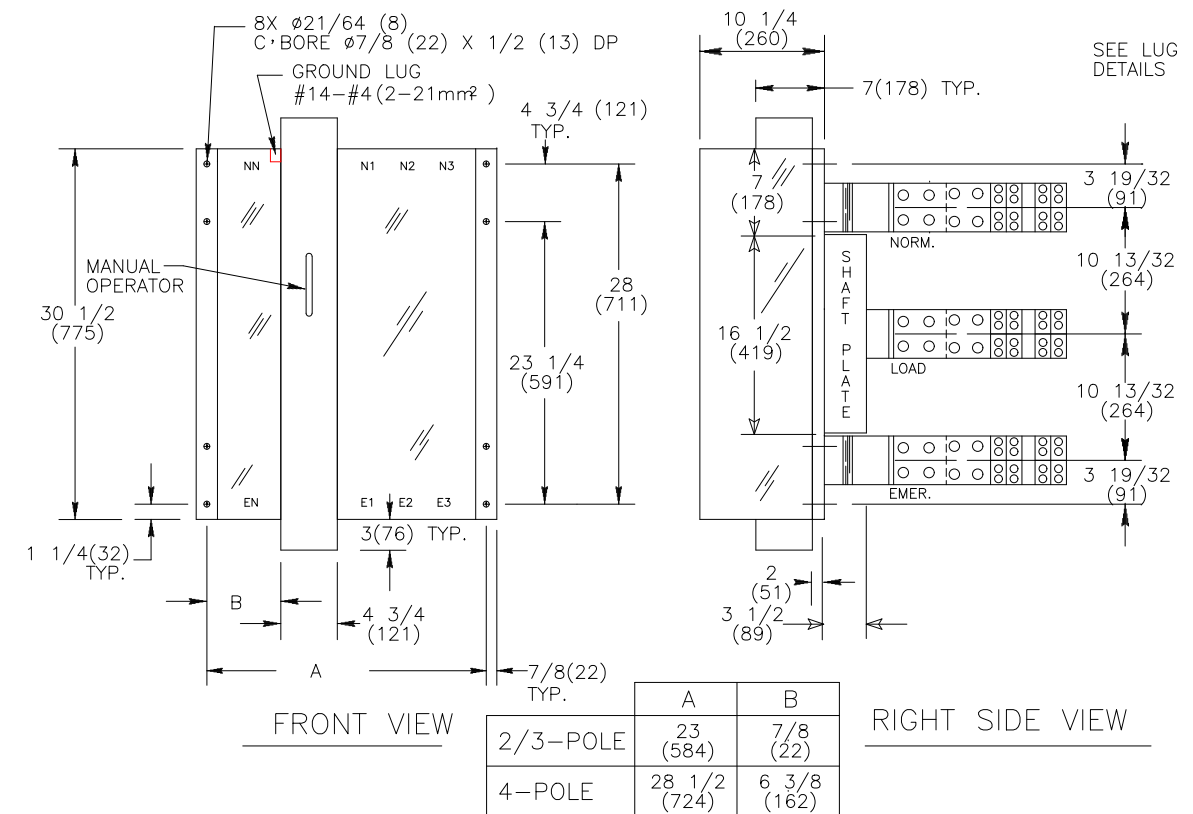
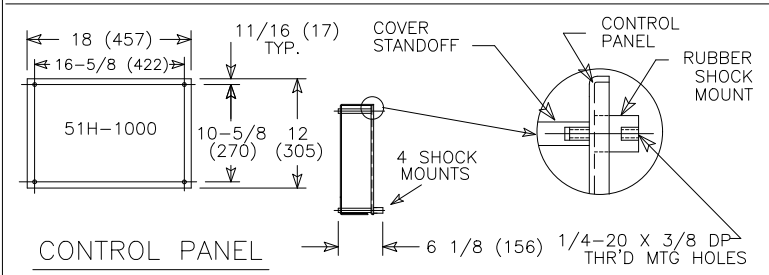


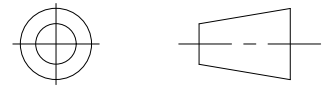
REVISIONS			
REV.	DESCRIPTION	DATE	APPROVED
1	C079254	10/18/19	GK MAS



- NOTES:
- FOR 2-POLE SWITCHES, OMIT CENTER POLE.
  - OPEN TYPE SWITCH SUPPLIED WITH 6 FT. (1.8m) LONG HARNESS BETWEEN POWER AND CONTROL PANELS. HARNESS EXITS FROM LOWER RIGHT CORNER OF POWER PANEL.
  - DO NOT RUN CABLES IN FRONT OF SWITCH. RUN ALL CABLES ON RIGHT SIDE.
  - ALL FRACTIONAL TOLERANCES  $\pm 1/64$  (0.4mm) UNLESS OTHERWISE SPECIFIED.
  - MAINTAIN ELECTRICAL CLEARANCE OF 1 (25mm) MIN. BETWEEN LIVE METAL PARTS AND GROUNDED METAL.
  - ALL DIMENSIONS ARE FOR REFERENCE ONLY AND SHOWN IN INCHES (MILLIMETERS).



THIRD ANGLE PROJECTION



**ABB PROPRIETARY AND CONFIDENTIAL INFORMATION**  
The information contained in the document has to be kept strictly confidential. Any unauthorized use, reproduction, distribution or disclosure to third parties is strictly forbidden.  
ABB reserves all rights regarding intellectual Property Rights.  
Copyright 2018 ABB. All rights reserved

SIGNATURES		DATE
MODEL	SG	8/17/98
DETAIL		
CHECKED		
ENGRG	SB	8/17/98
MFG		
QUALITY		
ISSUED		
DRAWING FILE:	52C-2012	
MODEL / ASSEMBLY FILE:	ZTGDK260-300 (2600-3000 AMP) 2,3,4 POLES	
# CTGs	$\ominus$ CRITICAL TO QUALITY CHARACTERISTIC	

**ABB**

TITLE  
**TRANSFER SWITCH  
REAR LUGS**

FIRST MADE FOR: ZTGDK260-300 (2600-3000 AMP) 2,3,4 POLES

SIZE	CAGE CODE	DWG NO
B		52C-2012

SCALE: N/A

SHEET 1 OF 1

AutoCad Generated