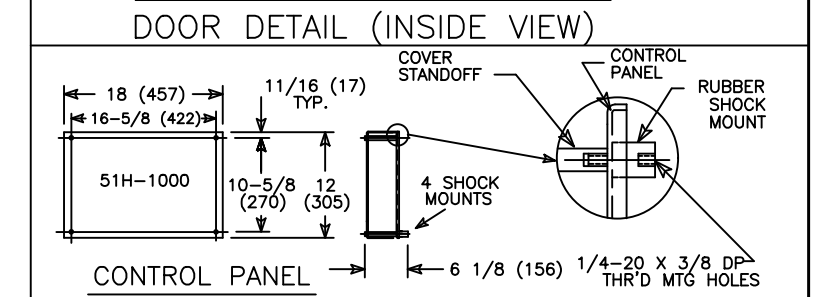
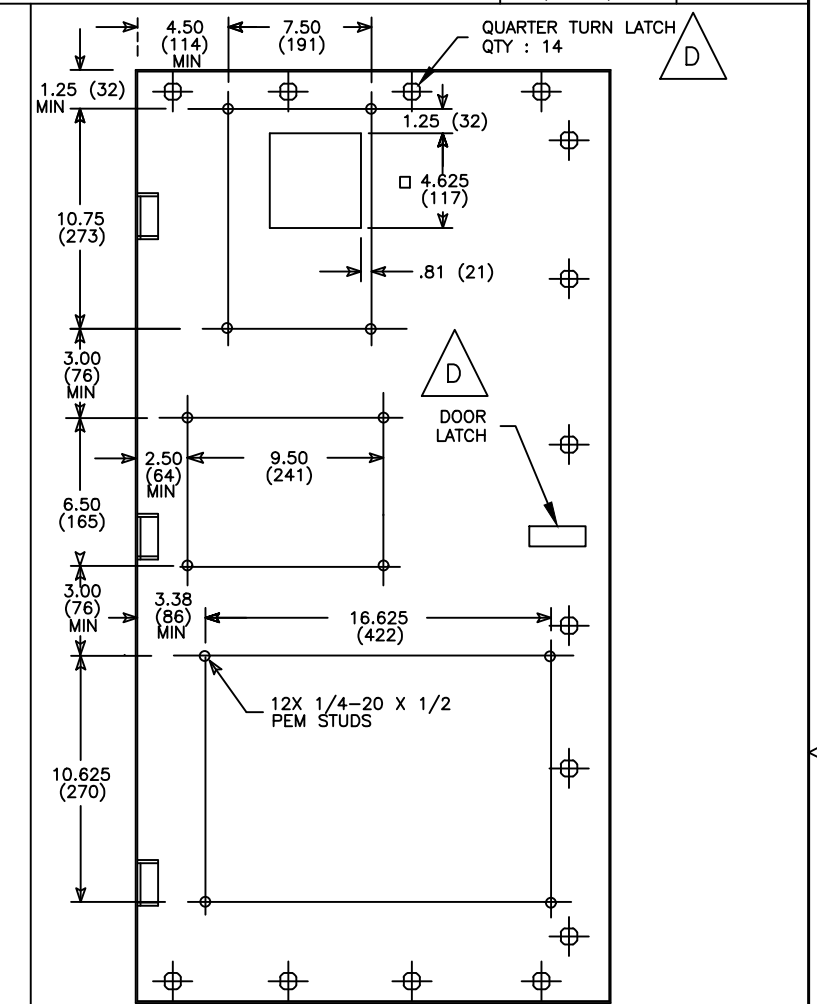
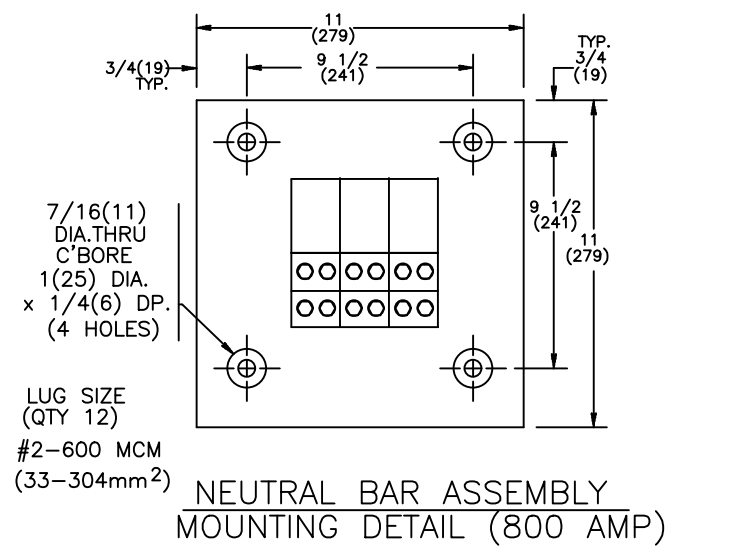


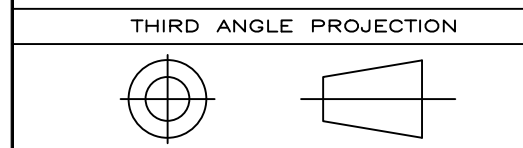
REVISIONS			
REV.	DESCRIPTION	DATE	APPROVED
1	C076273 UPDATED REBRANDING	10/10/19	AR MAS



	QTY.	LUG SIZES
800A	4	#2 - 600 MCM (33-304 MM²)



- NOTES:**
- FOR 2-POLE SWITCHES, OMIT CENTER POLE.
  - OPEN TYPE SWITCH SUPPLIED WITH 6 FT. (1,8m) LONG HARNESS BETWEEN POWER AND CONTROL PANELS. HARNESS EXITS FROM LOWER RIGHT CORNER OF POWER PANEL.
  - DO NOT RUN CABLES IN FRONT OF SWITCH RUN ALL CABLES ON RIGHT SIDE.
  - MAINTAIN ELECTRICAL CLEARANCE OF 1(25mm) MIN. BETWEEN LIVE METAL PARTS AND GROUNDED METAL.
  - DIMENSIONS FOR 3-POLE AND 4-POLE SWITCHES ARE IDENTICAL EXCEPT AS NOTED.
  - ALL DIMENSIONS ARE FOR REFERENCE ONLY AND SHOWN IN INCHES (MILLIMETERS).



**ABB PROPRIETARY AND CONFIDENTIAL INFORMATION**  
 The information contained in the document has to be kept strictly confidential. Any unauthorized use, reproduction, distribution or disclosure to third parties is strictly forbidden. ABB reserves all rights regarding intellectual Property Rights. Copyright 2018 ABB. All rights reserved.

SIGNATURES		DATE	
MODEL	GG	08/24/04	
DETAIL			
CHECKED		TITLE	
ENGRG	MF	<b>ABB</b> TRANSFER SWITCH FRONT LUGS	
MFG			
QUALITY			
ISSUED			
DRAWING FILE: 52c-2014.dwg		FIRST MADE FOR: ZTG2 800 AMP 2,3 4 POLES	
MODEL / ASSEMBLY FILE: ZTG2 800 AMP 2,3 4 POLES		SIZE	DWG NO
		B	52C-2014
# CTQs		SCALE: NA	SHEET 1 OF 1

AutoCad Generated

CRITICAL TO QUALITY CHARACTERISTIC