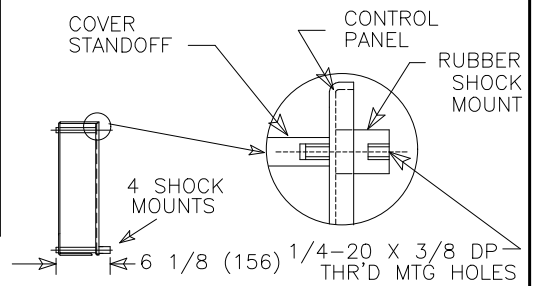
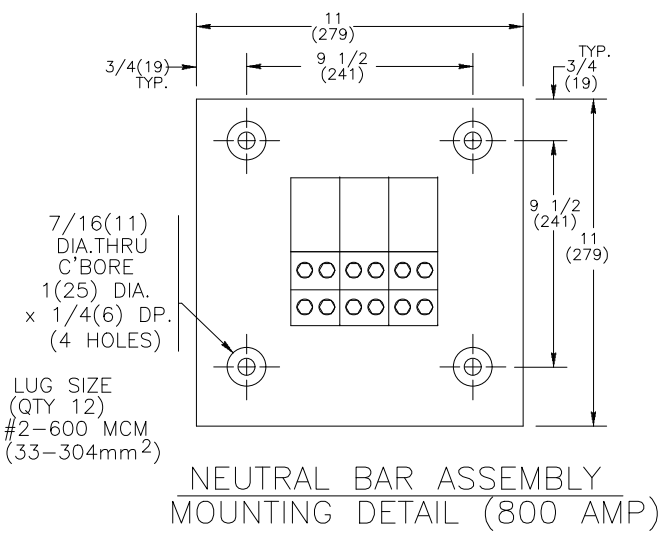
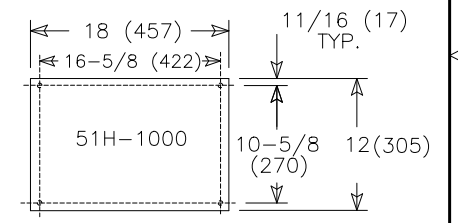
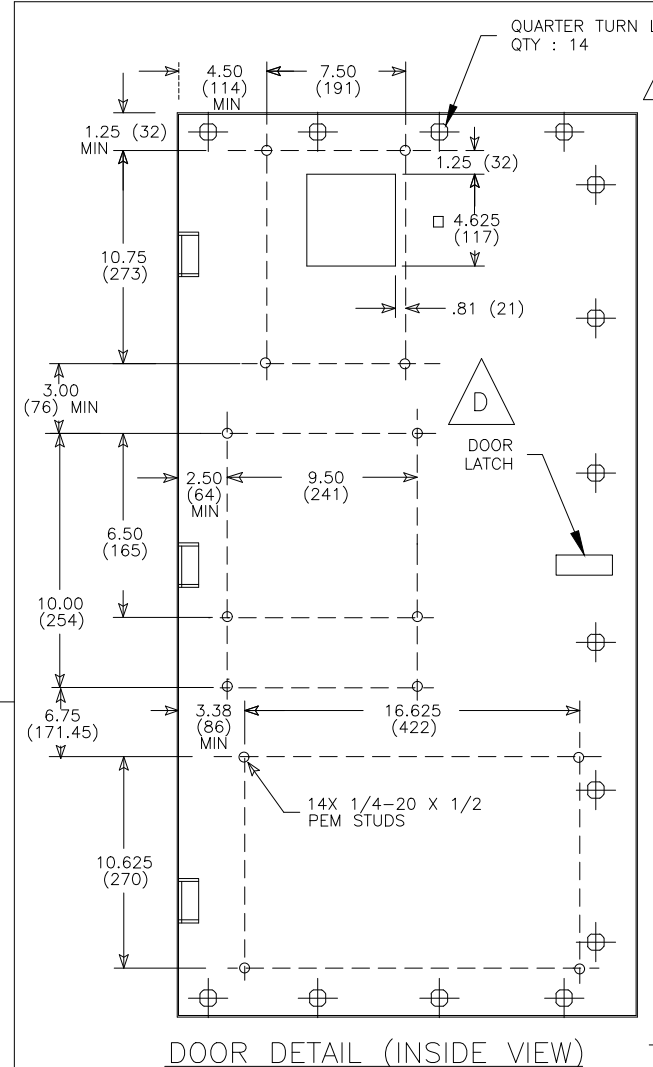


REVISIONS			
REV.	DESCRIPTION	DATE	APPROVED
1	C075076 UPDATED REBRANDING	08/29/19	AR MAS

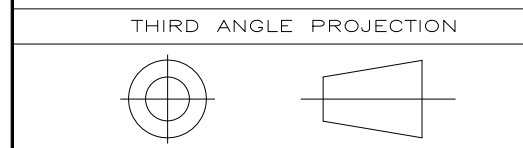
QTY.	LUG SIZES
800A	#2 - 600 MCM (33-304 MM <sup>2</sup> )

- NOTES:
- FOR 2-POLE SWITCHES, OMIT CENTER POLE.
  - OPEN TYPE SWITCH SUPPLIED WITH 6 FT. (1.8m) LONG HARNESS BETWEEN POWER AND CONTROL PANELS. HARNESS EXITS FROM LOWER RIGHT CORNER OF POWER PANEL.
  - DO NOT RUN CABLES IN FRONT OF SWITCH RUN ALL CABLES ON RIGHT SIDE.
  - MAINTAIN ELECTRICAL CLEARANCE OF 1(25mm) MIN. BETWEEN LIVE METAL PARTS AND GROUNDED METAL.
  - DIMENSIONS FOR 3-POLE AND 4-POLE SWITCHES ARE IDENTICAL EXCEPT AS NOTED.
  - ALL DIMENSIONS ARE FOR REFERENCE ONLY AND SHOWN IN INCHES (MILLIMETERS).



SIGNATURES	DATE
MODEL GG	08/24/04
DRAWING FILE: 52c-2015.dwg	
MODEL / ASSEMBLY FILE: ZTGD2 800 AMP 2,3 4 POLES	

TITLE	
TRANSFER SWITCH FRONT LUGS	
FIRST MADE FOR: ZTGD2 800 AMP 2,3 4 POLES	DWG NO
SIZE B	CAGE CODE
52C-2015	
# CTQs	SCALE: NA
CRITICAL TO QUALITY CHARACTERISTIC	SHEET 1 OF 1



**ABB PROPRIETARY AND CONFIDENTIAL INFORMATION**  
The information contained in the document has to be kept strictly confidential. Any unauthorized use, reproduction, distribution or disclosure to third parties is strictly forbidden. ABB reserves all rights regarding intellectual Property Rights. Copyright 2018 ABB. All rights reserved.

AutoCad Generated