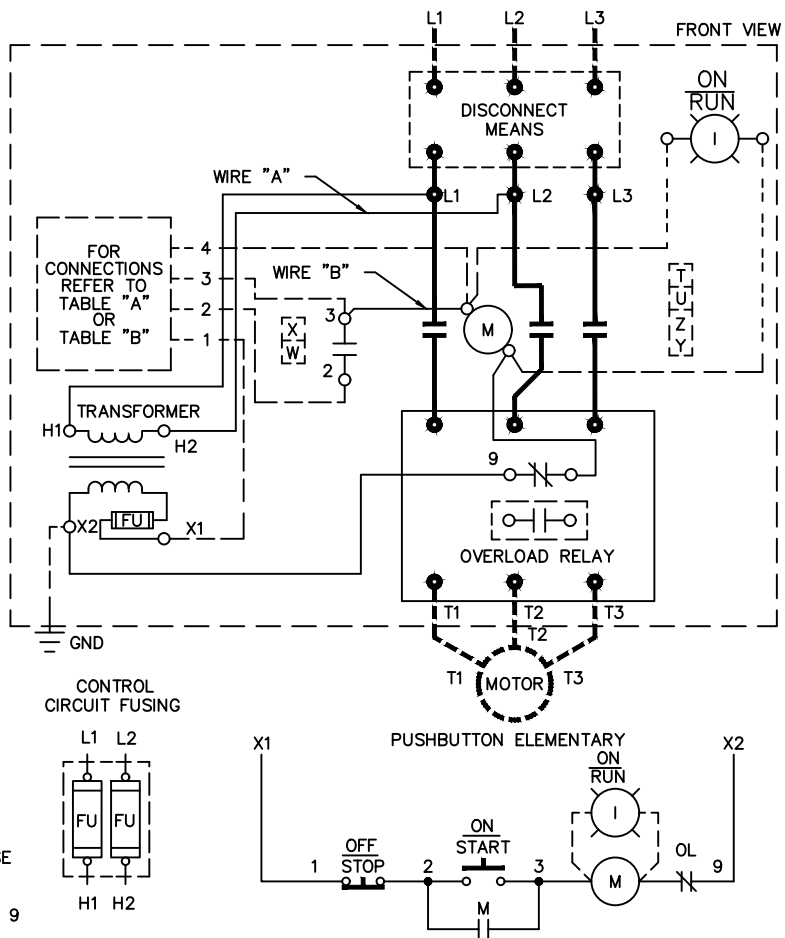
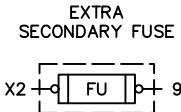


—NOMENCLATURE—
M—LINE CONTACTOR
OL—OVERLOAD RELAY
I—INDICATING LIGHT
FU—FUZE
X—INDICATES CONTACT CLOSED



TERMINAL TIGHTENING TORQUE (LB-IN)

| SIZE | LOAD SIDE | | LINE SIDE | | |
|------|------------|---------------|-----------|-----------|-------|
| | THERMAL OL | ELECTRONIC OL | CR306 | CR307,387 | CR308 |
| 2 | 50 | 20 | 50 | AS MARKED | 50 |
| 3 | 150 | 200 | 150 | AS MARKED | 50 |
| 4 | 200 | 200 | 200 | AS MARKED | 275 |

USE 75°C COPPER CONDUCTORS ONLY, FOR FIELD WIRING. TORQUE LINE AND LOAD TERMINALS AS SHOWN AT RIGHT:

NOTE: ADDITIONAL OVER-CURRENT PROTECTION MAY BE REQUIRED. REFER TO THE NATIONAL ELECTRICAL CODE OR LOCAL ELECTRICAL CODE AS REQUIRED.

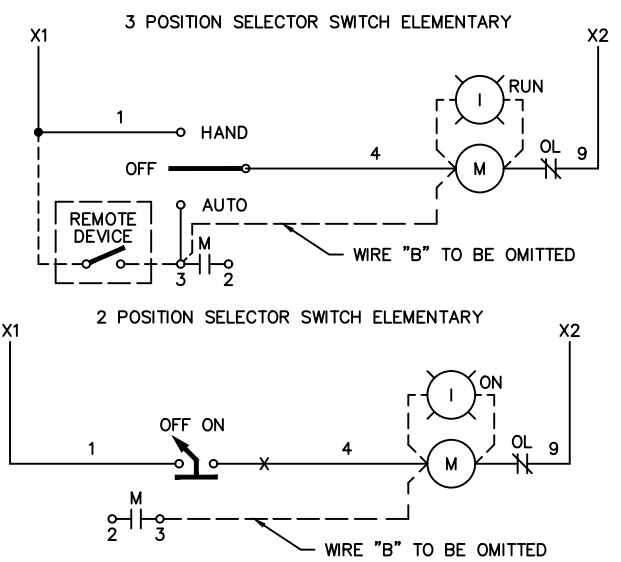
FOR 1-PHASE OPERATION USING
• SOLID STATE OVERLOAD RELAY
SEE GEH-6430 (sz 1,2) OR GEH-6431 (sz 3,4)
• THERMAL OVERLOAD RELAY
CHANGE CONNECTION WIRE "A" FROM L2 TO L3.
CONNECT LINE TO L1 AND L3 AND LOAD TO T1 AND T3.

FOR STARTER WITHOUT DISCONNECT MEANS — WIRE LINE DIRECT TO L1, L2 AND L3 ON STARTER.

FOR EXTRA AUXILIARY CONTACTS — A MAXIMUM OF 5 CONTACTS MAY BE ADDED AT POSITIONS T,U,W,X,Y & Z.

GROUND KIT

| | |
|------------------|---------------|
| 1/2-IN CONDUIT | 55-213403G001 |
| 3/4-IN CONDUIT | 55-213403G002 |
| 1-IN CONDUIT | 55-213403G003 |
| 1 1/4-IN CONDUIT | 55-213403G004 |
| 1 1/2-IN CONDUIT | 55-213403G005 |
| 2-IN CONDUIT | 55-213403G006 |
| 2 1/2-IN CONDUIT | 55-213403G007 |
| 3-IN CONDUIT | 55-213403G008 |



WIRING DIAGRAM
FVNR SIZE 2, 3 & 4

| THIRD ANGLE | SHEET# | DWG NO. | DATE | REV |
|-------------|--------|-----------|-------|-----|
| | 1 of 1 | 55-179655 | 02/21 | 16 |