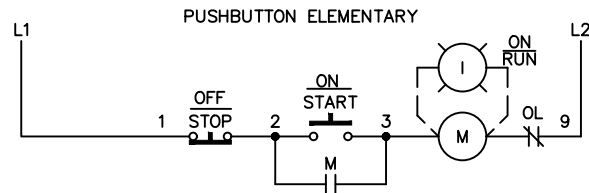
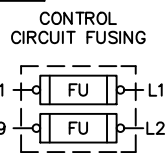


- GROUND KIT**
- 1/2-IN CONDUIT
 - 3/4-IN CONDUIT
 - 1-IN CONDUIT
 - 1 1/4-IN CONDUIT
 - 1 1/2-IN CONDUIT
 - 2-IN CONDUIT
 - 2 1/2-IN CONDUIT
 - 3-IN CONDUIT

- 55-213403G001
- 55-213403G002
- 55-213403G003
- 55-213403G004
- 55-213403G005
- 55-213403G006
- 55-213403G007
- 55-213403G008



USE 75°C COPPER CONDUCTORS ONLY, FOR FIELD WIRING. TORQUE LINE AND LOAD TERMINALS AS SHOWN AT RIGHT:

SIZE	LOAD SIDE		LINE SIDE		
	THERMAL OL	ELECTRONIC OL	CR306	CR307,387	CR308
2	50	20	50	AS MARKED	50
3	150	200	150	AS MARKED	50
4	200	200	200	AS MARKED	275

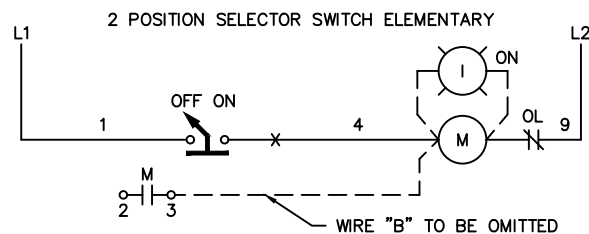
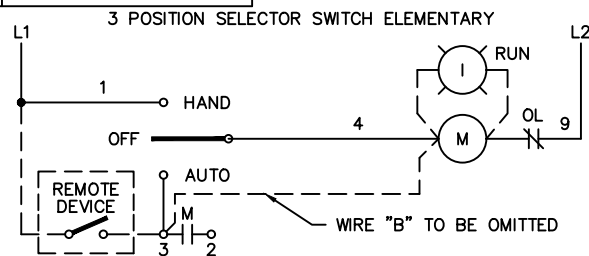
NOTE: ADDITIONAL OVER-CURRENT PROTECTION MAY BE REQUIRED. REFER TO THE NATIONAL ELECTRICAL CODE OR LOCAL ELECTRICAL CODE AS REQUIRED.

- FOR 1-PHASE OPERATION USING
- SOLID STATE OVERLOAD RELAY SEE GEH-6430 (sz 1,2) OR GEH-6431 (sz 3,4)
 - THERMAL OVERLOAD RELAY CHANGE CONNECTION WIRE "A" FROM L2 TO L3. CONNECT LINE TO L1 AND L3 AND LOAD TO T1 AND T3.

FOR STARTER WITHOUT DISCONNECT MEANS - WIRE LINE DIRECT TO L1, L2 AND L3 ON STARTER.

FOR EXTRA AUXILIARY CONTACTS- A MAXIMUM OF 5 CONTACTS MAY BE ADDED AT POSITIONS T,U,W,X,Y,& Z.

FOR SEPARATE CONTROL SOURCE - OMIT WIRE "A" AND "C" AND CONNECT SEPARATE CONTROL SOURCE TO N/C CONTACT ON OL AND TO 1 ON PILOT DEVICE. WIRE "A" & "C" IS OMITTED AT FACTORY ON ALL STARTERS WITH A COIL VOLTAGE OF 120V OR LESS.



ABB

WIRING DIAGRAM
 FVNR SIZE 2, 3 & 4

THIRD ANGLE	SHEET#	DWG NO.	DATE	REV
	1 of 1	55-179663	02/21	14