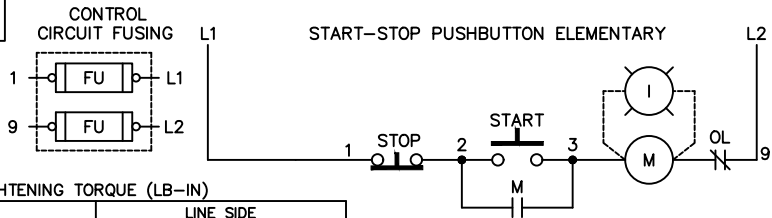
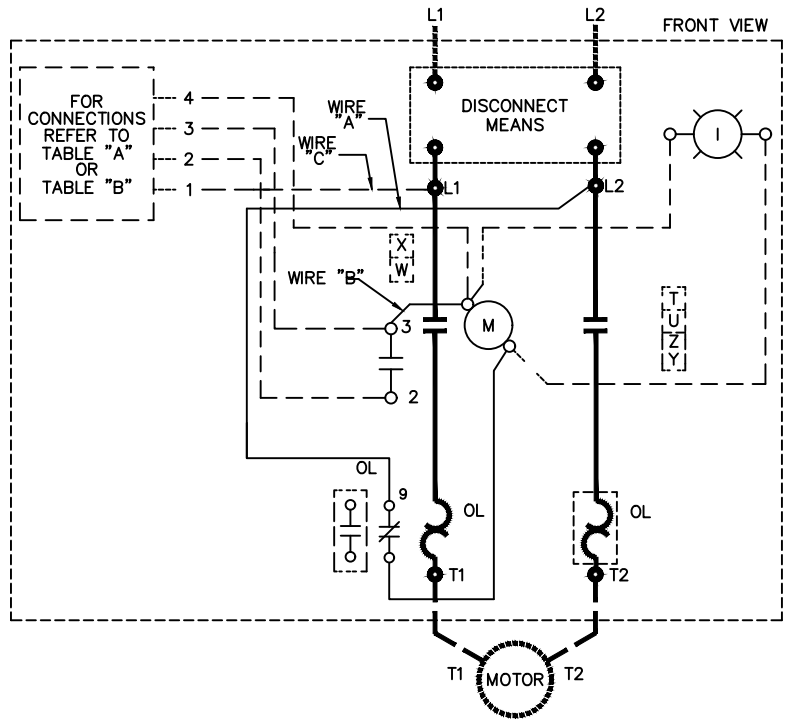


TABLE A STANDARD PILOT DEVICES	TABLE B OIL-TIGHT PILOT DEVICES
START-STOP 	START-STOP
PUSHBUTTONS OFF ON (OMIT WIRE "B")	PUSHBUTTONS OFF ON (OMIT WIRE "B")
2 POSITION SELECTOR SWITCH HAND ○ RED 1 OFF ○ WHITE 3 AUTO ○ BLACK 4 (OMIT WIRE "B")	2 POSITION SELECTOR SWITCH HAND OFF AUTO 1 OFF ○ WHITE 3 AUTO ○ BLACK 4 (OMIT WIRE "B")
3 POSITION SELECTOR SWITCH REMOTE DEVICE 1 ○ 3 	3 POSITION SELECTOR SWITCH REMOTE DEVICE 1 ○ 3

-NOMENCLATURE-
M-LINE CONTACTOR
I-INDICATING LIGHT
FU-FUSE
X-INDICATES CONTACT CLOSED



TERMINAL TIGHTENING TORQUE (LB-IN)

SIZE	LOAD SIDE		LINE SIDE		
	THERMAL OL	ELECTRONIC OL	CR306	CR307,387	CR308
2		20	50	AS MARKED	50
3	150	200	150	AS MARKED	50
4	200	200	200	AS MARKED	275

USE 75°C COPPER CONDUCTORS ONLY, FOR FIELD WIRING. TORQUE LINE AND LOAD TERMINALS AS SHOWN AT RIGHT:

NOTE: REFER TO THE NATIONAL ELECTRICAL CODE ADDITIONAL CONTROL CIRCUIT OVER-CURRENT PROTECTION MAY BE REQUIRED

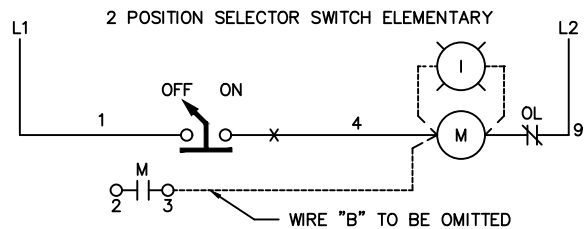
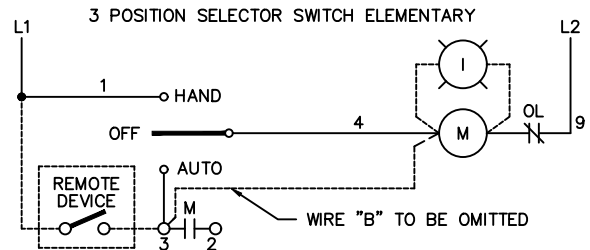
FOR STARTER WITHOUT DISCONNECT MEANS - WIRE LINE DIRECT TO L1 AND L2 ON STARTER.

FOR EXTRA AUXILIARY CONTACTS- A MAXIMUM OF 5 CONTACTS MAY BE ADDED AT POSITIONS T,U,W,X,Y & Z

FOR SEPARATE CONTROL SOURCE - OMIT WIRE "A" & "C" AND CONNECT SEPARATE CONTROL SOURCE TO TO 9 ON OL AND TO 1 ON PILOT DEVICE. WIRE "A" & "C" IS OMITTED AT FACTORY ON ALL STARTERS WITH A COIL VOLTAGE OF 120V OR LESS.

FOR CSA - GROUND KIT

1/2 IN CONDUIT	55-213403G001
3/4 IN CONDUIT	55-213403G002
1 IN CONDUIT	55-213403G003
1 1/4 IN CONDUIT	55-213403G004
1 1/2 IN CONDUIT	55-213403G005
2 IN CONDUIT	55-213403G006
2 1/2 IN CONDUIT	55-213403G007



ABB

WIRING DIAGRAM
FVNR SIZE 2, 3 & 4

THIRD ANGLE	SHEET#	DWG NO.	DATE	REV
	1 of 1	55-179689	02/21	09