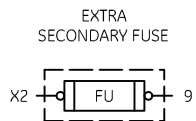


| TABLE A  | TABLE B  |
|--|--|
| STANDARD PILOT DEVICES   | OIL-TIGHT PILOT DEVICES  |
| <b>START-STOP</b><br>  | <b>START-STOP</b><br>  |
| <b>PUSHBUTTONS</b><br><b>OFF ON</b><br><br>( OMIT WIRE "B" )   | <b>PUSHBUTTONS</b><br><b>OFF ON</b><br><br>( OMIT WIRE "B" )   |
| <b>2 POSITION SELECTOR SWITCH</b><br><b>HAND</b> (RED) 1<br><b>OFF</b> (WHITE) 3<br><b>AUTO</b> (BLACK) 4<br><br>( OMIT WIRE "B" ) | <b>2 POSITION SELECTOR SWITCH</b><br><b>HAND</b> (OFF) 1<br><b>AUTO</b> (X) 3<br><br>( OMIT WIRE "B" ) |
| <b>REMOTE DEVICE</b> 1 3<br><br><b>3 POSITION SELECTOR SWITCH</b>  | <b>REMOTE DEVICE</b> 1 3<br><br><b>3 POSITION SELECTOR SWITCH</b>                                      |

USE 75°C COPPER CONDUCTORS ONLY, FOR FIELD WIRING.

-NOMENCLATURE-  
M-LINE CONTACTOR  
I-INDICATING LIGHT  
FU-FUSE  
X-INDICATES CONTACT CLOSED

| TORQUE LINE AND LOAD TERMINALS AS SHOWN AT RIGHT | CR305<br>CR307<br>CR308<br>CR387 | LINE<br>20 LB-IN<br>AS MARKED<br>35 LB-IN<br>AS MARKED | LOAD<br>20 LB-IN<br>20 LB-IN<br>20 LB-IN<br>20 LB-IN |
|--|----------------------------------|--|--|
|--|----------------------------------|--|--|



FOR CSA - GND KIT

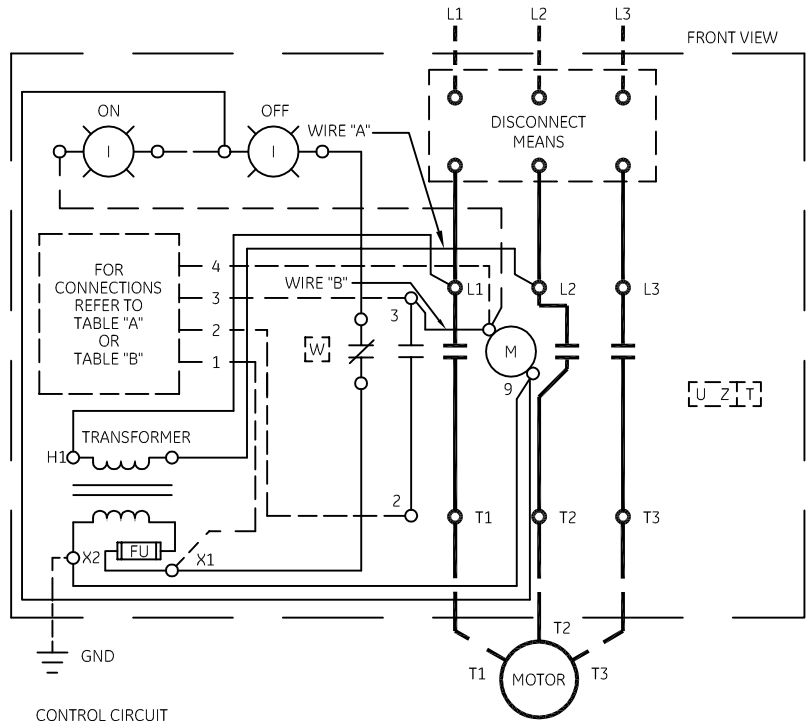
|                |               |
|----------------|---------------|
| 1/2-IN CONDUIT | 55-213403G001 |
| 3/4-IN CONDUIT | 55-213403G002 |

NOTE: REFER TO THE NATIONAL ELECTRICAL CODE. ADDITIONAL CONTROL CIRCUIT OVER-CURRENT PROTECTION MAY BE REQUIRED.

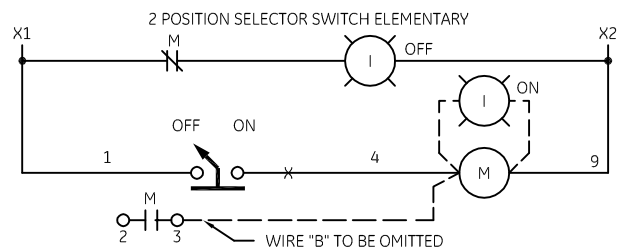
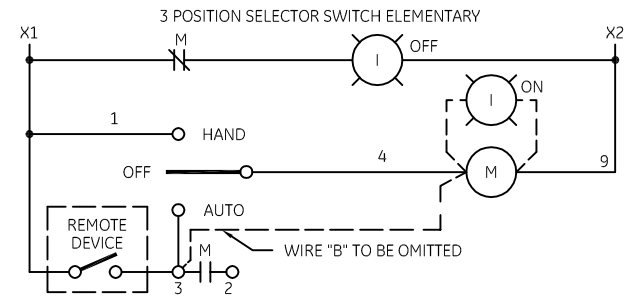
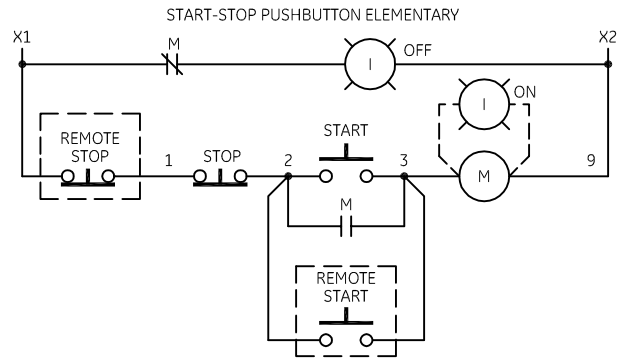
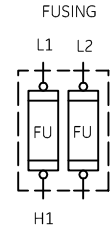
FOR 1-PHASE OPERATION - CHANGE CONNECTION OF WIRE "A" FROM L2 TO L3. CONNECT LINE TO L1 AND L3 AND LOAD TO T1 AND T3.

FOR CONTACTOR WITHOUT DISCONNECT MEANS - WIRE LINE DIRECT TO L1, L2 AND L3 ON CONTACTOR.

FOR EXTRA AUXILIARY CONTACTS- A MAXIMUM OF 3 CONTACTS MAY BE ADDED AT POSITIONS T, U, W & Z FOR SIZE 0 & 1 ONLY.



CONTROL CIRCUIT FUSING



imagination at work

WIRING DIAGRAM  
FVNR SIZE 00, 0 & 1

| AN #    | THIRD ANGLE PROJECTION | SHEET # | DWG NO.   | DATE       | REV |
|---------|------------------------|---------|-----------|------------|-----|
| 09-9111 |                        | 1 OF 1  | 55-188080 | 08/06/2009 | 4   |