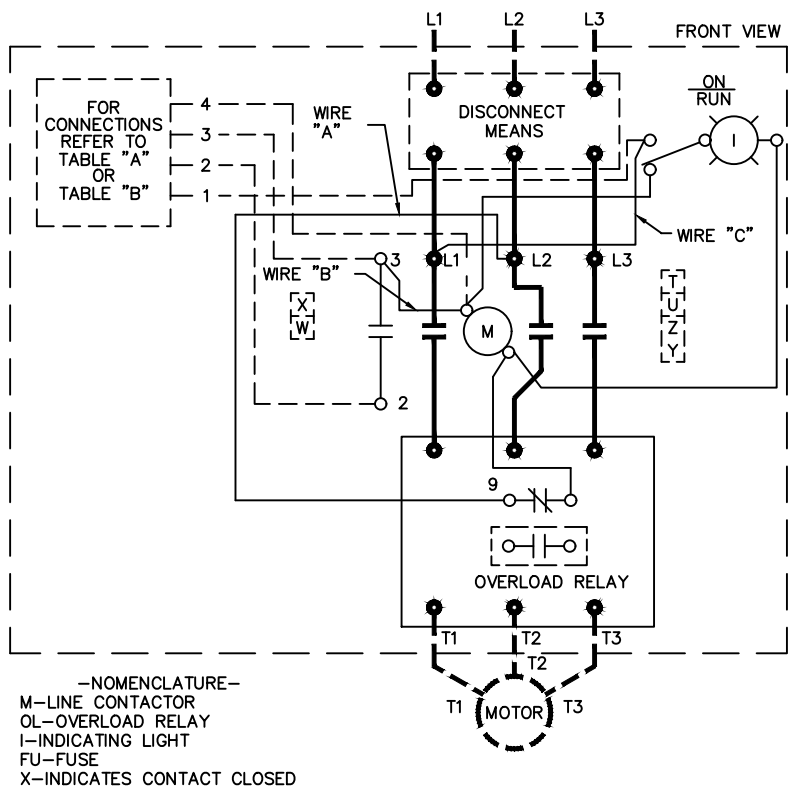


TABLE A STANDARD PILOT DEVICES	TABLE B OIL-TIGHT PILOT DEVICES
<b>ON-OFF START-STOP</b> 	<b>ON-OFF START-STOP</b> 
<b>PUSHBUTTONS</b> <b>OFF ON</b>  ( OMIT WIRE "B" )	<b>PUSHBUTTONS</b> <b>OFF ON</b>  ( OMIT WIRE "B" )
<b>2 POSITION SELECTOR SWITCH</b> <b>HAND OFF AUTO</b>  ( OMIT WIRE "B" )	<b>2 POSITION SELECTOR SWITCH</b> <b>HAND OFF AUTO</b>  ( OMIT WIRE "B" )
<b>REMOTE DEVICE</b> 	<b>REMOTE DEVICE</b> 



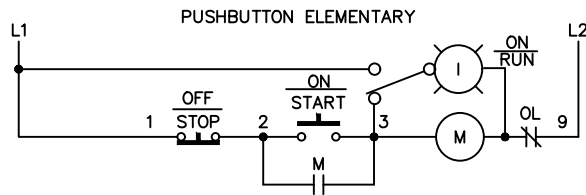
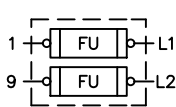
-NOMENCLATURE-  
M-LINE CONTACTOR  
OL-OVERLOAD RELAY  
I-INDICATING LIGHT  
FU-FUSE  
X-INDICATES CONTACT CLOSED

**GROUND KIT**

- 1/2-IN CONDUIT
- 3/4-IN CONDUIT
- 1-IN CONDUIT
- 1 1/4-IN CONDUIT
- 1 1/2-IN CONDUIT
- 2-IN CONDUIT
- 2 1/2-IN CONDUIT
- 3-IN CONDUIT

- 55-213403G001
- 55-213403G002
- 55-213403G003
- 55-213403G004
- 55-213403G005
- 55-213403G006
- 55-213403G007
- 55-213403G008

**CONTROL CIRCUIT FUSING**



USE 75°C COPPER CONDUCTORS ONLY, FOR FIELD WIRING. TORQUE LINE AND LOAD TERMINALS AS SHOWN AT RIGHT:

SIZE	TERMINAL TIGHTENING TORQUE (LB-IN)		
	LOAD SIDE	LINE SIDE	LINE SIDE
2	THERMAL OL 50	ELECTRONIC OL 20	CR306 50
3	150	200	CR307,387 AS MARKED 50
4	200	200	CR308 AS MARKED 275

NOTE: ADDITIONAL OVER-CURRENT PROTECTION MAY BE REQUIRED. REFER TO THE NATIONAL ELECTRICAL CODE OR LOCAL ELECTRICAL CODE AS REQUIRED.

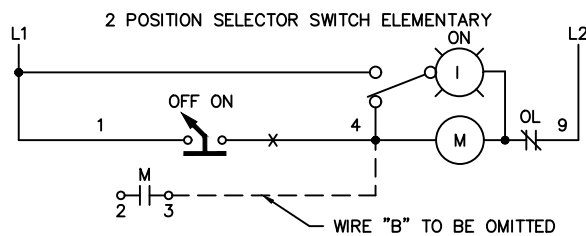
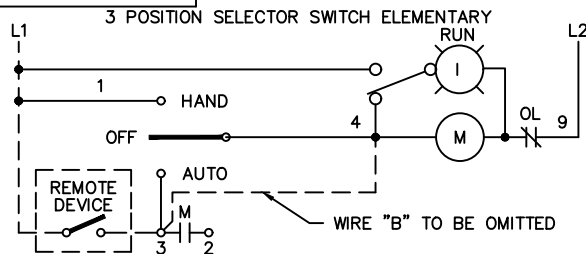
**FOR 1-PHASE OPERATION USING**

- SOLID STATE OVERLOAD RELAY  
SEE GEH-6430 (sz 1,2) OR GEH-6431 (sz 3,4)
- THERMAL OVERLOAD RELAY  
CHANGE CONNECTION WIRE "A" FROM L2 TO L3.  
CONNECT LINE TO L1 AND L3 AND LOAD TO T1 AND T3.

FOR STARTER WITHOUT DISCONNECT MEANS - WIRE LINE DIRECT TO L1, L2 AND L3 ON STARTER.

FOR EXTRA AUXILIARY CONTACTS- A MAXIMUM OF 5 CONTACTS MAY BE ADDED AT POSITIONS T,U,W,X,Y,& Z.

FOR SEPARATE CONTROL SOURCE - OMIT WIRES "A" & "C" AND CONNECT SEPARATE CONTROL SOURCE TO N/C CONTACT ON OL AND TO 1 ON PILOT DEVICE. WIRES "A" & "C" ARE OMITTED AT FACTORY ON ALL STARTERS WITH A COIL VOLTAGE OF 120V OR LESS.



**ABB**

**WIRING DIAGRAM  
FVNR SIZE 2, 3 & 4**

THIRD ANGLE	SHEET#	DWG NO.	DATE	REV
	1 of 1	55-188823	02/21	12