

NOMENCLATURE
 M-LINE CONTACTOR
 FCC-FUSED CONTROL CIRCUIT
 I-INDICATING LIGHT

ON-OFF-AUTO IS AN ALTERNATE MARKING FOR HAND-OFF-AUTO

USE 75°C COPPER CONDUCTORS ONLY, FOR FIELD WIRING. TORQUE LINE AND LOAD TERMINALS 20 IN-LBS OR AS MARKED.

NOTE: POWER POLES MAY BE CONVERTED TO NORMALLY CLOSED

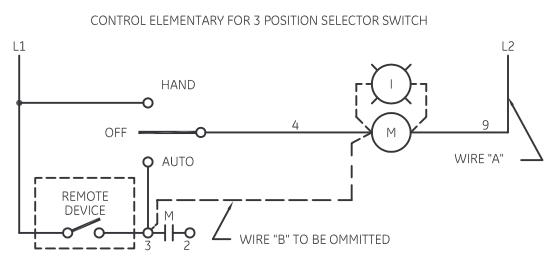
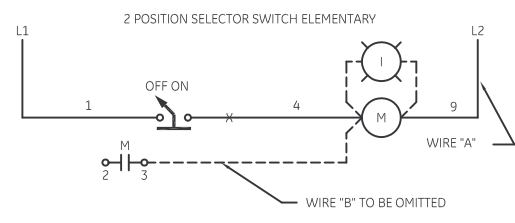
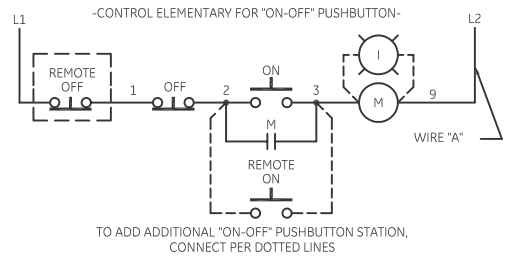
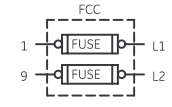
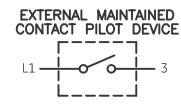
NOTE: ADDITIONAL OVER-CURRENT PROTECTION MAY BE REQUIRED. REFER TO THE NATIONAL ELECTRICAL CODE OR LOCAL ELECTRICAL CODE AS REQUIRED.

FOR SEPARATE CONTROL SOURCE-OMIT WIRE "A" AND CONNECT SEPARATE CONTROL SOURCE TO 9 ON COIL AND TO 1 ON PILOT DEVICE. WIRE "A" IS OMITTED AT FACTORY ON ALL CONTACTORS WITH A COIL VOLTAGE OF 120V OR LESS.

FOR EXTRA AUXILIARY CONTACTS - A MAXIMUM OF 4 CONTACTS MAY BE ADDED AT POSITIONS T,U,W,Y, & Z.

HOLDING INTERLOCK MAY BE OMITTED ON FORMS WITHOUT PUSHBUTTONS.

| GROUND KIT | |
|------------------|---------------|
| 1/2-IN CONDUIT | 55-213403G001 |
| 3/4-IN CONDUIT | 55-213403G002 |
| 1-IN CONDUIT | 55-213403G003 |
| 1 1/4-IN CONDUIT | 55-213403G004 |
| 1 1/2-IN CONDUIT | 55-213403G005 |
| 2-IN CONDUIT | 55-213403G006 |
| 2 1/2-IN CONDUIT | 55-213403G007 |
| 3-IN CONDUIT | 55-213403G008 |



GE imagination at work

WIRING DIAGRAM
 CR360L LIGHTING CONTACTOR

| | | | | | |
|---------|------------------------|---------|-----------|------------|-----|
| AN # | THIRD ANGLE PROJECTION | SHEET # | DWG NO. | DATE | REV |
| 09-9114 | | 1 OF 1 | 55-193050 | 08/27/2009 | 11 |