

NOMENCLATURE

M-LINE CONTACTOR
 FCC-FUSED CONTROL CIRCUIT
 I-INDICATING LIGHT

ON-OFF-AUTO IS AN
 ALTERNATE MARKING
 FOR HAND-OFF-AUTO

USE 75°C COPPER
 CONDUCTORS ONLY, FOR
 FIELD WIRING. TORQUE
 LINE AND LOAD TERMINALS
 AS MARKED OR AS SHOWN
 AT RIGHT:

RATING	TORQUE
60A	50 LB-IN
100A	150 LB-IN
200A	250 LB-IN
300A	300 LB-IN

NOTE: ADDITIONAL OVER-CURRENT PROTECTION
 MAY BE REQUIRED. REFER TO THE
 NATIONAL ELECTRICAL CODE OR LOCAL
 ELECTRICAL CODE AS REQUIRED.

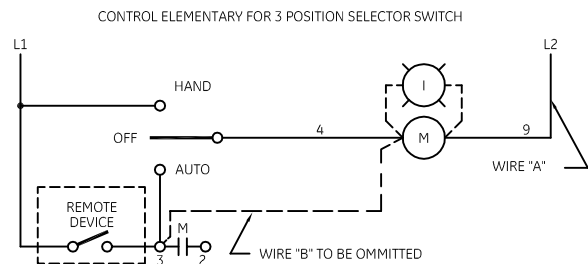
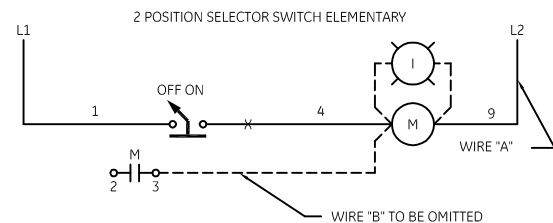
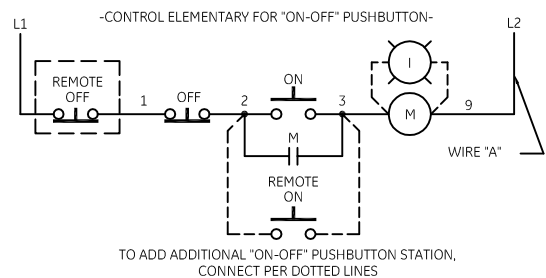
FOR SEPARATE CONTROL SOURCE-OMIT WIRE "A"
 AND CONNECT SEPARATE CONTROL SOURCE TO
 9 ON COIL AND TO 1 ON PILOT DEVICE.
 WIRE "A" IS OMITTED AT FACTORY ON ALL CONTACTORS
 WITH A COIL VOLTAGE OF 120V OR LESS.

FOR EXTRA AUXILIARY CONTACTS - A MAXIMUM OF 5
 CONTACTS MAY BE ADDED AT POSITIONS T, U, W, X, Y, & Z.

HOLDING INTERLOCK MAY BE OMITTED
 ON FORMS WITHOUT PUSHBUTTONS.

GROUND KIT

1/2-IN CONDUIT	55-213403G001
3/4-IN CONDUIT	55-213403G002
1-IN CONDUIT	55-213403G003
1 1/4-IN CONDUIT	55-213403G004
1 1/2-IN CONDUIT	55-213403G005
2-IN CONDUIT	55-213403G006
2 1/2-IN CONDUIT	55-213403G007
3-IN CONDUIT	55-213403G008



imagination at work

WIRING DIAGRAM CR360L LIGHTING CONTACTOR

AN #	THIRD ANGLE PROJECTION	SHEET #
09-9107		1 OF 1

DWG NO.	DATE	REV
55-193053	07/15/2009	8