

TABLE A STANDARD PILOT DEVICES	TABLE B OIL-TIGHT PILOT DEVICES
START-STOP 	START-STOP
PUSHBUTTONS 	PUSHBUTTONS
(OMIT WIRE "B") 2 POSITION SELECTOR SWITCH 	(OMIT WIRE "B") 2 POSITION SELECTOR SWITCH
(OMIT WIRE "B") 3 POSITION SELECTOR SWITCH 	(OMIT WIRE "B") 3 POSITION SELECTOR SWITCH

FOR 1-PHASE OPERATION USING
 • SOLID STATE OVERLOAD RELAY
 SEE GEH-6430(sz 1,2) OR GEH-6431 (sz 3,4)
 • THERMAL OVERLOAD RELAY
 CHANGE CONNECTION WIRE "A" FROM L2 TO L3.
 CONNECT LINE TO L1 AND L3 AND LOAD TO T1 AND T3.

	LINE	LOAD
TORQUE LINE AND LOAD TERMINALS AS SHOWN AT RIGHT	CR306 20 LB-IN	20 LB-IN
	CR307 AS MARKED	20 LB-IN
	CR308 35 LB-IN	20 LB-IN
	CR387 AS MARKED	20 LB-IN

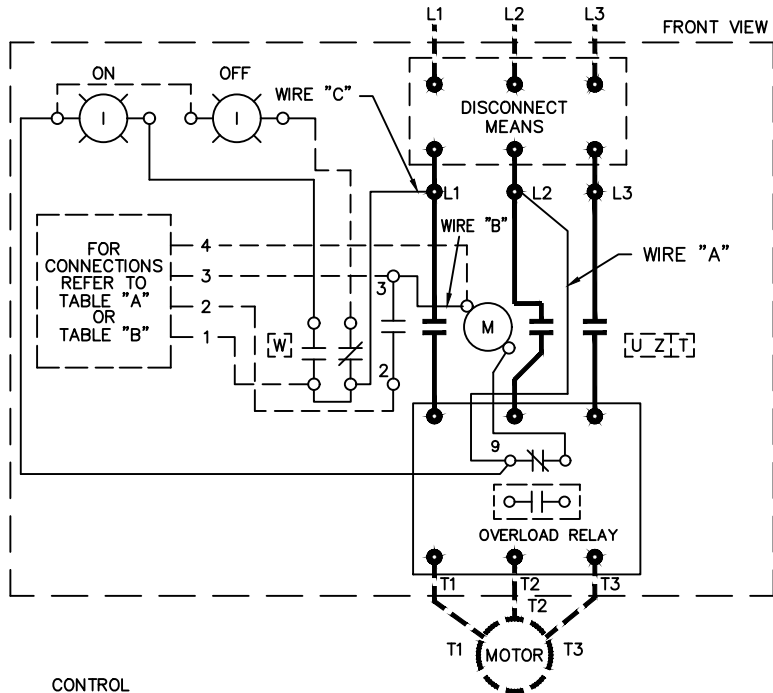
FOR SEPARATE CONTROL SOURCE - OMIT WIRES "A" & "C"
 AND CONNECT SEPARATE CONTROL SOURCE TO N/C CONTACT ON OL AND TO 1 ON PILOT DEVICE.
 WIRES "A" & "C" ARE OMITTED AT FACTORY ON ALL STARTERS WITH A COIL VOLTAGE OF 120V OR LESS.

NOTE: ADDITIONAL OVER-CURRENT PROTECTION
 MAY BE REQUIRED. REFER TO THE NATIONAL ELECTRICAL CODE OR LOCAL ELECTRICAL CODE AS REQUIRED.

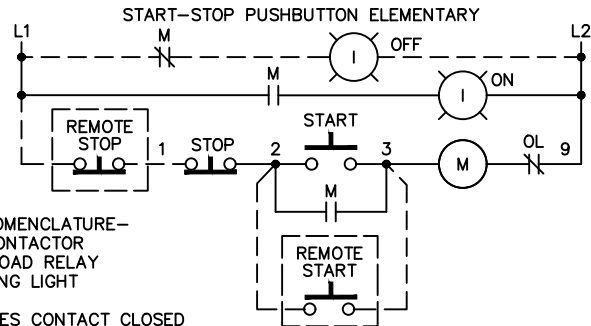
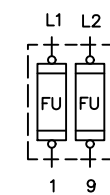
FOR STARTER WITHOUT DISCONNECT MEANS - WIRE LINE DIRECT TO L1, L2 AND L3 ON STARTER.

FOR EXTRA AUXILIARY CONTACTS- A MAXIMUM OF 2 CONTACTS MAY BE ADDED AT POSITIONS T,U,W,&Z FOR SIZE 0 & 1 ONLY.

GROUND KIT	
1/2-IN CONDUIT	55-213403G001
3/4-IN CONDUIT	55-213403G002
1-IN CONDUIT	55-213403G003
1 1/4-IN CONDUIT	55-213403G004
1 1/2-IN CONDUIT	55-213403G005
2-IN CONDUIT	55-213403G006
2 1/2-IN CONDUIT	55-213403G007
3-IN CONDUIT	55-213403G008

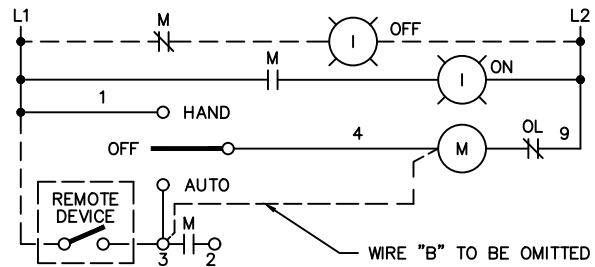


CONTROL CIRCUIT FUSING

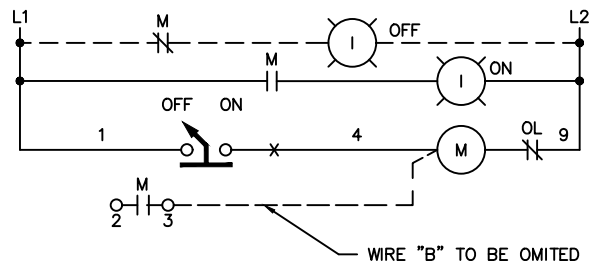


-NOMENCLATURE-
 M-LINE CONTACTOR
 OL-OVERLOAD RELAY
 I-INDICATING LIGHT
 FU-FUSE
 X-INDICATES CONTACT CLOSED

3 POSITION SELECTOR SWITCH ELEMENTARY



2 POSITION SELECTOR SWITCH ELEMENTARY



ABB

WIRING DIAGRAM
 FVNR SIZE 00, 0 & 1

THIRD ANGLE	SHEET#	DWG NO.	DATE	REV
	1 of 1	55-196144	02/21	07