

TABLE A STANDARD PILOT DEVICES	TABLE B OIL-TIGHT PILOT DEVICES
<b>START-STOP</b> 	<b>START-STOP</b> 
<b>PUSHBUTTONS</b> 	<b>PUSHBUTTONS</b> 
( OMIT WIRE "B" ) <b>2 POSITION SELECTOR SWITCH</b> 	( OMIT WIRE "B" ) <b>2 POSITION SELECTOR SWITCH</b> 
( OMIT WIRE "B" ) <b>3 POSITION SELECTOR SWITCH</b> 	( OMIT WIRE "B" ) <b>3 POSITION SELECTOR SWITCH</b> 

-NOMENCLATURE-  
M-LINE CONTACTOR  
OL-OVERLOAD RELAY  
I-INDICATING LIGHT  
FU-FUSE  
X-INDICATES CONTACT CLOSED

NOTE: ADDITIONAL OVER-CURRENT PROTECTION  
MAY BE REQUIRED. REFER TO THE  
NATIONAL ELECTRICAL CODE OR LOCAL  
ELECTRICAL CODE AS REQUIRED.

**GROUND KIT**

1/2-IN CONDUIT	55-213403G001
3/4-IN CONDUIT	55-213403G002
1-IN CONDUIT	55-213403G003
1 1/4-IN CONDUIT	55-213403G004
1 1/2-IN CONDUIT	55-213403G005
2-IN CONDUIT	55-213403G006
2 1/2-IN CONDUIT	55-213403G007
3-IN CONDUIT	55-213403G008

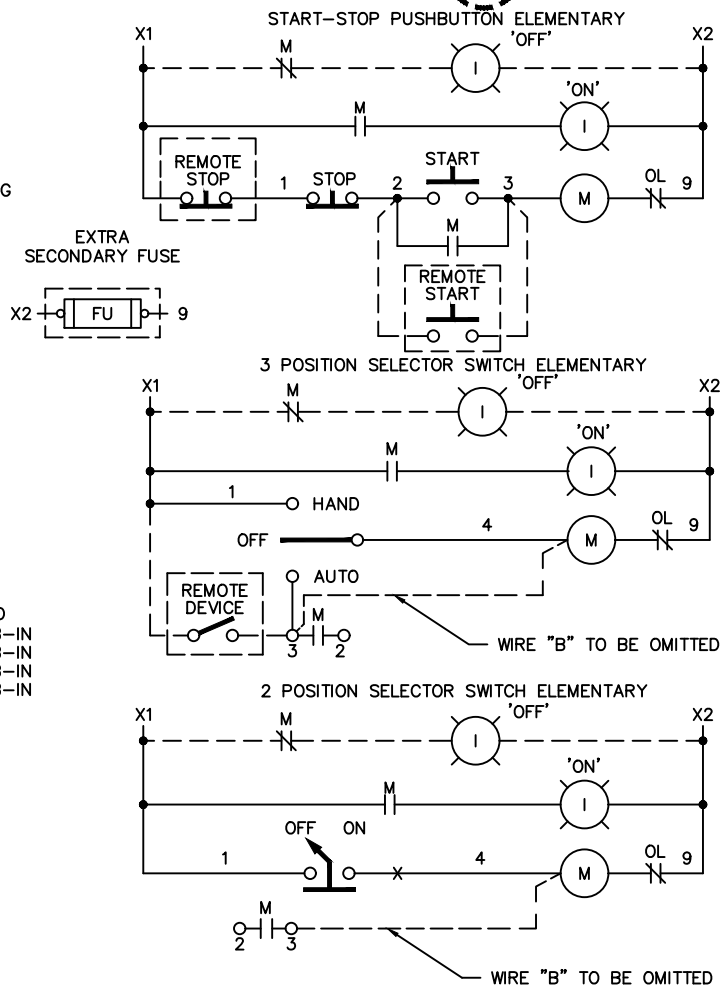
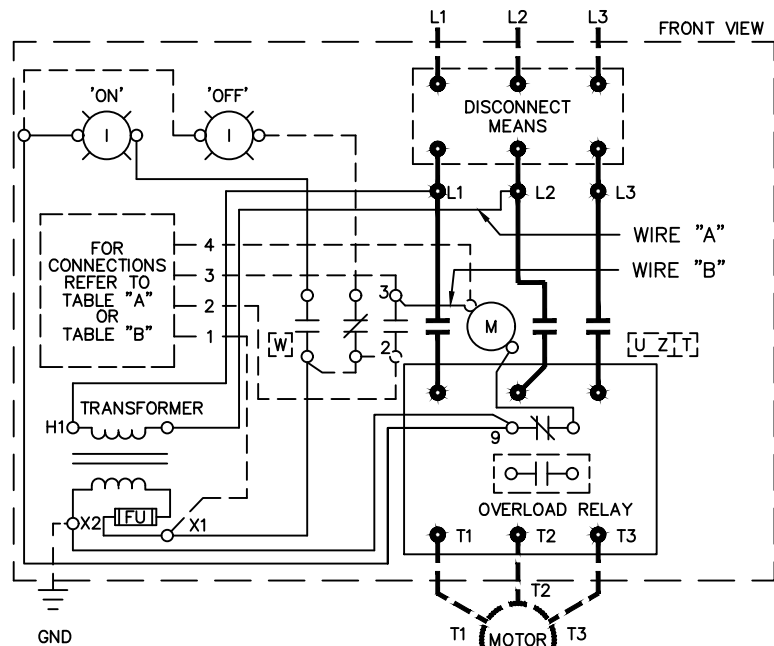
	LINE	LOAD
USE 75°C COPPER CONDUCTORS ONLY, FOR FIELD WIRING, TORQUE	CR307 AS MARKED	20 LB-IN
LINE AND LOAD TERMINALS AS MARKED OR AS SHOWN	CR308 AS MARKED	20 LB-IN
AT RIGHT:	CR387 AS MARKED	20 LB-IN

**FOR 1-PHASE OPERATION USING**

- SOLID STATE OVERLOAD RELAY  
SEE GEH-6430 (sz 1,2) OR GEH-6431 (sz 3,4)
- THERMAL OVERLOAD RELAY  
CHANGE CONNECTION WIRE "A" FROM L2 TO L3.  
CONNECT LINE TO L1 AND L3 AND LOAD TO T1 AND T3.

**FOR STARTER WITHOUT DISCONNECT MEANS - WIRE  
LINE DIRECT TO L1, L2 AND L3 ON STARTER.**

**FOR EXTRA AUXILIARY CONTACTS - A MAXIMUM OF 2  
CONTACTS MAY BE ADDED AT POSITIONS  
T,U,W,& Z FOR SIZE 0 & 1 ONLY.**



**ABB**

**WIRING DIAGRAM  
FVNR SIZE 00, 0 & 1**

THIRD ANGLE	SHEET#	DWG NO.	DATE	REV
	1 of 1	55-196448	02/21	11