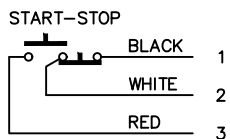
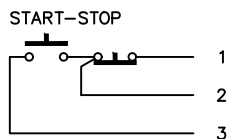
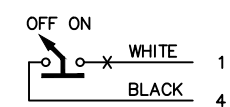
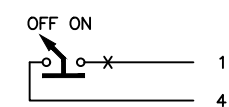
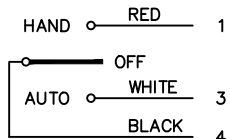
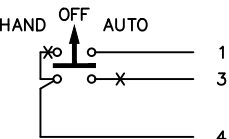
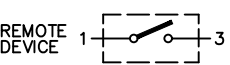
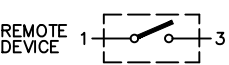


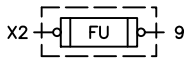
TABLE A	TABLE B
STANDARD PILOT DEVICES	OIL-TIGHT PILOT DEVICES
START-STOP 	START-STOP 
PUSHBUTTONS OFF ON  (OMIT WIRE "B")	PUSHBUTTONS OFF ON  (OMIT WIRE "B")
2 POSITION SELECTOR SWITCH HAND OFF  (OMIT WIRE "B")	2 POSITION SELECTOR SWITCH HAND OFF  (OMIT WIRE "B")
REMOTE DEVICE  3 POSITION SELECTOR SWITCH	REMOTE DEVICE  3 POSITION SELECTOR SWITCH

USE 75°C COPPER CONDUCTORS ONLY, FOR FIELD WIRING.

-NOMENCLATURE-
 M-LINE CONTACTOR
 I-INDICATING LIGHT
 FU-FUSE
 X-INDICATES CONTACT CLOSED

TORQUE LINE AND LOAD TERMINALS AS SHOWN AT RIGHT	LINE	LOAD
CR305	20 LB-IN	20 LB-IN
CR307	AS MARKED	20 LB-IN
CR308	35 LB-IN	20 LB-IN
CR387	AS MARKED	20 LB-IN

EXTRA SECONDARY FUSE



FOR CSA - GND KIT

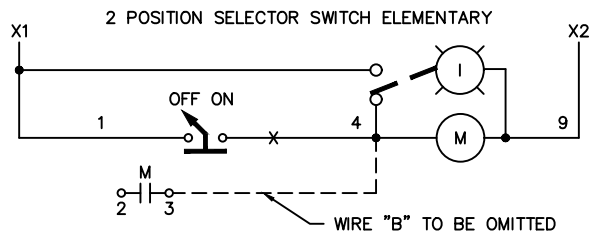
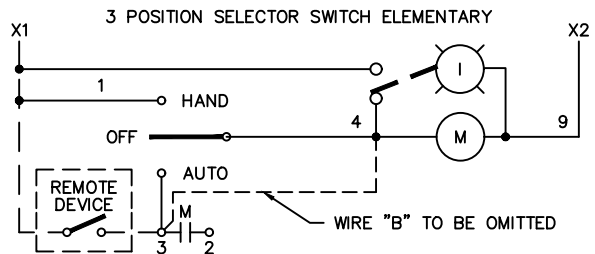
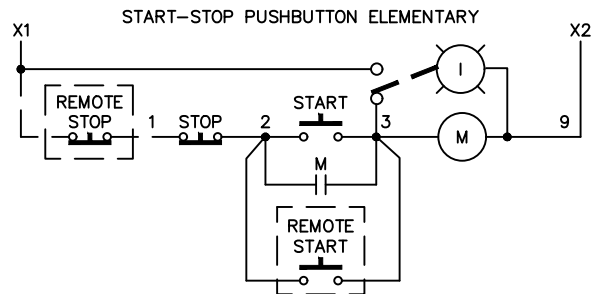
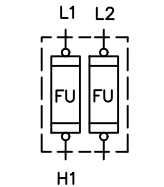
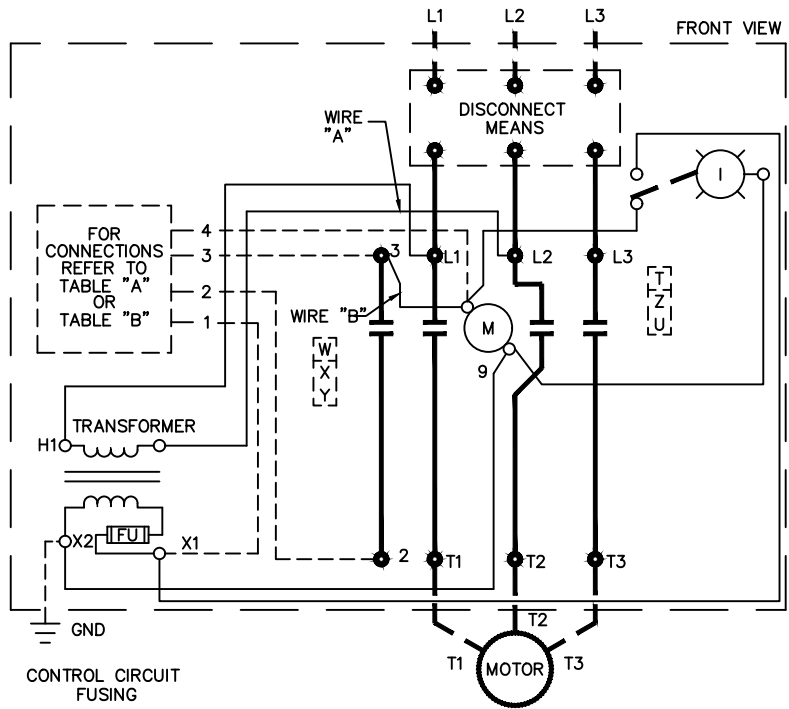
1/2-IN CONDUIT	55-213403G001
3/4-IN CONDUIT	55-213403G002

NOTE: REFER TO THE NATIONAL ELECTRICAL CODE. ADDITIONAL CONTROL CIRCUIT OVER-CURRENT PROTECTION MAY BE REQUIRED.

FOR 1-PHASE OPERATION - CHANGE CONNECTION OF WIRE "A" FROM L2 TO L3. CONNECT LINE TO L1 AND L3 AND LOAD TO T1 AND T3.

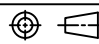
FOR CONTACTOR WITHOUT DISCONNECT MEANS - WIRE LINE DIRECT TO L1, L2 AND L3 ON CONTACTOR.

FOR EXTRA AUXILIARY CONTACTS- A MAXIMUM OF 4 CONTACTS MAY BE ADDED AT POSITIONS T,U,W,X,Y & Z FOR SIZE 0 & 1 ONLY.



ABB

WIRING DIAGRAM
 FVNR SIZE 00, 0 & 1

THIRD ANGLE	SHEET#	DWG NO.	DATE	REV
	1 of 1	55-200273	02/21	05