

TABLE A	TABLE B
STANDARD PILOT DEVICES	OIL-TIGHT PILOT DEVICES
START-STOP 	START-STOP
PUSHBUTTONS OFF ON (OMIT WIRE "B")	PUSHBUTTONS OFF ON (OMIT WIRE "B")
2 POSITION SELECTOR SWITCH HAND — RED — 1 OFF — WHITE — 3 AUTO — BLACK — 4 (OMIT WIRE "B")	2 POSITION SELECTOR SWITCH HAND — 1 OFF — 3 AUTO — 4 (OMIT WIRE "B")
3 POSITION SELECTOR SWITCH REMOTE DEVICE 1 — 3	3 POSITION SELECTOR SWITCH REMOTE DEVICE 1 — 3

USE 75°C COPPER CONDUCTORS ONLY, FOR FIELD WIRING.

—NOMENCLATURE—
 M—LINE CONTACTOR
 I—INDICATING LIGHTS
 FU—FUSE
 X—INDICATES CONTACT CLOSED

	LINE	LOAD
TORQUE LINE AND TORQUE TERMINALS AS SHOWN AT RIGHT	CR305 20 LB-IN CR308 35 LB-IN CR387 AS MARKED	20 LB-IN 20 LB-IN 20 LB-IN

NOTE: REFER TO THE NATIONAL ELECTRICAL CODE. ADDITIONAL CONTROL CIRCUIT OVER-CURRENT PROTECTION MAY BE REQUIRED.

FOR 1-PHASE OPERATION — CHANGE CONNECTION OF WIRE "A" FROM L2 TO L3. CONNECT LINE TO L1 AND L3 AND LOAD TO T1 AND T3.

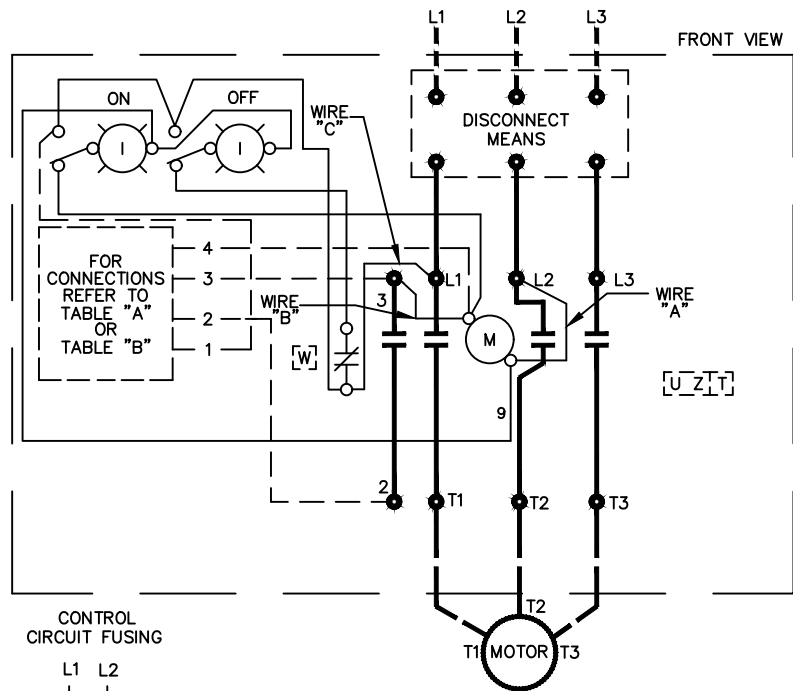
FOR CONTACTOR WITHOUT DISCONNECT MEANS — WIRE LINE DIRECT TO L1, L2 AND L3 ON CONTACTOR.

FOR CSA — GND KIT

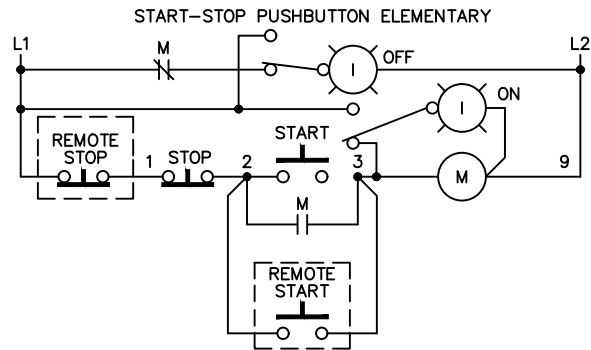
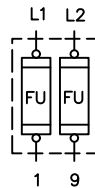
1/2-IN CONDUIT	55-213403G001
3/4-IN CONDUIT	55-213403G002

FOR EXTRA AUXILIARY CONTACTS— A MAXIMUM OF 2 CONTACTS MAY BE ADDED AT POSITIONS T,U,W & Z FOR SIZE 0 & 1 ONLY.

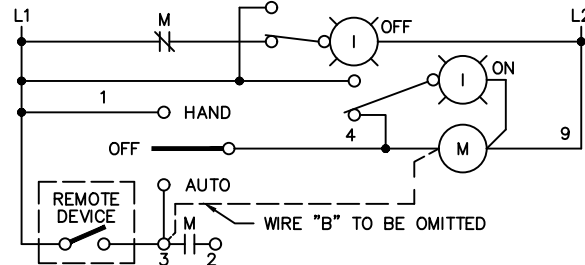
FOR SEPARATE CONTROL SOURCE — OMIT WIRE "A" AND WIRE "C". CONNECT SEPARATE CONTROL SOURCE TO 9 ON COIL AND TO 1 ON PILOT DEVICE. WIRES "A" AND "C" ARE OMITTED AT FACTORY ON ALL CONTACTORS WITH A COIL VOLTAGE OF 120V OR LESS.



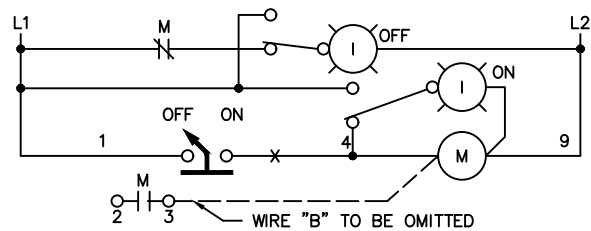
CONTROL CIRCUIT FUSING



3 POSITION SELECTOR SWITCH ELEMENTARY



2 POSITION SELECTOR SWITCH ELEMENTARY



ABB

**WIRING DIAGRAM
 FVNR SIZE 00, 0 & 1**

THIRD ANGLE	SHEET#	DWG NO.	DATE	REV
	1 of 1	55-205665	02/21	05