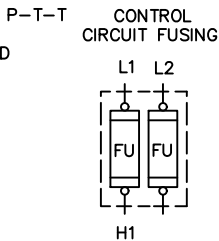
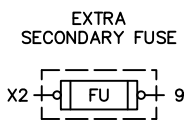


TABLE A STANDARD PILOT DEVICES	TABLE B OIL-TIGHT PILOT DEVICES
START-STOP 	START-STOP
PUSHBUTTONS <p>(OMIT WIRE "B")</p>	PUSHBUTTONS <p>(OMIT WIRE "B")</p>
2 POSITION SELECTOR SWITCH <p>(OMIT WIRE "B")</p>	2 POSITION SELECTOR SWITCH <p>(OMIT WIRE "B")</p>
3 POSITION SELECTOR SWITCH 	3 POSITION SELECTOR SWITCH

TORQUE LINE AND LOAD TERMINALS AS SHOWN AT RIGHT	CR305	CR307	CR308	CR387	LINE	LOAD
	20 LB-IN	AS MARKED	35 LB-IN	AS MARKED	20 LB-IN	20 LB-IN

-NOMENCLATURE-
M-LINE CONTACTOR
I-INDICATING LIGHTS
FU-FUSE
X-INDICATES CONTACTS CLOSED



FOR CSA - GND KIT
1/2-IN CONDUIT
3/4-IN CONDUIT

55-213403G001
55-213403G002

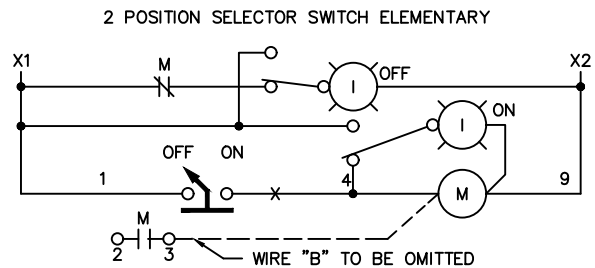
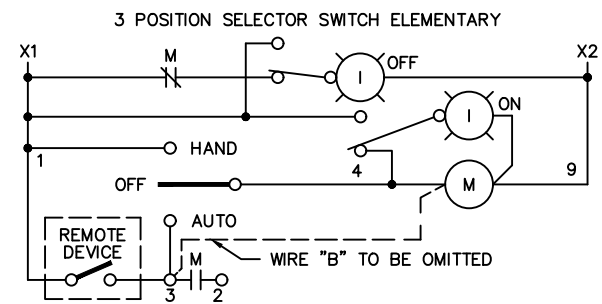
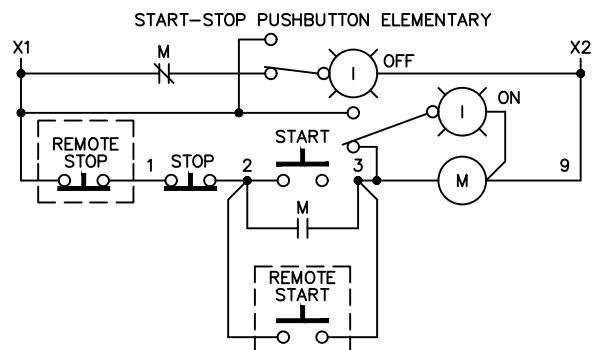
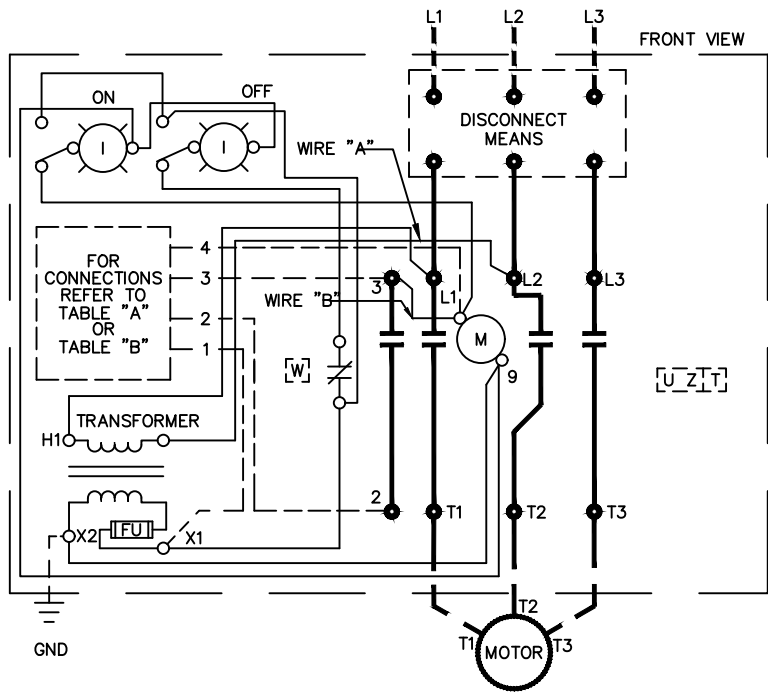
NOTE: REFER TO THE NATIONAL ELECTRICAL CODE. ADDITIONAL CONTROL CIRCUIT OVER-CURRENT PROTECTION MAY BE REQUIRED.

FOR 1-PHASE OPERATION - CHANGE CONNECTION OF WIRE "A" FROM L2 TO L3. CONNECT LINE TO L1 AND L3 AND LOAD TO T1 AND T3.

FOR CONTACTOR WITHOUT DISCONNECT MEANS - WIRE LINE DIRECT TO L1, L2 AND L3 ON CONTACTOR.

USE 75°C COPPER CONDUCTORS ONLY, FOR FIELD WIRING.

FOR EXTRA AUXILIARY CONTACTS- A MAXIMUM OF 3 CONTACTS MAY BE ADDED AT POSITIONS T,U,W & Z FOR SIZE 0 & 1 ONLY.



ABB

WIRING DIAGRAM
FVNR SIZE 00, 0 & 1

THIRD ANGLE	SHEET#	DWG NO.	DATE	REV
	1 of 1	55-205668	02/21	04