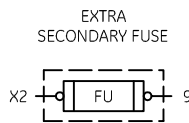


TABLE A STANDARD PILOT DEVICES	TABLE B OIL-TIGHT PILOT DEVICES
<b>START-STOP</b> 	<b>START-STOP</b> 
<b>PUSHBUTTONS</b> <b>OFF ON</b>  (OMIT WIRE "B")	<b>PUSHBUTTONS</b> <b>OFF ON</b>  (OMIT WIRE "B")
<b>2 POSITION SELECTOR SWITCH</b> <b>HAND</b> — RED — 1  (OMIT WIRE "B")	<b>2 POSITION SELECTOR SWITCH</b> <b>HAND</b> — OFF — 1  (OMIT WIRE "B")
<b>REMOTE DEVICE</b> 	<b>REMOTE DEVICE</b> 
<b>3 POSITION SELECTOR SWITCH</b> 	<b>3 POSITION SELECTOR SWITCH</b> 

TORQUE LINE AND  
LOAD TERMINALS  
AS SHOWN AT  
RIGHT

	LINE	LOAD
CR305	20 LB-IN	20 LB-IN
CR307	AS MARKED	20 LB-IN
CR308	35 LB-IN	20 LB-IN
CR387	AS MARKED	20 LB-IN

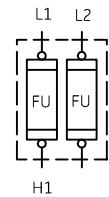
-NOMENCLATURE-  
M-LINE CONTACTOR  
I-INDICATING LIGHTS P-T-T  
FU-FUSE  
X-INDICATES CONTACTS CLOSED



FOR CSA - GND KIT  
1/2-IN CONDUIT  
3/4-IN CONDUIT

55-213403G001  
55-213403G002

CONTROL  
CIRCUIT FUSING



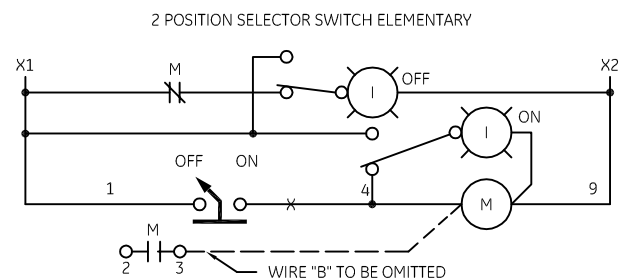
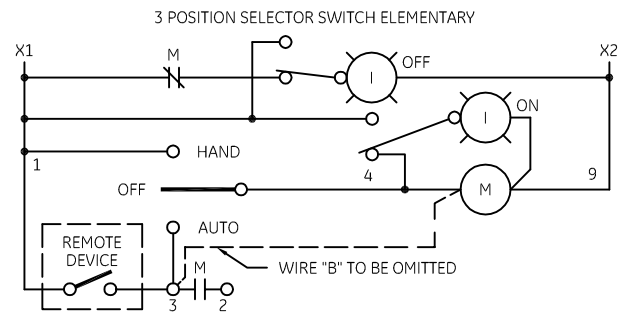
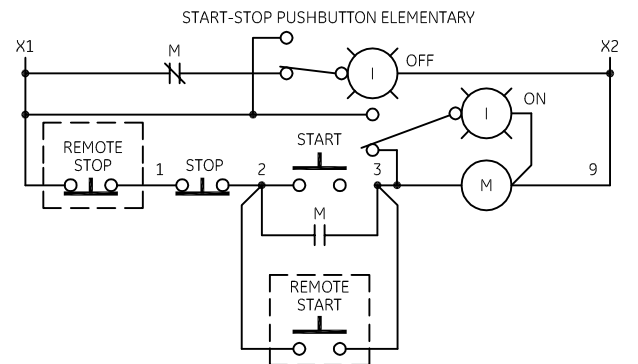
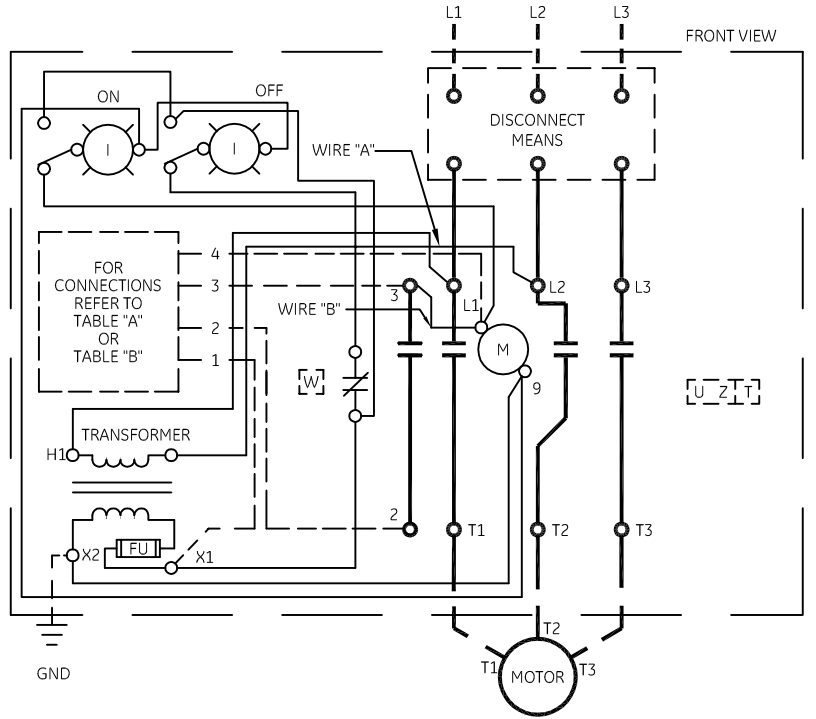
NOTE: REFER TO THE NATIONAL ELECTRICAL CODE.  
ADDITIONAL CONTROL CIRCUIT OVER-  
CURRENT PROTECTION MAY BE REQUIRED.

FOR 1-PHASE OPERATION - CHANGE CONNECTION  
OF WIRE "A" FROM L2 TO L3. CONNECT  
LINE TO L1 AND L3 AND LOAD TO T1  
AND T3.

FOR CONTACTOR WITHOUT DISCONNECT MEANS - WIRE  
LINE DIRECT TO L1, L2 AND L3 ON CONTACTOR.

USE 75°C COPPER CONDUCTORS ONLY,  
FOR FIELD WIRING.

FOR EXTRA AUXILIARY CONTACTS- A MAXIMUM OF 3  
CONTACTS MAY BE ADDED AT POSITIONS  
T,U,W & Z FOR SIZE 0 & 1 ONLY.



imagination at work

WIRING DIAGRAM  
FVNR SIZE 00, 0 & 1

AN #	THIRD ANGLE PROJECTION	SHEET #
09-9111		1 OF 1

DWG NO.	DATE	REV
55-205668	08/13/2009	2