

TABLE A STANDARD PILOT DEVICES	TABLE B OIL-TIGHT PILOT DEVICES
<b>START-STOP</b> 	<b>START-STOP</b> 
<b>PUSHBUTTONS</b> <b>OFF ON</b>  ( OMIT WIRE "B" )	<b>PUSHBUTTONS</b> <b>OFF ON</b>  ( OMIT WIRE "B" )
<b>2 POSITION SELECTOR SWITCH</b> <b>HAND</b> ○ RED 1  <b>AUTO</b> ○ WHITE 3  ( OMIT WIRE "B" )	<b>2 POSITION SELECTOR SWITCH</b> <b>HAND</b> OFF AUTO  ( OMIT WIRE "B" )
<b>REMOTE DEVICE</b> 1 ○ 3 	<b>REMOTE DEVICE</b> 1 ○ 3 
<b>3 POSITION SELECTOR SWITCH</b> 	<b>3 POSITION SELECTOR SWITCH</b> 

USE 75°C COPPER CONDUCTORS ONLY.  
FOR FIELD WIRING.

-NOMENCLATURE-  
M-LINE CONTACTOR  
I-INDICATING LIGHT  
FU-FUSE  
X-INDICATES CONTACT CLOSED

TORQUE LINE AND LOAD TERMINALS AS SHOWN AT RIGHT:	LINE	LOAD
CR305	20 LB-IN	20 LB-IN
CR307	AS MARKED	20 LB-IN
CR308	35 LB-IN	20 LB-IN
CR387	AS MARKED	20 LB-IN

NOTE: REFER TO THE NATIONAL ELECTRICAL CODE.  
ADDITIONAL CONTROL CIRCUIT OVER CURRENT PROTECTION MAY BE REQUIRED.

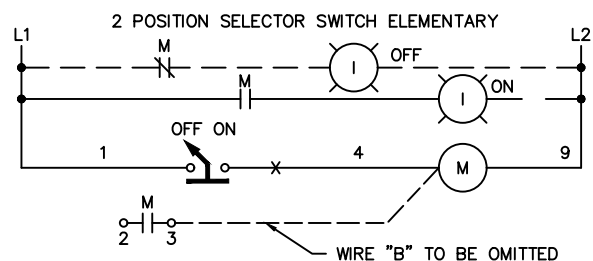
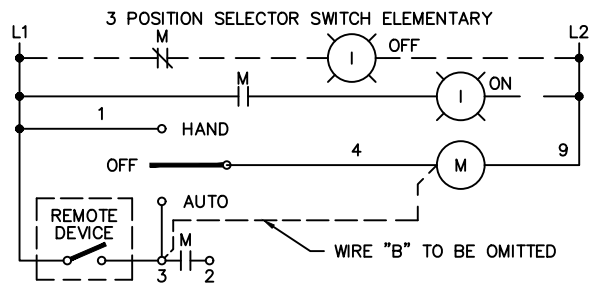
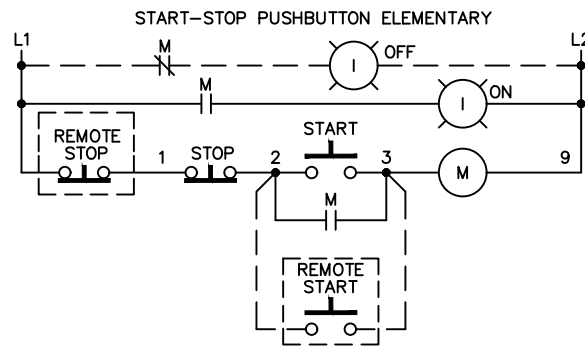
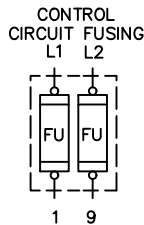
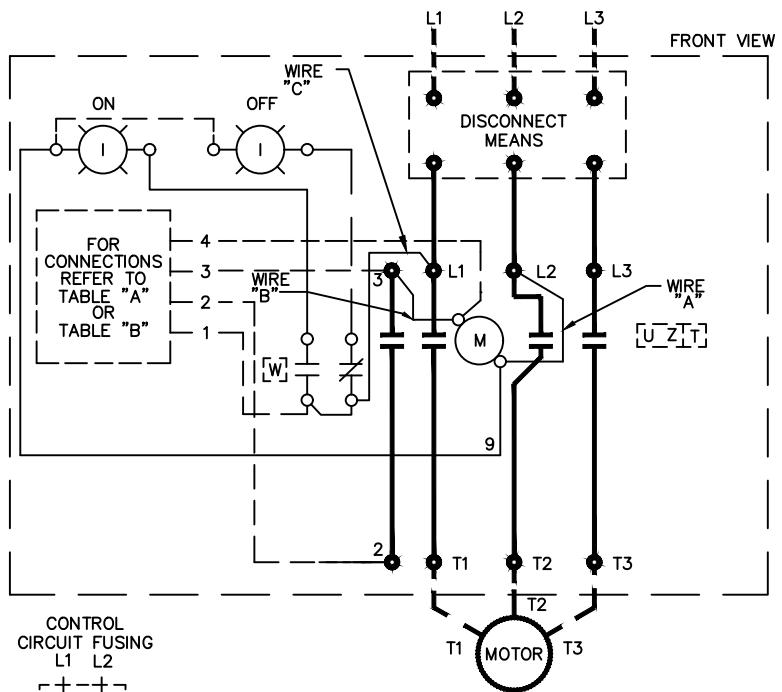
FOR 1-PHASE OPERATION-CHANGE CONNECTION OF WIRE "A" FROM L2 TO L3. CONNECT LINE TO L1 AND L3 AND LOAD TO T1 AND T3.

FOR CONTACTOR WITHOUT DISCONNECT MEANS - WIRE LINE DIRECT TO L1, L2 AND L3 ON CONTACTOR.

FOR CSA-GND KIT  
1/2-IN CONDUIT 55-213403G001  
3/4-IN CONDUIT 55-213403G002

FOR EXTRA AUXILIARY CONTACTS - A MAXIMUM OF 2 CONTACTS MAY BE ADDED AT POSITIONS T,U,W & Z FOR SIZE 0 & 1 ONLY.

FOR SEPARATE CONTROL SOURCE- OMIT WIRE "A" AND WIRE "C". CONNECT SEPARATE CONTROL SOURCE TO 9 ON COIL AND TO 1 ON PILOT DEVICE. WIRES "A" AND "C" ARE OMITTED AT FACTORY ON ALL CONTACTORS WITH A COIL VOLTAGE OF 120V OR LESS.



**ABB**

WIRING DIAGRAM  
FVNR SIZE 00, 0 & 1

THIRD ANGLE	SHEET#	DWG NO.	DATE	REV
	1 of 1	55-212322	02/21	04