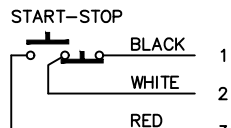
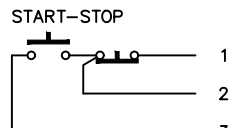
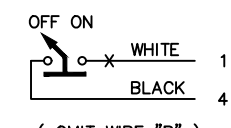
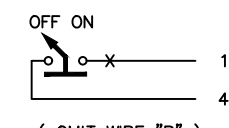
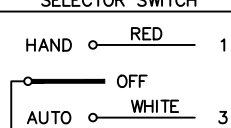
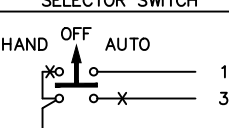
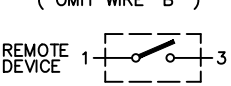
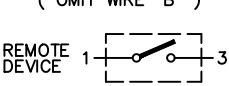




TABLE A STANDARD PILOT DEVICES	TABLE B OIL-TIGHT PILOT DEVICES
START-STOP 	START-STOP 
PUSHBUTTONS OFF ON  (OMIT WIRE "B")	PUSHBUTTONS OFF ON  (OMIT WIRE "B")
2 POSITION SELECTOR SWITCH HAND ○ RED 1  (OMIT WIRE "B")	2 POSITION SELECTOR SWITCH HAND ○ OFF AUTO 1  (OMIT WIRE "B")
REMOTE DEVICE 1 ○ 3 	REMOTE DEVICE 1 ○ 3 
3 POSITION SELECTOR SWITCH 	3 POSITION SELECTOR SWITCH 

FOR CSA-GND KIT
 1/2-IN CONDUIT
 3/4-IN CONDUIT

55-213403G001
 55-213403G002

—NOMENCLATURE—
 M—LINE CONTACTOR
 I—INDICATING LIGHT
 FU—FUSE
 X—INDICATES CONTACT CLOSED

TORQUE LINE AND LOAD TERMINALS AS SHOWN AT RIGHT:	<table border="0"> <tr> <td>CR305</td> <td>LINE</td> <td>20 LB-IN</td> <td>LOAD</td> <td>20 LB-IN</td> </tr> <tr> <td>CR307</td> <td>AS MARKED</td> <td>20 LB-IN</td> <td>20 LB-IN</td> <td>20 LB-IN</td> </tr> <tr> <td>CR308</td> <td>35 LB-IN</td> <td>20 LB-IN</td> <td>20 LB-IN</td> <td>20 LB-IN</td> </tr> <tr> <td>CR387</td> <td>AS MARKED</td> <td>20 LB-IN</td> <td>20 LB-IN</td> <td>20 LB-IN</td> </tr> </table>	CR305	LINE	20 LB-IN	LOAD	20 LB-IN	CR307	AS MARKED	20 LB-IN	20 LB-IN	20 LB-IN	CR308	35 LB-IN	20 LB-IN	20 LB-IN	20 LB-IN	CR387	AS MARKED	20 LB-IN	20 LB-IN	20 LB-IN
CR305	LINE	20 LB-IN	LOAD	20 LB-IN																	
CR307	AS MARKED	20 LB-IN	20 LB-IN	20 LB-IN																	
CR308	35 LB-IN	20 LB-IN	20 LB-IN	20 LB-IN																	
CR387	AS MARKED	20 LB-IN	20 LB-IN	20 LB-IN																	

NOTE: REFER TO THE NATIONAL ELECTRICAL CODE.
 ADDITIONAL PROTECTION CIRCUIT OVER-CURRENT PROTECTION MAY BE REQUIRED.

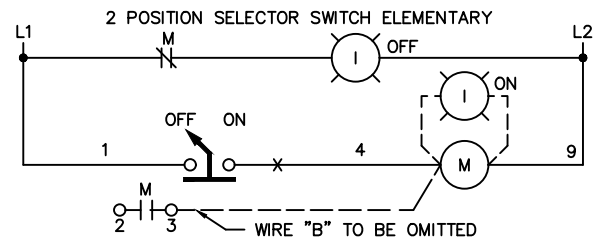
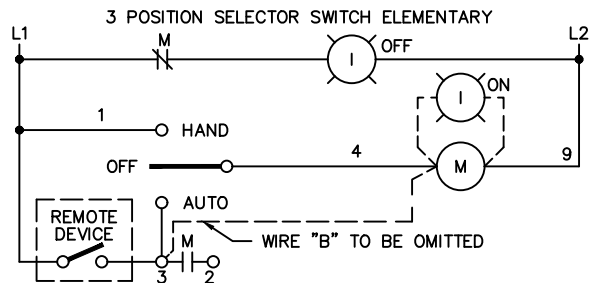
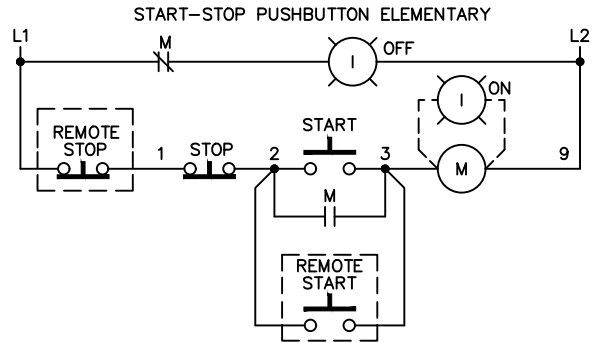
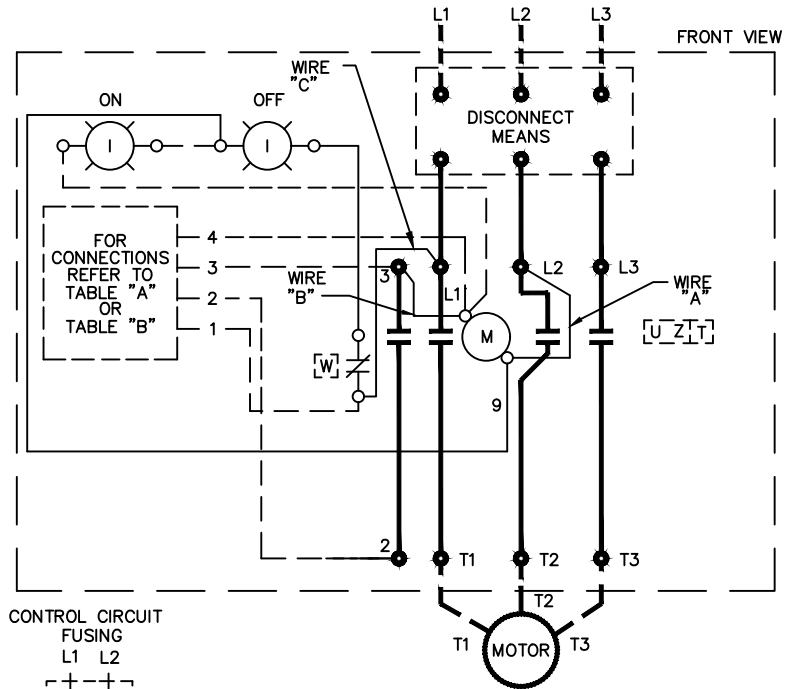
FOR 1-PHASE OPERATION—CHANGE CONNECTION OF WIRE "A" FROM L2 TO L3. CONNECT LINE TO L1 AND L3 AND LOAD TO T1 AND T3.

FOR CONTACTOR WITHOUT DISCONNECT MEANS — WIRE LINE DIRECT TO L1, L2 AND L3 ON CONTACTOR

USE 75°C COPPER CONDUCTORS ONLY.
 FOR FIELD WIRING.

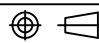
FOR EXTRA AUXILIARY CONTACTS — A MAXIMUM OF 2 CONTACTS MAY BE ADDED AT POSITIONS T, U, W & Z FOR SIZE 0 & 1 ONLY.

FOR SEPARATE CONTROL SOURCE— OMIT WIRE "A" AND WIRE "C". CONNECT SEPARATE CONTROL SOURCE TO 9 ON COIL AND TO 1 ON PILOT DEVICE. WIRES "A" AND "C" ARE OMITTED AT FACTORY ON ALL CONTACTORS WITH A COIL VOLTAGE OF 120V OR LESS.



ABB

WIRING DIAGRAM
 FVNR SIZE 00, 0 & 1

THIRD ANGLE	SHEET#	DWG NO.	DATE	REV
	1 of 1	55-212323	02/21	04