

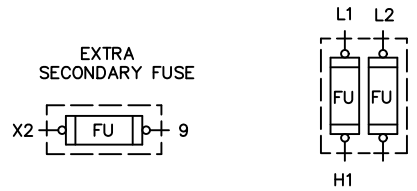
| TABLE A STANDARD PILOT DEVICES | TABLE B OIL-TIGHT PILOT DEVICES |
|--|--|
| START-STOP | START-STOP |
| PUSHBUTTONS OFF ON (OMIT WIRE "B") | PUSHBUTTONS OFF ON (OMIT WIRE "B") |
| 2 POSITION SELECTOR SWITCH HAND OFF AUTO (OMIT WIRE "B") | 2 POSITION SELECTOR SWITCH HAND OFF AUTO (OMIT WIRE "B") |
| REMOTE DEVICE | REMOTE DEVICE |
| 3 POSITION SELECTOR SWITCH | 3 POSITION SELECTOR SWITCH |

FOR CSA-GND KIT
1/2-IN CONDUIT
3/4-IN CONDUIT

55-213403G001
55-213403G002

-NOMENCLATURE-
M-LINE CONTACTOR
I-INDICATING LIGHT
FU-FUSE
X-INDICATES CONTACT CLOSED

CONTROL
CIRCUIT FUSING



| TORQUE LINE AND LOAD TERMINALS AS SHOWN AT RIGHT: | | LINE | LOAD |
|---|-------|-----------|----------|
| | CR306 | 20 LB-IN | 20 LB-IN |
| | CR307 | AS MARKED | 20 LB-IN |
| | CR308 | 35 LB-IN | 20 LB-IN |
| | CR387 | AS MARKED | 20 LB-IN |

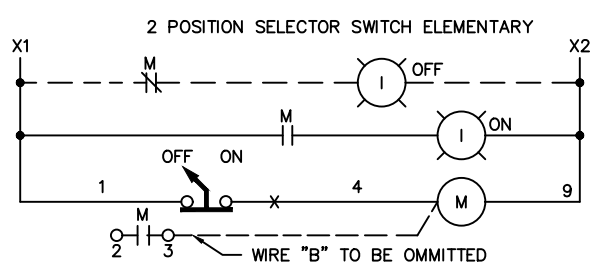
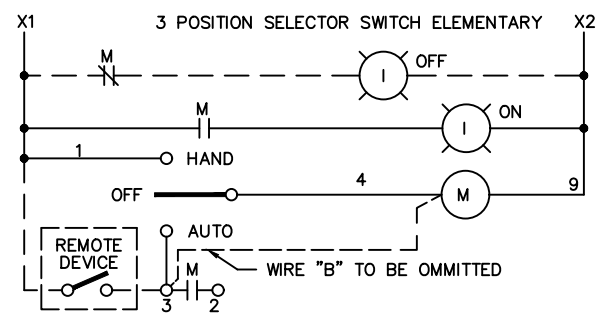
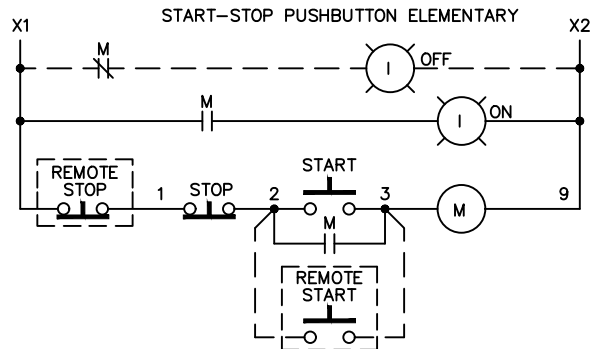
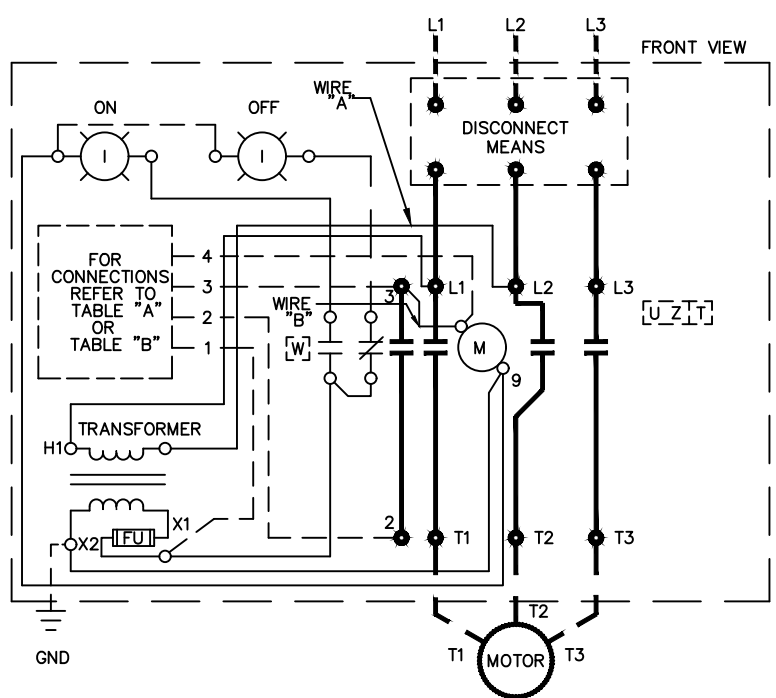
NOTE: REFER TO THE NATIONAL ELECTRICAL CODE. ADDITIONAL CONTROL CIRCUIT OVERCURRENT PROTECTION MAY BE REQUIRED.

FOR 1-PHASE OPERATION-CHANGE CONNECTION OF WIRE "A" FROM L2 TO L3. CONNECT LINE TO L1 AND L3 AND LOAD TO T1 AND T3.

FOR CONTACTOR WITHOUT DISCONNECT MEANS - WIRE LINE DIRECT TO L1, L2 AND L3 ON CONTACTOR .

USE 75°C COPPER CONDUCTORS ONLY, FOR FIELD WIRING.

FOR EXTRA AUXILIARY CONTACTS- A MAXIMUM OF 2 CONTACTS MAY BE ADDED AT POSITIONS T,U,W & Z FOR SIZE 0 & 1 ONLY.



ABB

WIRING DIAGRAM
FVNR SIZE 00, 0 & 1

| | | | |
|-------------|--------|-----------|-------|
| THIRD ANGLE | SHEET# | DWG NO. | DATE |
| | 1 of 1 | 55-212324 | 02/21 |
| | | | REV |
| | | | 04 |