

TABLE A STANDARD PILOT DEVICES	TABLE B OIL-TIGHT PILOT DEVICES
START-STOP 	START-STOP
PUSHBUTTONS OFF ON (OMIT WIRE "B")	PUSHBUTTONS OFF ON (OMIT WIRE "B")
2 POSITION SELECTOR SWITCH HAND OFF (OMIT WIRE "B")	2 POSITION SELECTOR SWITCH HAND OFF AUTO (OMIT WIRE "B")
REMOTE DEVICE 3 POSITION SELECTOR SWITCH	REMOTE DEVICE 3 POSITION SELECTOR SWITCH

—NOMENCLATURE—
M—LINE CONTACTOR
I—INDICATING LIGHT
FU—FUSE
X—INDICATES CONTACT CLOSED

USE 75°C, COPPER CONDUCTORS ONLY, FOR FIELD WIRING. TORQUE LINE AND LOAD TERMINALS AS SHOWN AT RIGHT:

TERMINAL TIGHTENING TORQUE (LB-IN)

SIZE	LOAD SIDE		LINE SIDE	
	THERMAL OL	ELECTRONIC OL	CR306	CR307,387 CR308
2	50	20	50	AS MARKED 50
3	150	200	150	AS MARKED 50
4	200	200	200	AS MARKED 275

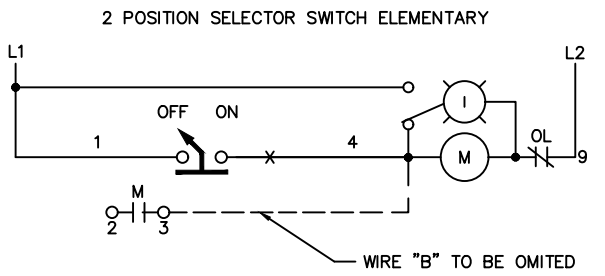
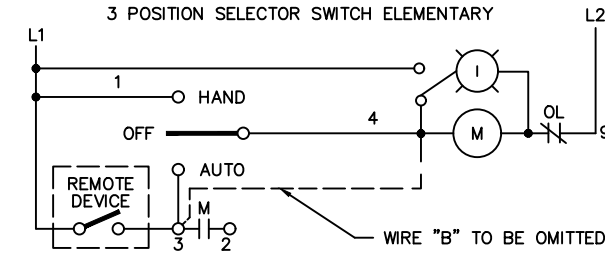
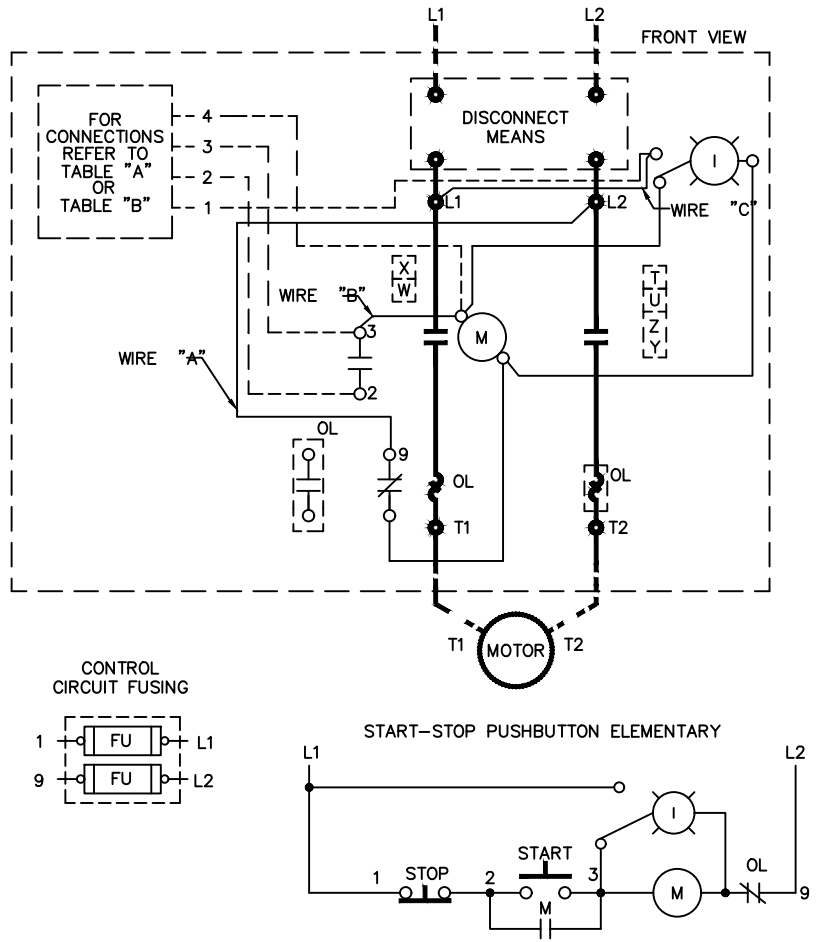
NOTE: REFER TO THE NATIONAL ELECTRICAL CODE. ADDITIONAL CONTROL CIRCUIT OVERCURRENT PROTECTION MAY BE REQUIRED.

FOR STARTER WITHOUT DISCONNECT MEANS — WIRE LINE DIRECT TO L1 AND L2 ON STARTER.

FOR EXTRA AUXILIARY CONTACTS— A MAXIMUM OF 5 CONTACTS MAY BE ADDED AT POSITIONS T,U,W,X,Y, & Z

FOR SEPARATE CONTROL SOURCE — OMIT WIRE "A" AND WIRE "C" AND CONNECT SEPARATE CONTROL SOURCE TO 9 ON OL AND TO 1 ON PILOT DEVICE. WIRES "A" AND "C" ARE OMITTED AT FACTORY ON ALL STARTERS WITH A COIL VOLTAGE OF 120V OR LESS.

FOR CSA—GND KIT
1/2-IN CONDUIT 55-213403G001
3/4-IN CONDUIT 55-213403G002
1-IN CONDUIT 55-213403G003
1 1/4-IN CONDUIT 55-213403G004
1 1/2-IN CONDUIT 55-213403G005
2-IN CONDUIT 55-213403G006
2 1/2-IN CONDUIT 55-213403G007



ABB

**WIRING DIAGRAM
FVNR SIZE 2, 3 & 4**

THIRD ANGLE	SHEET#	DWG NO.	DATE	REV
	1 of 1	55-212356	02/21	07