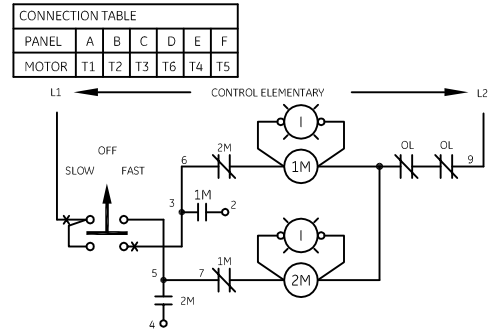


INSTALL OVERLOAD HEATERS

FOR	LOW SPEED	HIGH SPEED
IN	20L	10L



-NOMENCLATURE-

M-LINE CONTACTOR  
 OL-OVERLOAD RELAY  
 I-INDICATING LIGHT  
 FU-FUSE  
 X-INDICATES CONTACT CLOSED

1M&2M-SPEED CONTACTORS MECHANICALLY & ELECTRICALLY INTERLOCKED.

ALTERNATE LEGENDS FOR FAST AND SLOW ARE HIGH AND LOW

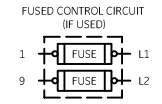
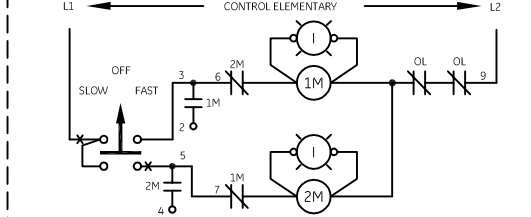
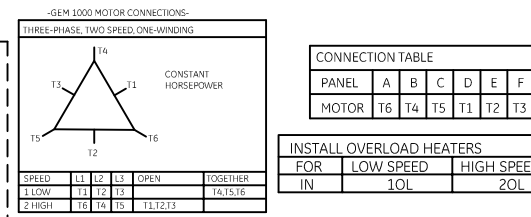
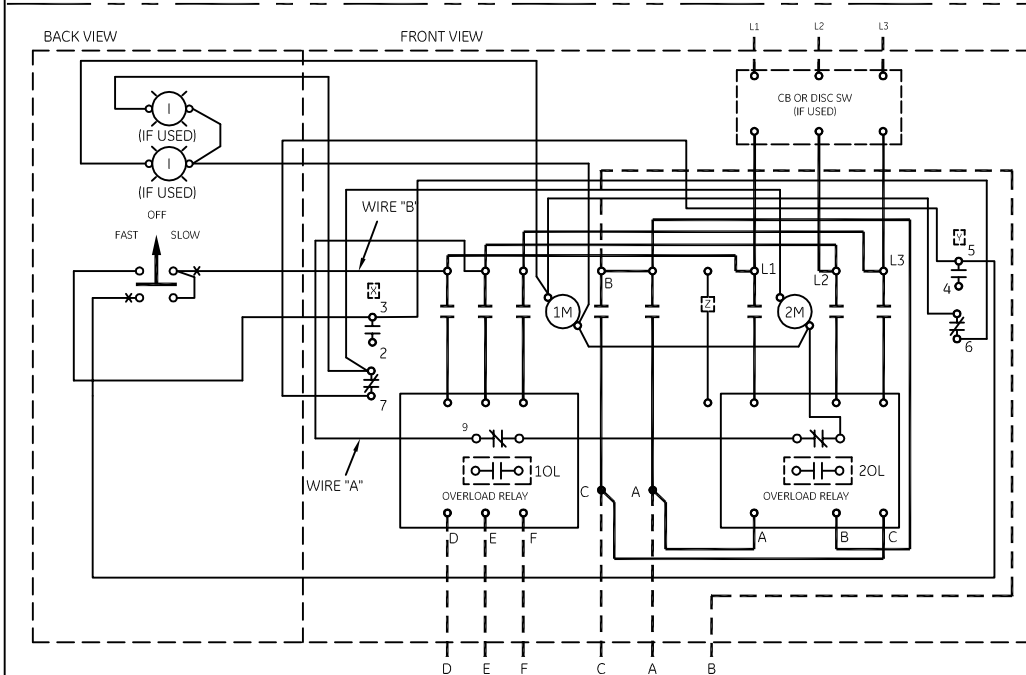
NOTE: ADDITIONAL OVER-CURRENT PROTECTION MAY BE REQUIRED. REFER TO THE NATIONAL ELECTRICAL CODE OR LOCAL ELECTRICAL CODE AS REQUIRED.

GROUND KIT

1/2-IN CONDUIT	55-213403G001
3/4-IN CONDUIT	55-213403G002
1-IN CONDUIT	55-213403G003
1 1/4-IN CONDUIT	55-213403G004
1 1/2-IN CONDUIT	55-213403G005
2-IN CONDUIT	55-213403G006
2 1/2-IN CONDUIT	55-213403G007
3-IN CONDUIT	55-213403G008

	LINE	LOAD
USE 75°C, COPPER CONDUCTORS ONLY, FOR FIELD WIRING. TORQUE LINE AND LOAD TERMINALS AS SHOWN AT RIGHT:	CR309 20 LB-IN	20 LB-IN
	CR310 AS MARKED	20 LB-IN
	CR311 35 LB-IN	20 LB-IN
	CR390 AS MARKED	20 LB-IN

FOR SEPARATE CONTROL SOURCE-REMOVE WIRES "A" & "B" AND CONNECT SEPARATE CONTROL SOURCE TO 9 ON OL AND TO 1 ON PILOT DEVICE. WIRES "A" & "B" ARE OMITTED AT FACTORY ON ALL CONTROLLERS WITH A COIL VOLTAGE OF 120V OR LESS.



imagination at work

AN #	THIRD ANGLE PROJECTION	SHEET #	WIRING DIAGRAM 2 SPEED - 1 WINDING SIZE 0 & 1		
09-9115		1 OF 1	DWG. NO. 55-516033	DATE 09/04/2009	REV 11