

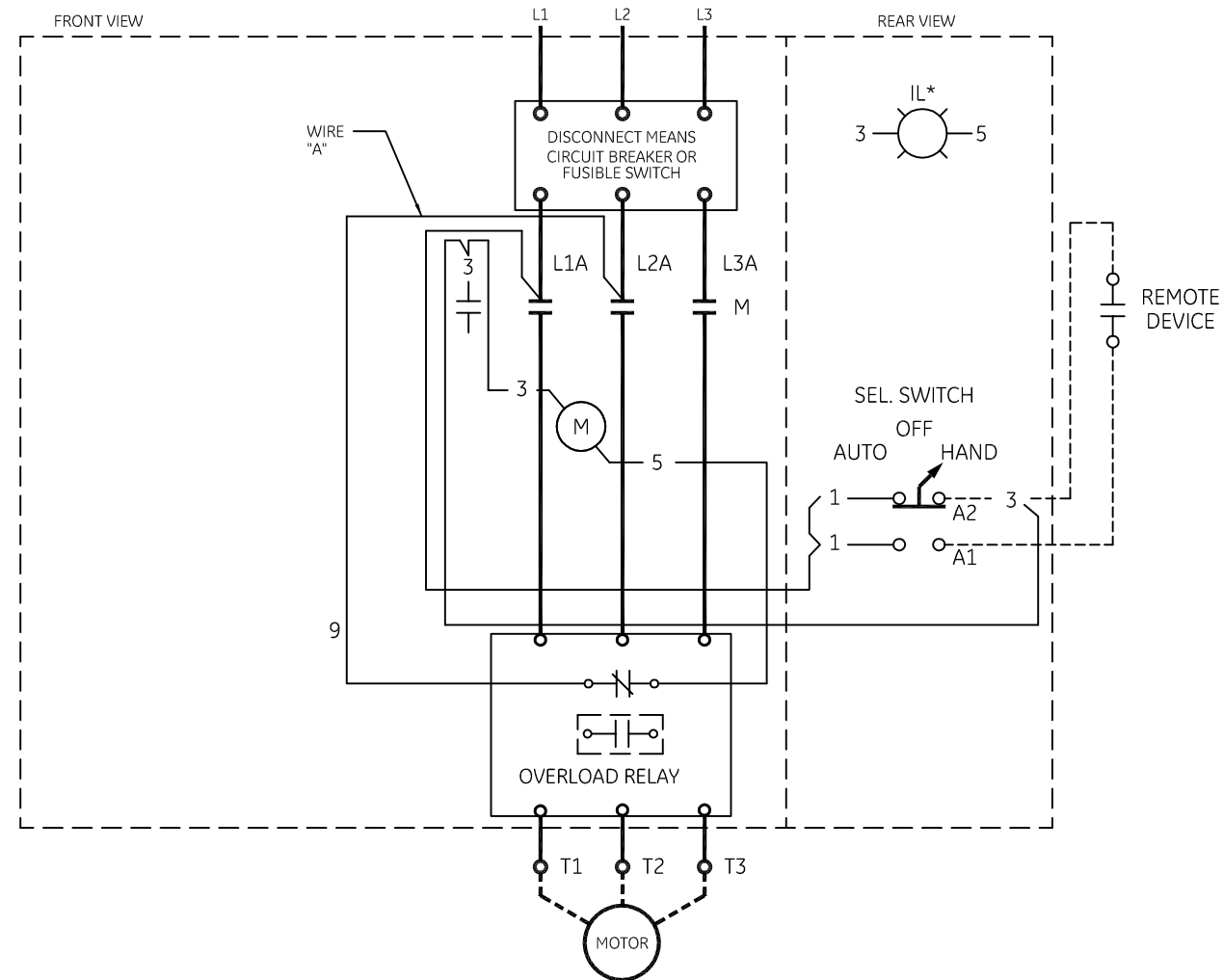
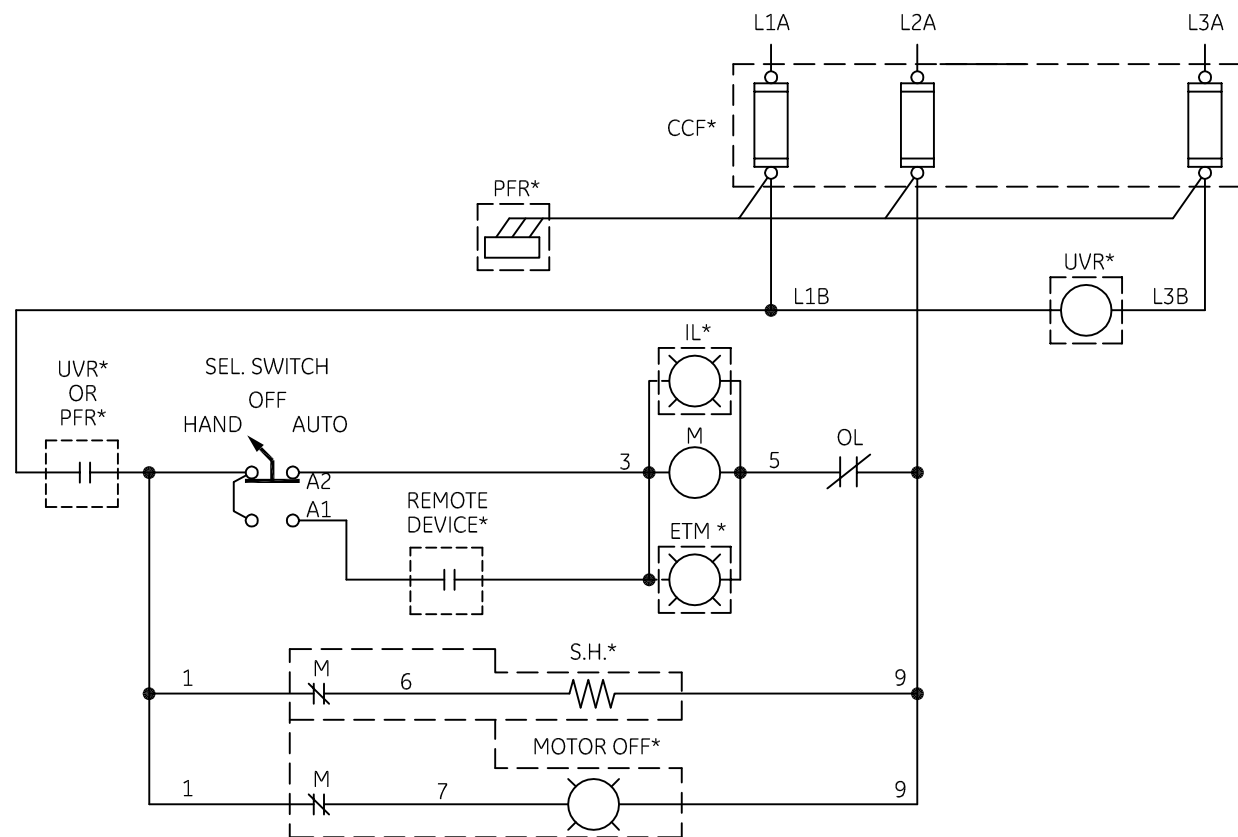
NOMENCLATURE

- CCF CONTROL CIRCUIT FUSING
- FU FUSE
- IL INDICATING LIGHT
- M MOTOR CONTACTOR
- PB PUSHBUTTON
- PFR PHASE FAILURE RELAY
- UVR UNDERVOLTAGE RELAY
- * IF USED
- ETM ELAPSED TIME METER
- S.H. SPACE HEATER
- G GREEN IND. LIGHT
- R RED IND. LIGHT

NOTE: ADDITIONAL OVER-CURRENT PROTECTION MAY BE REQUIRED. REFER TO THE NATIONAL ELECTRICAL CODE OR LOCAL ELECTRICAL CODE AS REQUIRED.

SELECTOR SWITCH MAY NOT BE INCLUDED ON SOME FORMS

**FOR THREE PHASE USE 3 HEATERS. FOR SINGLE PHASE USE 2 HEATERS AND CONNECT LINE TO L1 AND L3, LOAD TO T1 AND T3. MOVE WIRE "A" FROM L2A TO L3A.



CONTACT	POSITION		
	AUTO	OFF	HAND
A1	X		
A2			X

X-INDICATES CONTACT CLOSED

SIZE	CR340		CR341	
	LINE	LOAD	LINE	LOAD
1	AS MARKED	20 LB-IN	35 LB-IN	20 LB-IN
2	AS MARKED	50 LB-IN	50 LB-IN	50 LB-IN
3	AS MARKED	150 LB-IN	50 LB-IN	150 LB-IN
4	AS MARKED	200 LB-IN	275 LB-IN	200 LB-IN
5	AS MARKED	300 LB-IN	AS MARKED	300 LB-IN

USE 75°C COPPER CONDUCTORS ONLY, FOR FIELD WIRING. TORQUE LINE AND LOAD TERMINALS AS SHOWN AT RIGHT:

imagination at work
WIRING DIAGRAM
PUMP PANEL (CR340, 341)

AN #	THIRD ANGLE PROJECTION	SHEET #	DWG NO.
09-9121		1 OF 1	55-526901
DATE		REV	
10/05/2009		9	