

-NOMENCLATURE-
 1M,2M-CONTACTORS
 OL-OVERLOAD RELAY
 I-INDICATING LIGHT
 FU-FUSE
 X-INDICATES CONTACT CLOSED
 TR-TIMER
 T.C.-TIME CLOSING CONTACT
 PFR-PHASE FAILURE RELAY

ALTERNATIVE LEGENDS FOR FAST AND SLOW ARE HIGH AND LOW.

USE 75°C COPPER CONDUCTORS ONLY, FOR FIELD WIRING. TORQUE LINE AND LOAD TERMINALS AS MARKED OR AS SHOWN AT RIGHT:

| SIZE | LOAD SIDE | | LINE SIDE | | |
|------|------------|---------------|-----------|-----------|-------|
| | THERMAL OL | ELECTRONIC OL | CR309 | CR310,390 | CR311 |
| 2 | 50 | 20 | 50 | AS MARKED | 50 |
| 3 | 150 | 200 | 150 | AS MARKED | 50 |
| 4 | 200 | 200 | 200 | AS MARKED | 275 |

NOTE: ADDITIONAL OVER-CURRENT PROTECTION MAY BE REQUIRED. REFER TO THE NATIONAL ELECTRICAL CODE OR LOCAL ELECTRICAL CODE AS REQUIRED.

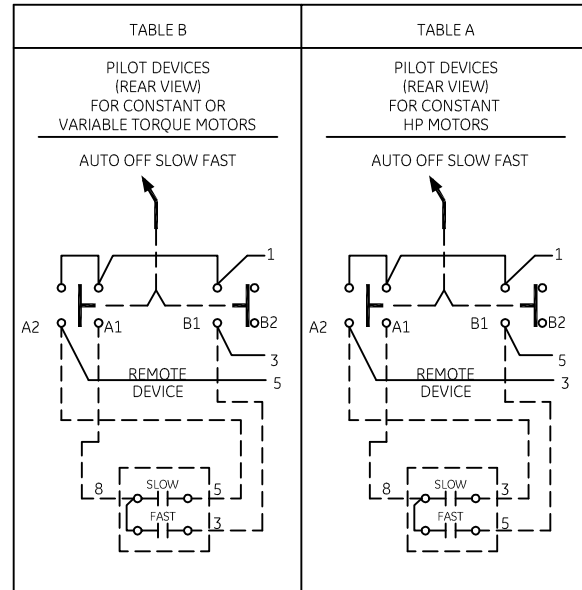
FOR EXTRA AUXILIARY CONTACTS- A MAXIMUM OF 4 CONTACTS MAY BE ADDED AT POSITIONS W,X,Y & Z.

FOR CONTROLLER WITHOUT DISCONNECT MEANS-WIRE LINE DIRECT TO L1, L2 AND L3 ON CONTROLLER.

THIS CONTROLLER IS FACTORY WIRED PER TABLE "B" IF CONSTANT HP MOTOR IS USED, REWIRE TIMER PER CONSTANT HP ELEMENTARY AND WIRE PER TABLE A.

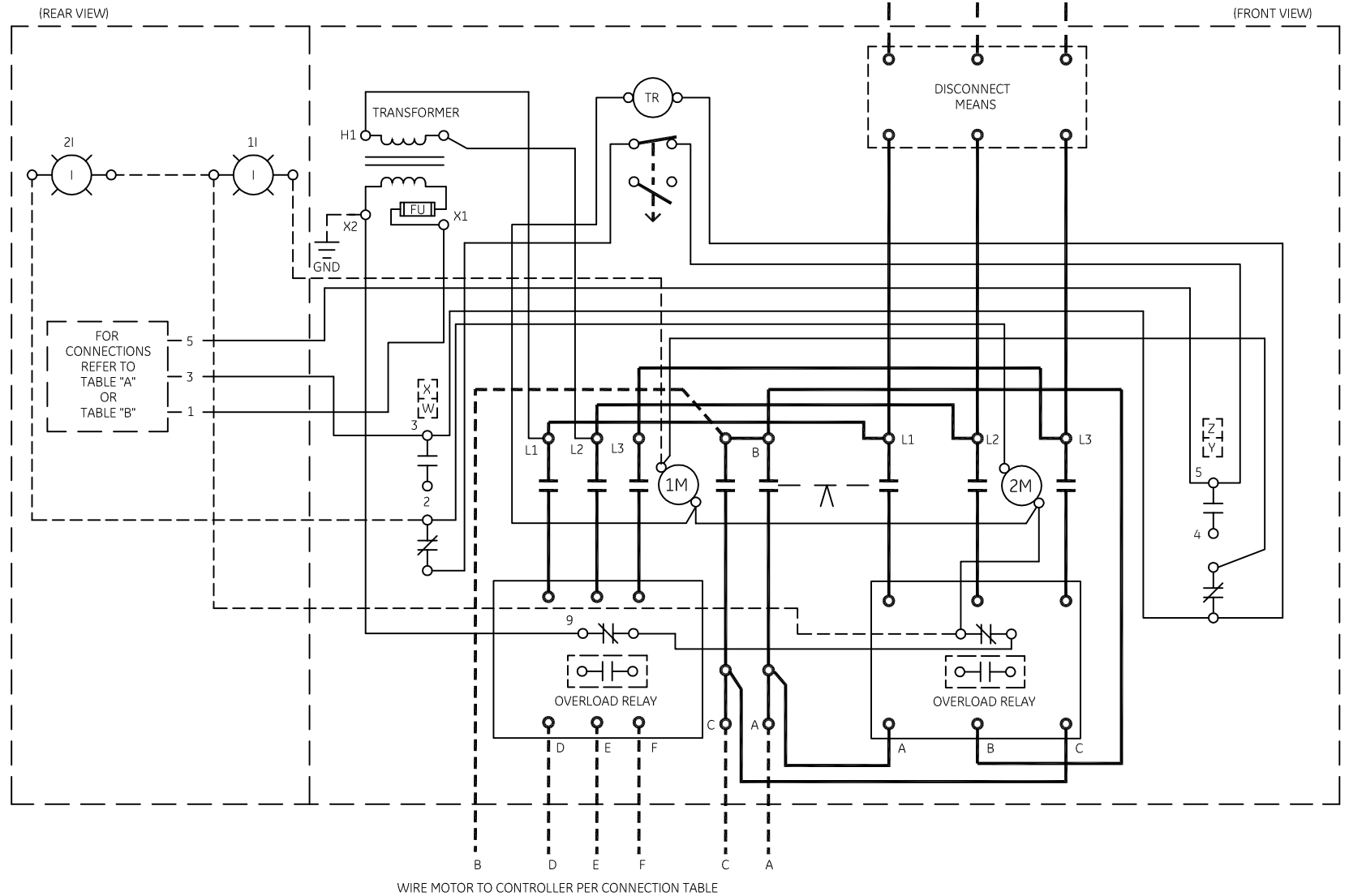
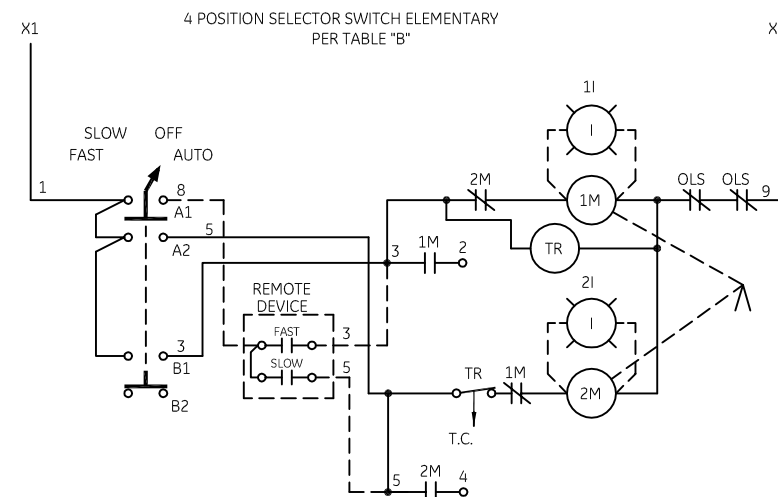
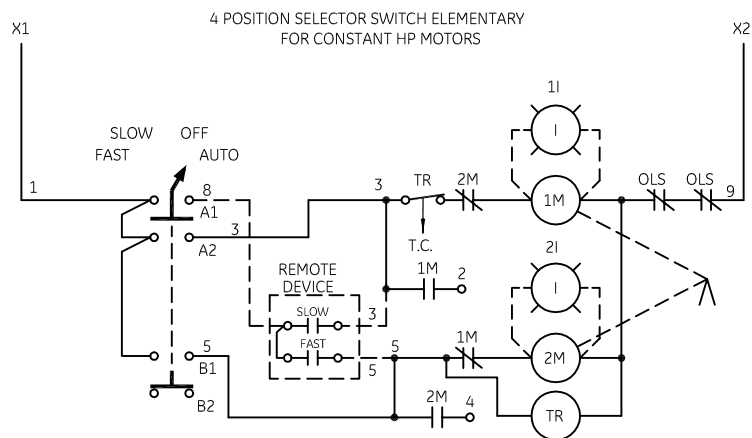
GROUND KIT

| | |
|------------------|---------------|
| 1/2-IN CONDUIT | 55-213403G001 |
| 3/4-IN CONDUIT | 55-213403G002 |
| 1-IN CONDUIT | 55-213403G003 |
| 1 1/4-IN CONDUIT | 55-213403G004 |
| 1 1/2-IN CONDUIT | 55-213403G005 |
| 2-IN CONDUIT | 55-213403G006 |
| 2 1/2-IN CONDUIT | 55-213403G007 |
| 3-IN CONDUIT | 55-213403G008 |

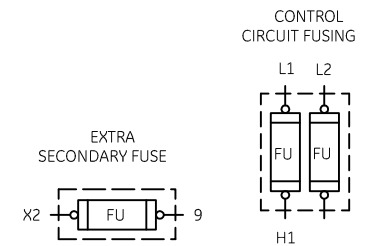


| MOTOR CONNECTIONS | SPEED | L1 | L2 | L3 | OPEN | TOGETHER |
|-------------------|-------------|----------|----------|----------|----------|----------|
| CONSTANT HP | LOW HIGH | T1 T6 | T2 T4 | T3 T5 | T1,T2,T3 | T4,T5,T6 |
| CONSTANT TORQUE | LOW HIGH | T1 T6 | T2 T4 | T3 T5 | T6,T4,T5 | T1,T2,T3 |
| VARIABLE TORQUE | LOW HIGH | T1 T6 | T2 T4 | T3 T5 | T6,T4,T5 | T1,T2,T3 |

| CONNECTION TABLE | CONTROLLER TERMINALS | | | | | |
|------------------|----------------------|----|----|----|----|----|
| | A | B | C | D | E | F |
| CONSTANT HP | T6 | T4 | T5 | T1 | T2 | T3 |
| CONSTSNT TORQUE | T1 | T2 | T3 | T6 | T4 | T5 |
| VARIABLE TORQUE | T1 | T2 | T3 | T6 | T4 | T5 |



| CONTACT | POSITION | | | |
|---------|----------|------|-----|------|
| | FAST | SLOW | OFF | AUTO |
| A1 | | | | X |
| A2 | | X | | |
| B1 | X | | | |
| B2 | | | X | |



imagination at work

WIRING DIAGRAM
 2 SPEED - 2 WINDING SIZE 2, 3, 4, 5 & 6

| AN # | THIRD ANGLE PROJECTION | SHEET # | DWG NO. | DATE | REV |
|---------|------------------------|---------|-----------|------------|-----|
| 09-9115 | | 1 OF 1 | 55-532826 | 09/08/2009 | 11 |