

-NOMENCLATURE-  
 F-FAST CONTACTOR  
 S-SLOW CONTACTOR  
 OL-OVERLOAD RELAY  
 I-INDICATING LIGHT  
 FU-FUSE  
 X-INDICATES CONTACT CLOSED  
 ALTERNATE LEGENDS FOR FAST AND SLOW  
 ARE HIGH AND LOW

NOTE: ADDITIONAL OVER-CURRENT PROTECTION  
 MAY BE REQUIRED. REFER TO THE  
 NATIONAL ELECTRICAL CODE OR LOCAL  
 ELECTRICAL CODE AS REQUIRED.

FOR EXTRA AUXILIARY CONTACTS - A MAXIMUM OF 4  
 CONTACTS MAY BE ADDED AT POSITIONS  
 W,X,Y & Z.

FOR CONTACTOR WITHOUT DISCONNECT MEANS-WIRE  
 LINE DIRECT TO L1,L2 AND L3 ON CONTACTOR.

FOR SEPARATE CONTROL SOURCE-REMOVE WIRES "A" & "B"  
 AND CONNECT SEPARATE CONTROL SOURCE TO 9 ON OL  
 AND TO 1 ON PILOT DEVICE. WIRES "A" & "B" ARE  
 OMITTED AT FACTORY ON ALL CONTROLLERS WITH  
 A COIL VOLTAGE OF 120V OR LESS.

GROUND KIT

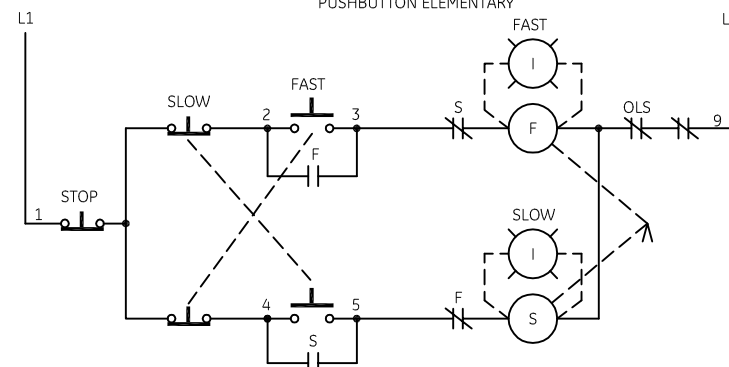
1/2-IN CONDUIT	55-213403G001
3/4-IN CONDUIT	55-213403G002
1-IN CONDUIT	55-213403G003
1 1/4-IN CONDUIT	55-213403G004
1 1/2-IN CONDUIT	55-213403G005
2-IN CONDUIT	55-213403G006
2 1/2-IN CONDUIT	55-213403G007
3-IN CONDUIT	55-213403G008

TERMINAL TIGHTENING TORQUE (LB-IN)

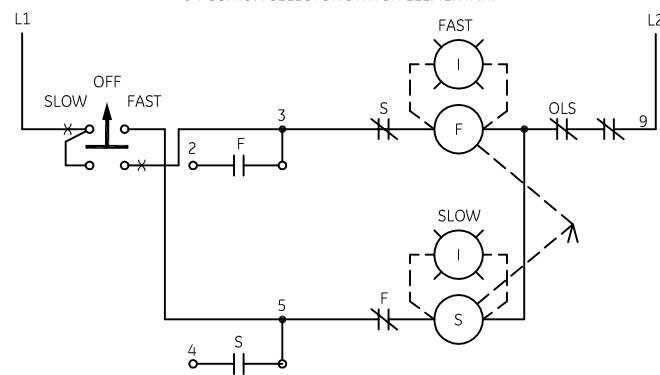
SIZE	LOAD SIDE		LINE SIDE		
	THERMAL OL	ELECTRONIC OL	CR309	CR310,390	CR311
2	50	20	50	AS MARKED	50
3	150	200	150	AS MARKED	50
4	200	200	200	AS MARKED	275

USE 75°C COPPER  
 CONDUCTORS ONLY, FOR  
 FIELD WIRING. TORQUE  
 LINE AND LOAD TERMINALS  
 AS SHOWN AT RIGHT:

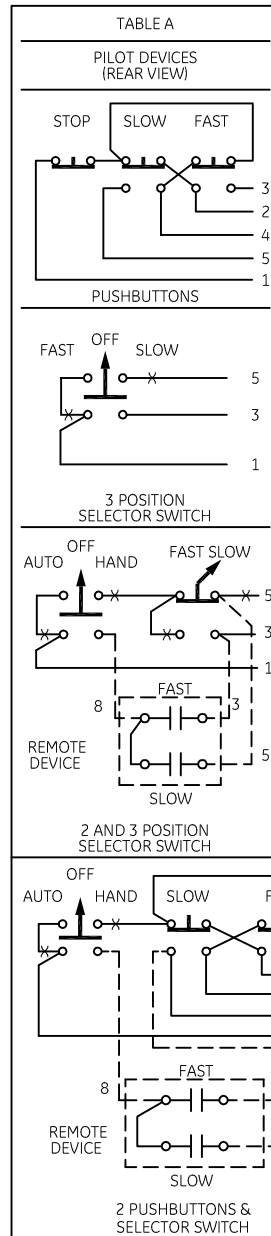
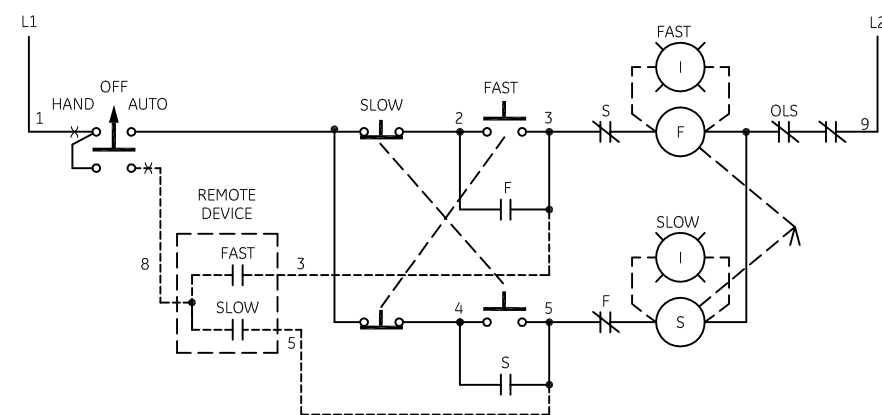
PUSHBUTTON ELEMENTARY



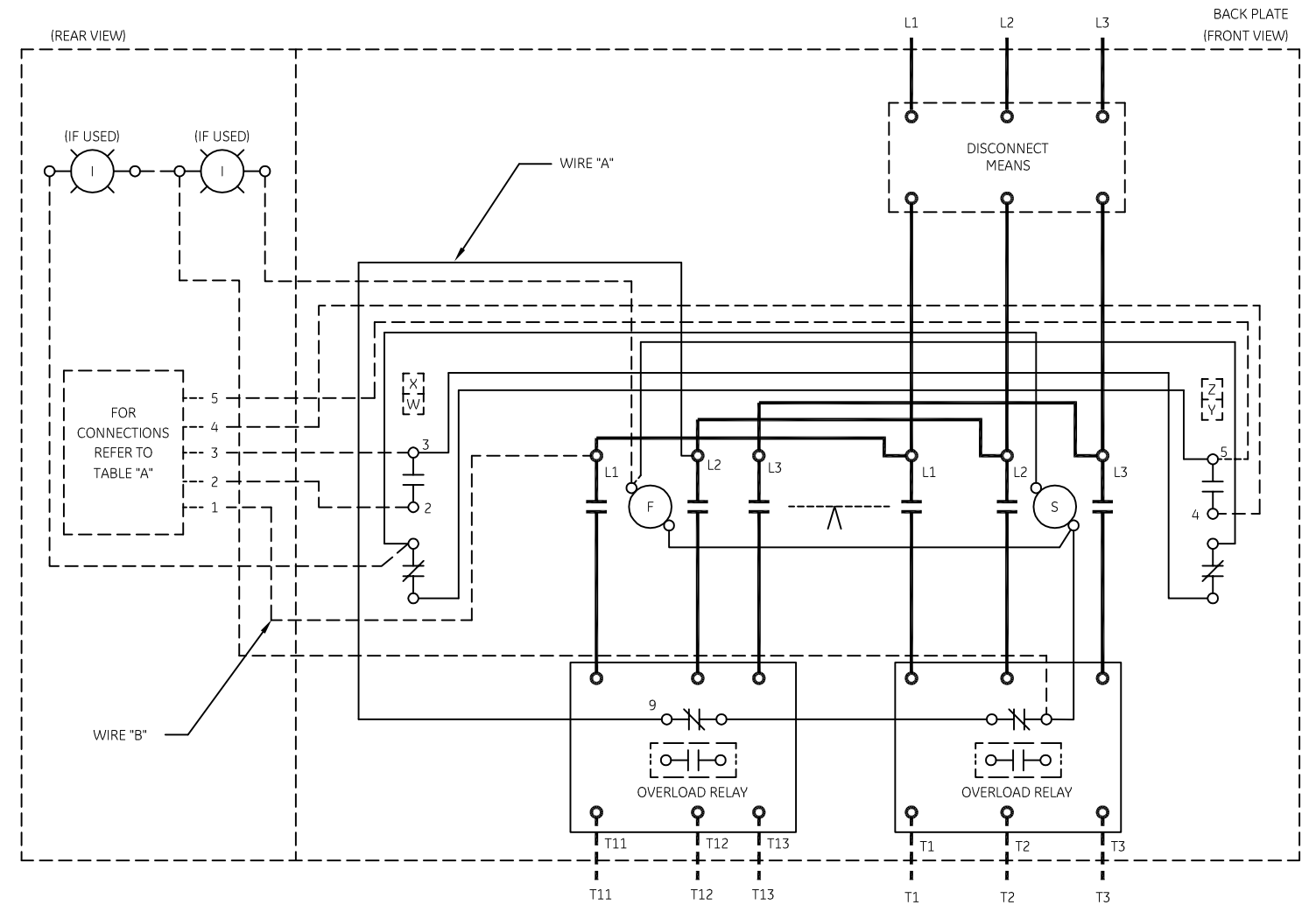
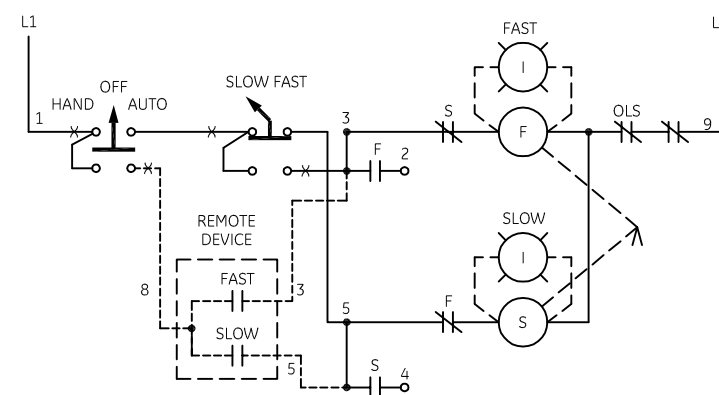
3 POSITION SELECTOR SWITCH ELEMENTARY



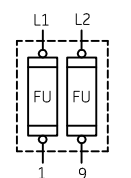
2 PUSHBUTTONS AND SELECTOR SWITCH ELEMENTARY



2 AND 3 POSITION SELECTOR SWITCH ELEMENTARY



CONTROL  
 CIRCUIT FUSING



GE imagination at work

WIRING DIAGRAM  
 2 SPEED - 2 WINDING SIZE 2, 3 & 4

AN #	THIRD ANGLE PROJECTION	SHEET #	DWG NO.	DATE	REV
09-9115		1 OF 1	55-532877	09/09/2009	7