

SELECTOR SWITCH

CONTACT	POSITION		
	AUTO	OFF	HAND
A1	X		
A2			X

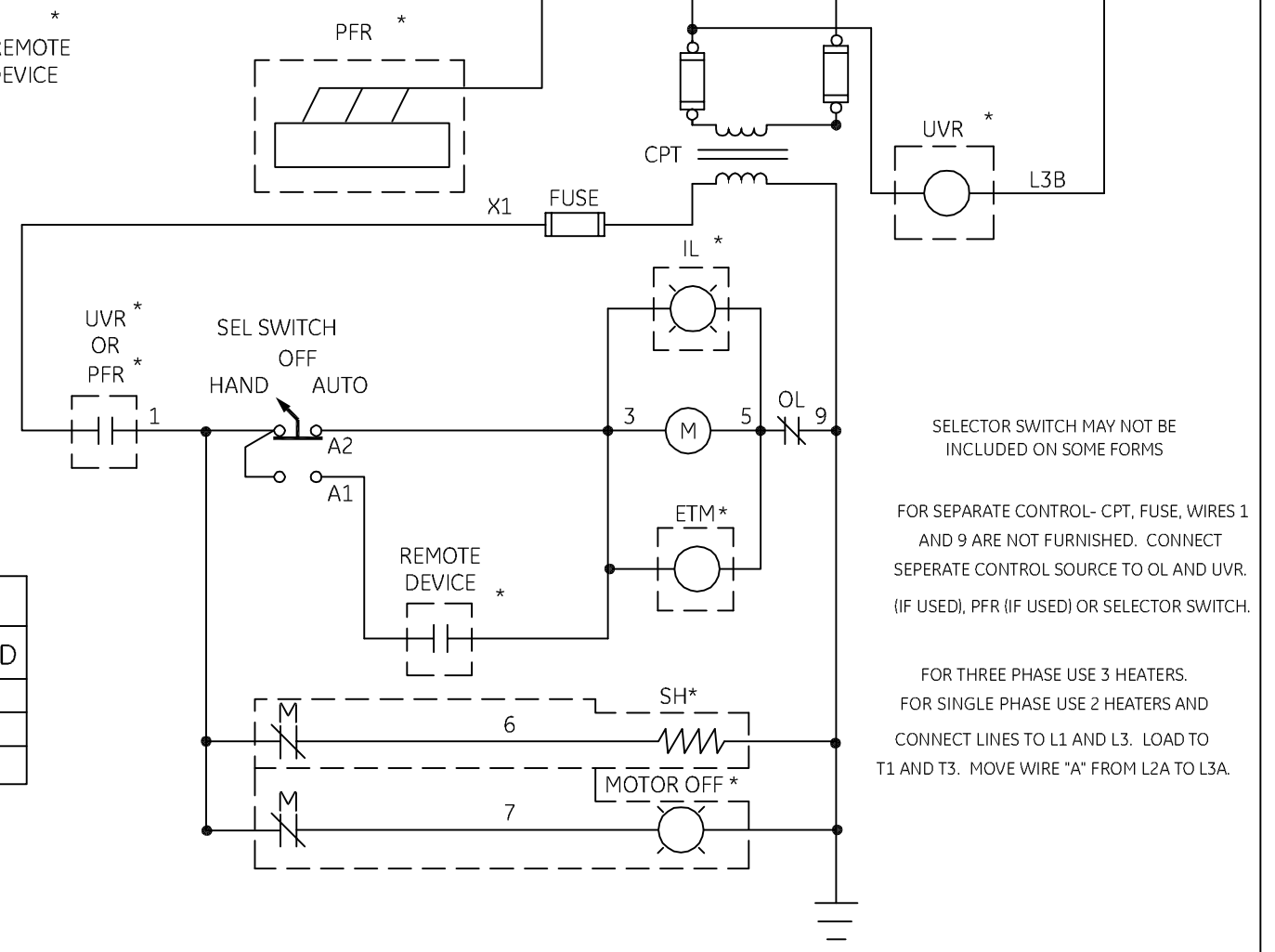
X-INDICATES CONTACT CLOSED

NOMENCLATURE

- IL INDICATING LIGHT
- M MOTOR CONTACTOR
- OL THERMAL OVERLOAD RELAY
- PB PUSHBUTTON
- PFR PHASE FAILURE RELAY
- UVR UNDERVOLTAGE RELAY
- * IF USED
- CT CURRENT TRANSFORMER
- CR CONTROL RELAY
- CPT CONTROL POWER TRANSFORMER
- SH SPACE HEATER
- ETM ELAPSED TIME METER
- CCF CONTROL CIRCUIT FUSING

USE 75°C, COPPER CONDUCTORS ONLY, FOR FIELD WIRING. TORQUE LINE AND LOAD TERMINALS AS SHOWN AT RIGHT:

SIZE	LINE	LOAD	LINE	LOAD
1	AS MARKED	20 LB-IN	35 LB-IN	20 LB-IN
2	AS MARKED	50 LB-IN	50 LB-IN	50 LB-IN
3	AS MARKED	150 LB-IN	50 LB-IN	150 LB-IN
4	AS MARKED	200 LB-IN	275 LB-IN	200 LB-IN
5	AS MARKED	300 LB-IN	AS MARKED	300 LB-IN



SELECTOR SWITCH MAY NOT BE INCLUDED ON SOME FORMS

FOR SEPARATE CONTROL- CPT, FUSE, WIRES 1 AND 9 ARE NOT FURNISHED. CONNECT SEPARATE CONTROL SOURCE TO OL AND UVR. (IF USED), PFR (IF USED) OR SELECTOR SWITCH.

FOR THREE PHASE USE 3 HEATERS. FOR SINGLE PHASE USE 2 HEATERS AND CONNECT LINES TO L1 AND L3. LOAD TO T1 AND T3. MOVE WIRE "A" FROM L2A TO L3A.

USE 75° COPPER CONDUCTORS ONLY FOR FIELD WIRING. TORQUE LINE AND LOAD TERMINALS AS MARKED OR AS SHOWN IN TABLE BELOW.

SIZE	LINE	LOAD
	FUSIBLE DISCONNECT SWITCHES	CR305 CR306
5	AS MARKED	300 LB-IN
6	AS MARKED	375 LB-IN

NOTE: REFER TO THE NATIONAL ELECTRICAL CODE. ADDITIONAL CONTROL CIRCUIT OVER-CURRENT PROTECTION MAY BE REQUIRED.

GE imagination at work

WIRING DIAGRAM
PUMP PANEL (CR340, 341)

AN #	THIRD ANGLE PROJECTION	SHEET #	DWG NO.	DATE	REV
09-9121		1 OF 1	55-533811	10/06/2009	5