

-NOMENCLATURE-  
 F-FAST CONTACTOR  
 S-SLOW CONTACTOR  
 OL-THERMAL OVERLOAD RELAY  
 I-INDICATING LIGHT  
 FU-FUSE  
 X-INDICATES CONTACT CLOSED  
 TR-TIMER(Delay on energization relay)  
 T.C.-TIME CLOSING CONTACT  
 T.O.-"OPENING"  
 ALTERNATE LEGENDS FOR FAST AND SLOW  
 ARE HIGH AND LOW

FOR CSA GROUND KIT,  
 ORDER KIT NUMBER FROM THE FOLLOWING TABLE:

KIT NUMBER	CONDUIT SIZE
55-213403G001	1/2-INCH
55-213403G002	3/4-INCH
55-213403G003	1-INCH
55-213403G004	1-1/4-INCH
55-213403G005	1-1/2-INCH
55-213403G006	2-INCH
55-213403G007	2-1/2-INCH

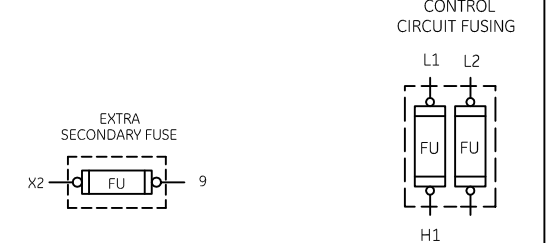
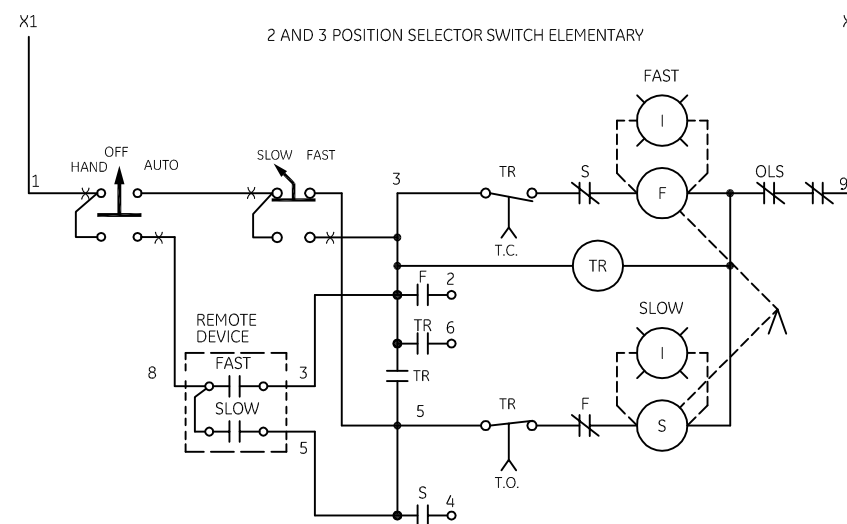
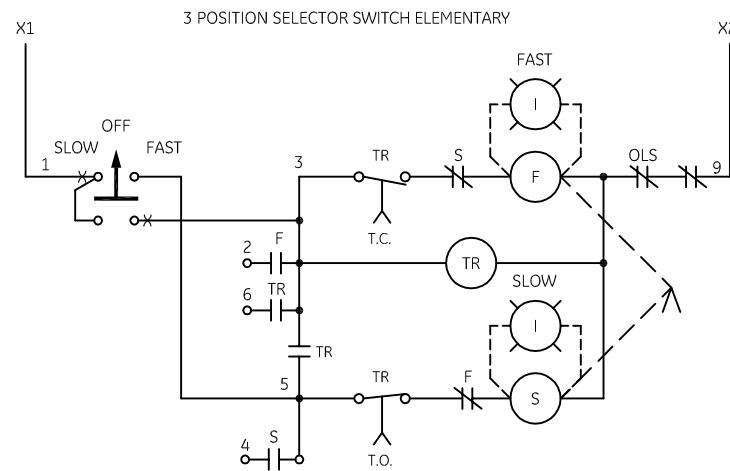
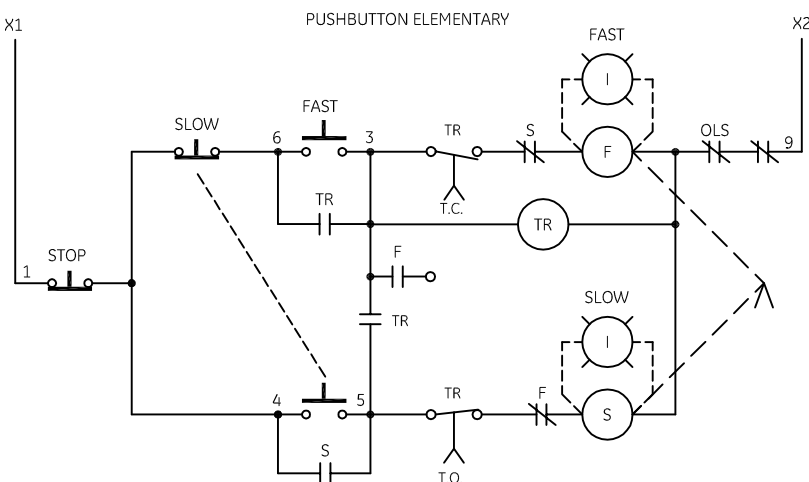
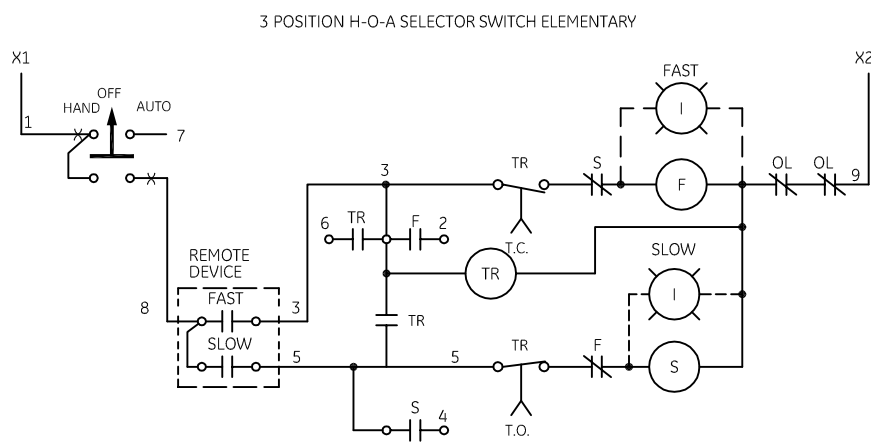
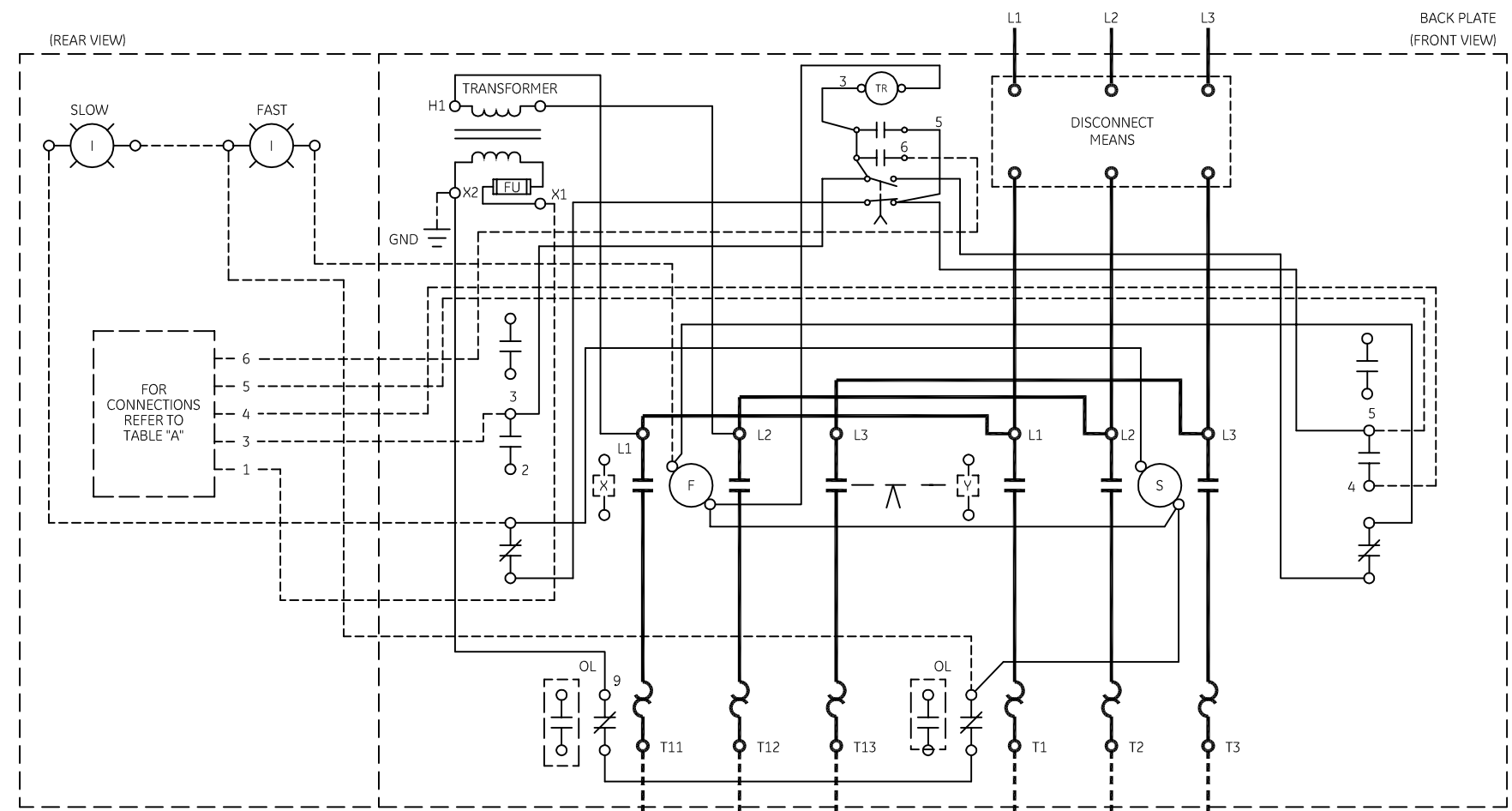
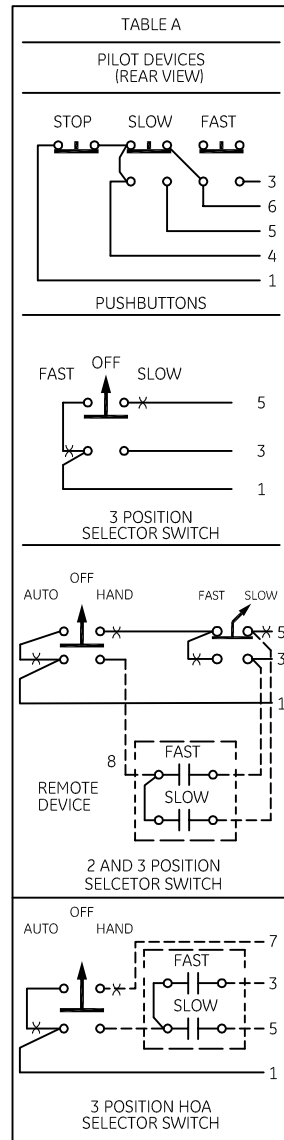
NOTE: ADDITIONAL OVER-CURRENT PROTECTION  
 MAY BE REQUIRED. REFER TO THE  
 NATIONAL ELECTRICAL CODE OR LOCAL  
 ELECTRICAL CODE AS REQUIRED.

FOR EXTRA AUXILIARY CONTACTS- A MAXIMUM OF 2  
 CONTACTS MAY BE ADDED AT POSITIONS  
 X & Y.

FOR CONTROLLER WITHOUT DISCONNECT MEANS-WIRE  
 LINE DIRECT TO L1, L2 AND L3 ON CONTROLLER.

USE 75°C COPPER  
 CONDUCTORS ONLY, FOR  
 FIELD WIRING. TORQUE  
 LINE AND LOAD TERMINALS  
 AS SHOWN AT RIGHT:

CR	LINE	LOAD
CR309	20 LB-IN	20 LB-IN
CR310	AS MARKED	20 LB-IN
CR311	35 LB-IN	20 LB-IN
CR390	AS MARKED	20 LB-IN



GE imagination at work

WIRING DIAGRAM  
 2 SPEED - 2 WINDING SIZE 0 & 1

AN #	THIRD ANGLE PROJECTION	SHEET #	DWG NO.	DATE	REV
09-9115		1 OF 1	55-534715	09/07/2009	2