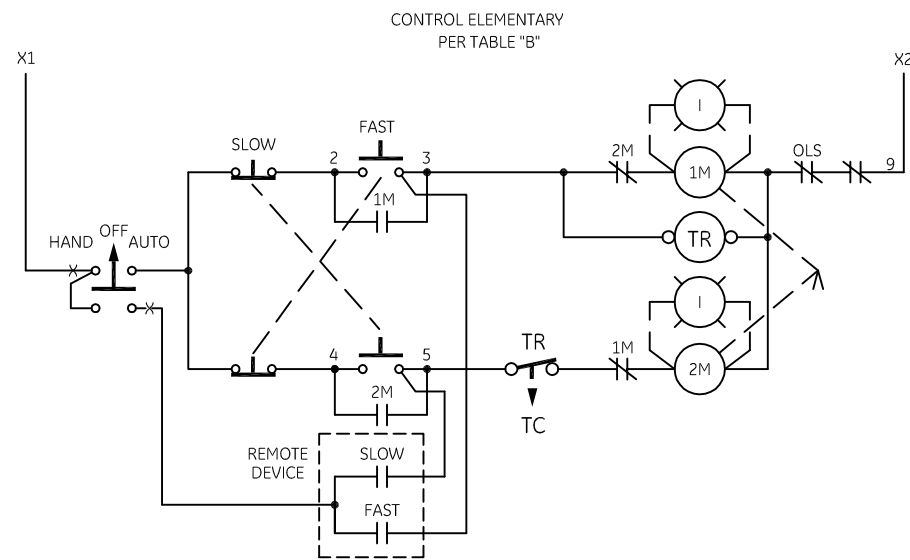


HIGH & LOW ARE ALTERNATE MARKINGS FOR FAST & SLOW

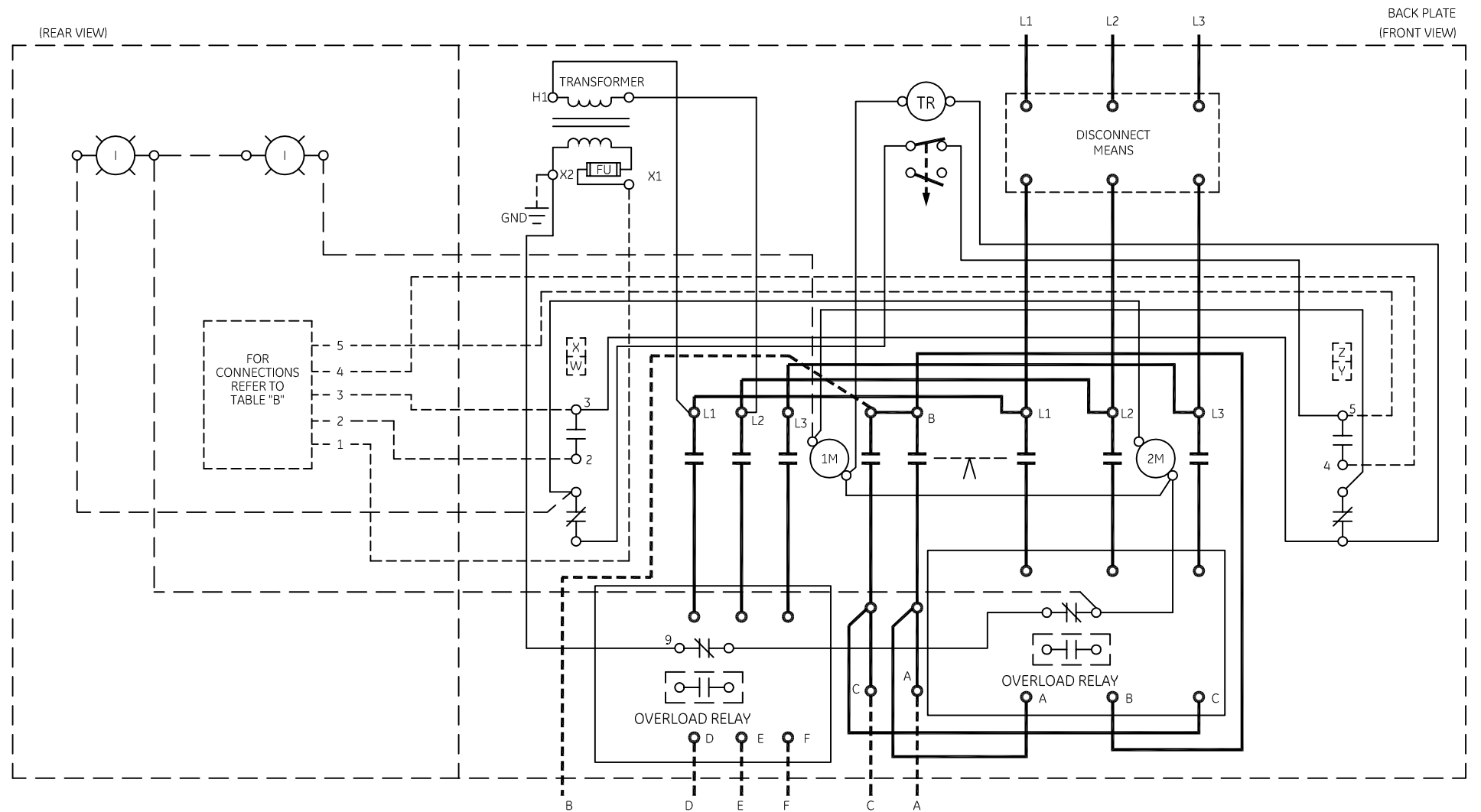


-NOMENCLATURE-  
 1M,2M-CONTACTORS  
 OL-THERMAL OVERLOAD RELAY  
 I-INDICATING LIGHT  
 FU-FUSE  
 X-INDICATES CONTACT CLOSED  
 TR-DECELERATING TIMER

FOR CSA GROUND KIT,  
 ORDER KIT NUMBER FROM THE FOLLOWING TABLE:

KIT NUMBER	CONDUIT SIZE
55-213403G001	1/2-INCH
55-213403G002	3/4-INCH
55-213403G003	1-INCH
55-213403G004	1-1/4-INCH
55-213403G005	1-1/2-INCH
55-213403G006	2-INCH
55-213403G007	2-1/2-INCH

CONNECTION TABLE	CONTROLLER TERMINALS					
	A	B	C	D	E	F
CONSTANT TORQUE	T1	T2	T3	T6	T4	T5
VARIABLE TORQUE	T1	T2	T3	T6	T4	T5
MOTOR CONNECTIONS	SPEED	L1	L2	L3	OPEN	TOGETHER
CONSTANT TORQUE	SLOW FAST	T1 T6	T2 T4	T3 T5	T6,T4,T5	T1,T2,T3
VARIABLE TORQUE	SLOW FAST	T1 T6	T2 T4	T3 T5	T6,T4,T5	T1,T2,T3



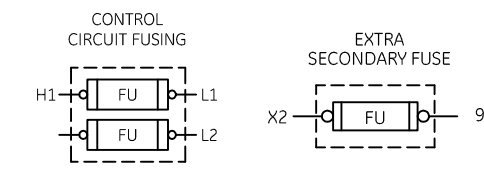
WIRE MOTOR TO CONTROLLER PER CONNECTION TABLE

NOTE: REFER TO THE NATIONAL ELECTRICAL CODE. ADDITIONAL CONTROL CIRCUIT OVER-CURRENT PROTECTION MAY BE REQUIRED.

FOR EXTRA AUXILIARY CONTACTS - A MAXIMUM OF 4 CONTACTS MAY BE ADDED AT POSITIONS W,X,Y & Z.

FOR CONTACTOR WITHOUT DISCONNECT MEANS-WIRE LINE DIRECT TO L1,L2 AND L3 ON CONTACTOR.

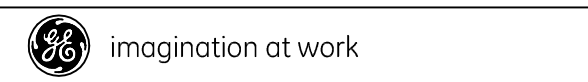
FACTORY SUPPLIED PILOT DEVICES ARE WIRED PER TABLE "B". FOR CONSTANT HP MOTORS CONSULT FACTORY FOR ADDITIONAL INSTRUCTIONS.



TERMINAL TIGHTENING TORQUE (LB-IN)

SIZE	LOAD SIDE		LINE SIDE		
	THERMAL OL	ELECTRONIC OL	CR309	CR310,390	CR311
2	50	20	50	AS MARKED	50
3	150	200	150	AS MARKED	50
4	200	200	200	AS MARKED	275

USE 75°C COPPER CONDUCTORS ONLY, FOR FIELD WIRING. TORQUE LINE AND LOAD TERMINALS AS SHOWN AT RIGHT:



AN #	THIRD ANGLE PROJECTION	SHEET #	WIRING DIAGRAM 2 SPEED - 1 WINDING SIZE 2, 3 & 4		
09-9115		1 OF 1	DWG NO. 55-536277	DATE 09/08/2009	REV 4