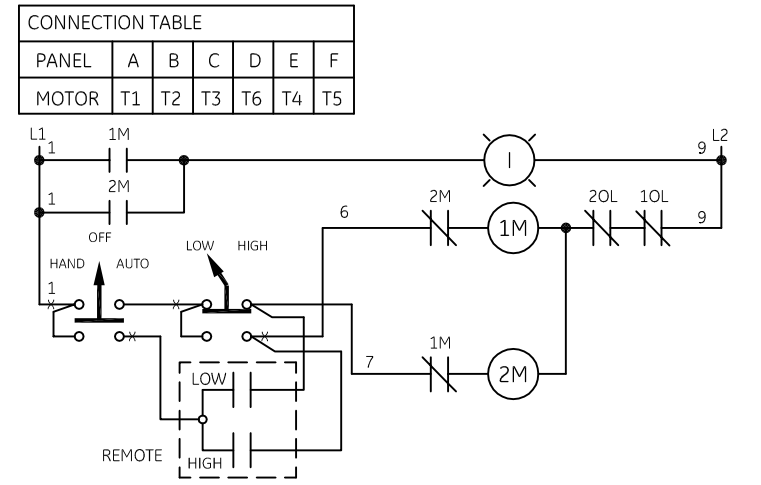


-GEM 1000 MOTOR CONNECTIONS-

THREE-PHASE, TWO-SPEED, ONE-WINDING	
<b>CONSTANT TORQUE</b>	<b>VARIABLE TORQUE</b>
SPEED L1 L2 L3 OPEN TOGETHER	SPEED L1 L2 L3 OPEN TOGETHER
1 LOW T1 T2 T3 ALL OTHERS	1 LOW T1 T2 T3 ALL OTHERS
2 HIGH T6 T4 T5	2 HIGH T6 T4 T5
	T1, T2, T3

INSTALL OVERLOAD HEATERS		
FOR	LOW SPEED	HIGH SPEED
IN	2OL	1OL



-NOMENCLATURE-

1M&2M-SPEED CONTACTORS MECHANICALLY & ELECTRICALLY INTERLOCKED.

1OL,2OL-OVERLOAD RELAYS

I-INDICATING LIGHT

FU-FUSE

X-INDICATES CONTACT CLOSED

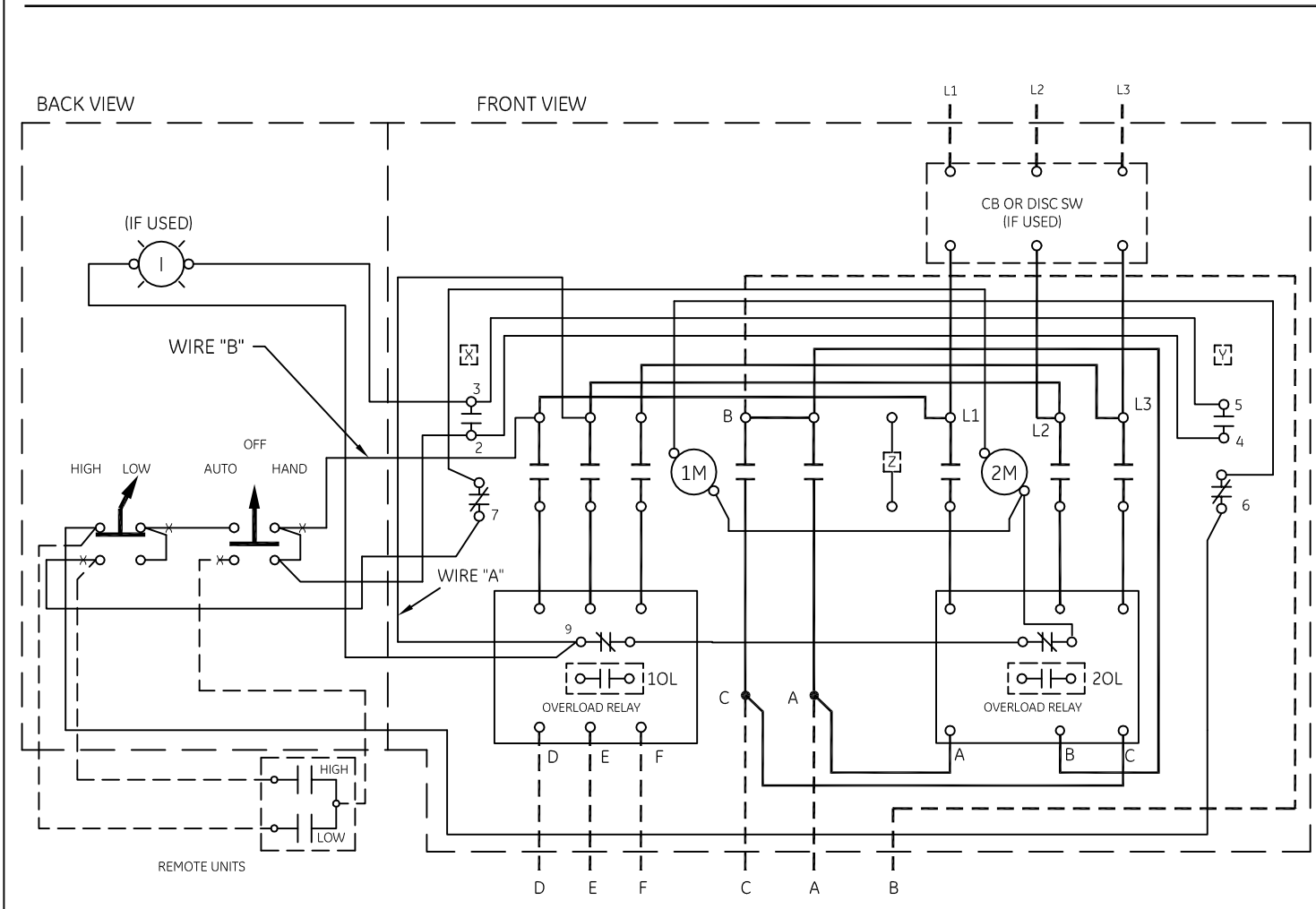
ALTERNATE LEGENDS FOR FAST AND SLOW ARE HIGH AND LOW

ALTERNATE LEGEND FOR STOP IS OFF

FOR SEPARATE CONTROL SOURCE - REMOVE WIRE "A" & "B" AND CONNECT CONTROL SOURCE TO 9 ON OL AND TO 1 ON PILOT DEVICE. WIRE "A" & "B" HAVE BEEN OMITTED AT FACTORY ON ALL FORMS HAVING A COIL VOLTAGE OF 120V OR LESS.

	LINE	LOAD
USE 75°C, COPPER CONDUCTORS ONLY, FOR FIELD WIRING. TORQUE LINE AND LOAD TERMINALS AS SHOWN AT RIGHT:	CR309 20 LB-IN	20 LB-IN
	CR310 AS MARKED	20 LB-IN
	CR311 35 LB-IN	20 LB-IN
	CR390 AS MARKED	20 LB-IN

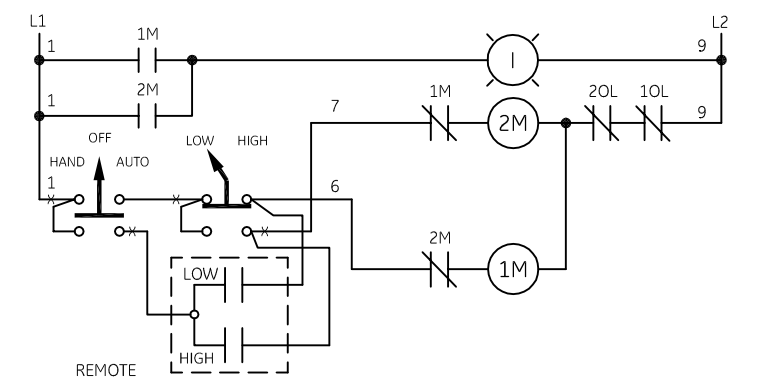
NOTE: ADDITIONAL OVER-CURRENT PROTECTION MAY BE REQUIRED. REFER TO THE NATIONAL ELECTRICAL CODE OR LOCAL ELECTRICAL CODE AS REQUIRED.



GEM 1000 MOTOR CONNECTIONS

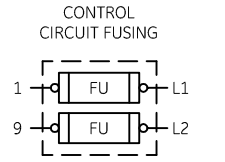
THREE-PHASE, TWO SPEED, ONE-WINDING	
	<b>CONSTANT HORSEPOWER</b>
SPEED L1 L2 L3 OPEN TOGETHER	
1 LOW T1 T2 T3	T4, T5, T6
2 HIGH T6 T4 T5	T1, T2, T3

INSTALL OVERLOAD HEATERS		
FOR	LOW SPEED	HIGH SPEED
IN	1OL	2OL



GROUND KIT

1/2-IN CONDUIT	55-213403G001
3/4-IN CONDUIT	55-213403G002
1-IN CONDUIT	55-213403G003
1 1/4-IN CONDUIT	55-213403G004
1 1/2-IN CONDUIT	55-213403G005
2-IN CONDUIT	55-213403G006
2 1/2-IN CONDUIT	55-213403G007
3-IN CONDUIT	55-213403G008



WIRING DIAGRAM  
2 SPEED - 1 WINDING SIZE 0 & 1

AN #	THIRD ANGLE PROJECTION	SHEET #	DWG NO.	DATE	REV
09-9115		1 OF 1	55-536542	09/09/2009	3