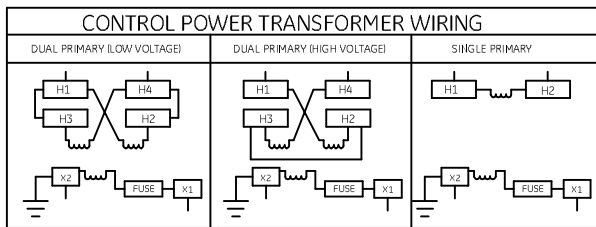
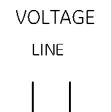
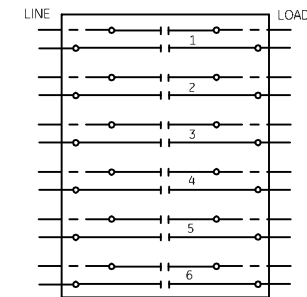
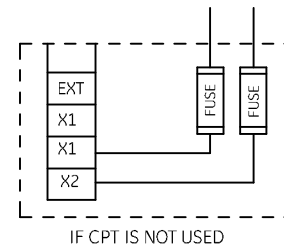


CONTACTS IN POSITIONS 1 THROUGH 4 CAN BE USED AS EITHER N/O OR N/C

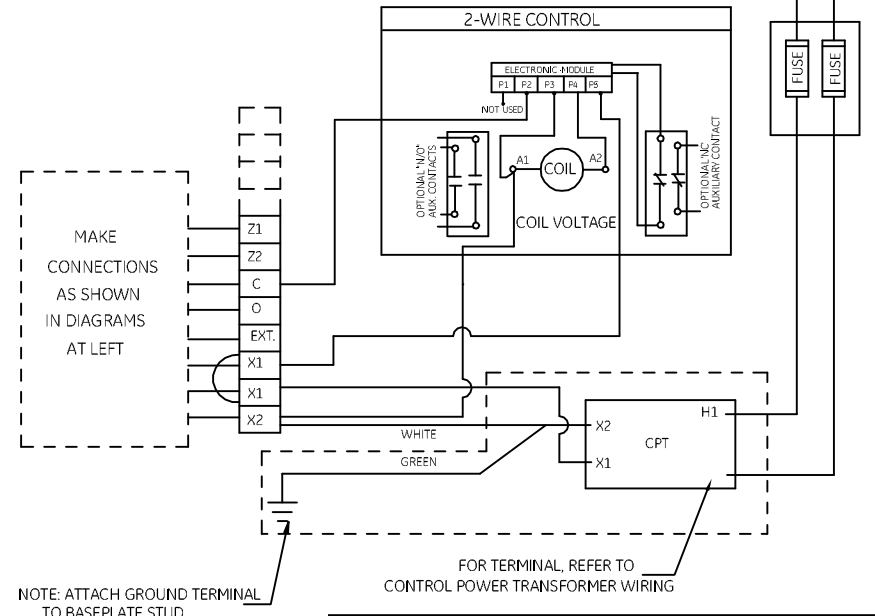
CONTACTS IN POSITIONS 5 THROUGH 6 CAN BE USED ONLY AS N/O.

MAIN CONTACTS ARE SHOWN IN OPEN POSITION

LINE AND LOAD TERMINALS ARE REVERSIBLE



CR463M MECHANICALLY HELD CONTACTOR WIRING OPTIONS
USE FOR 2- WIRE CONTROL, WHEN COIL VOLTAGE IS SAME AS CONTROL VOLTAGE.



NOTE: REFER TO THE NATIONAL ELECTRIC OR LOCAL ELECTRIC CODE AS REQUIRED. CODE

USE 75°C COPPER CONDUCTORS ONLY FOR FIELD WIRING. TORQUE LINE AND LOAD TERMINALS TO 35 LB.IN.

ADDITIONAL OVER-CURRENT PROTECTION FOR CONTROL CIRCUIT MAY BE REQUIRED.

POWER TERMINALS : #14-#8AWG (#8 STRANDED ONLY) COPPER, SINGLE OR PARALLEL CONDUCTORS OF ANY COMBINATION
COIL AND MODULE TERMINALS : #18-#14 AWG COPPER, SINGLE OR PARALLEL CONDUCTORS OF ANY COMBINATION

WHEN COIL AND LINE VOLTAGES ARE SAME, THE CONTROL VOLTAGE MAY BE DERIVED FROM THE LINE FOR SUPPLY

AUXILIARY CONTACT TERMINALS: #22-#12A WG COPPER, SINGLE OR PARALLEL CONDUCTORS OF ANY COMBINATION

FOR CSA-GND KIT
1/2-IN CONDUIT 55-213403G001 3/4-IN CONDUIT 55-213403G002
1-IN CONDUIT 55-213403G003 1 1/4-IN CONDUIT 55-213403G004
1 1/2-IN CONDUIT 55-213403G005 2-IN CONDUIT 55-213403G006
2 1/2-IN CONDUIT 55-213403G007 3-IN CONDUIT 55-213403G008

AN #	THIRD ANGLE PROJECTION	SHEET #
10-9123		1 OF 1

imagination at work

WIRING DIAGRAM
CR463M LIGHTING CONTACTOR

DWG NO.	DATE	REV
55-537556	07/13/2009	4