

NOTE: ADDITIONAL OVER-CURRENT PROTECTION MAY BE REQUIRED. REFER TO THE NATIONAL ELECTRICAL CODE OR LOCAL ELECTRICAL CODE AS REQUIRED.

FOR EXTRA AUXILIARY CONTACTS- A MAXIMUM OF 4 CONTACTS MAY BE ADDED AT POSITIONS W, X, Y, & Z.

FOR CONTROLLER WITHOUT DISCONNECT MEANS- WIRE LINE DIRECT TO L1, L2 AND L3 ON CONTROLLER.

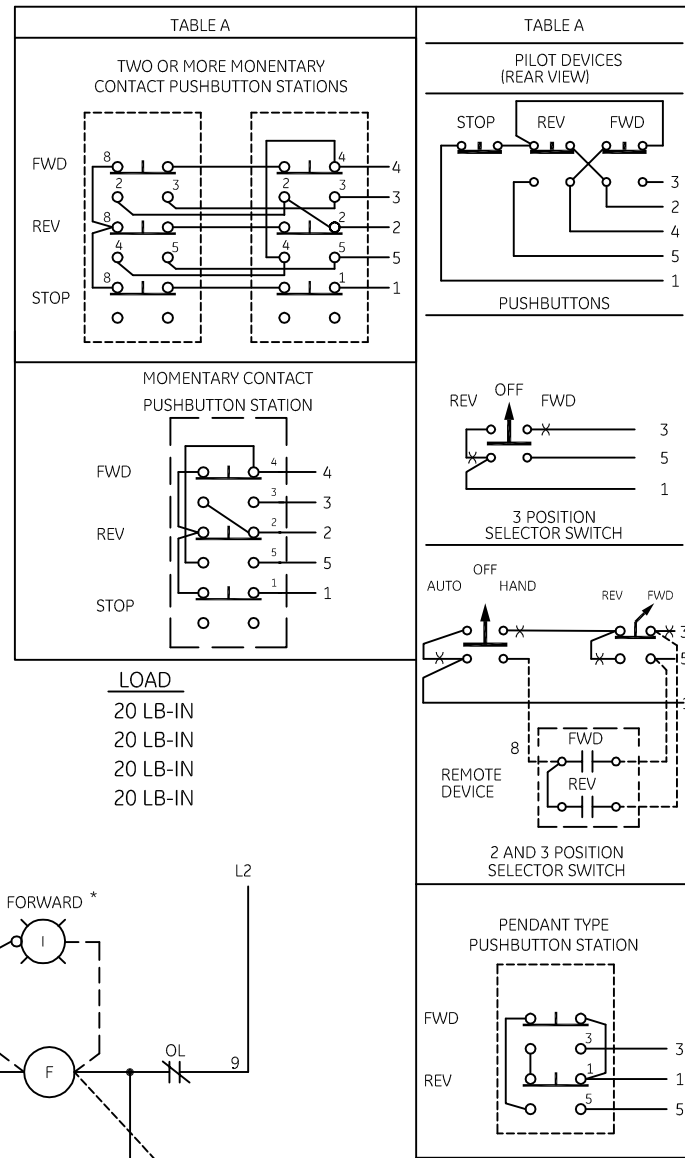
ALTERNATE MARKINGS FOR FORWARD AND REVERSE ARE OPEN AND CLOSE, AND UP AND DOWN.

WIRES B AND C HAVE BEEN OMITTED AT FACTORY. IF LIMIT SWITCHES ARE NOT TO BE USED, WIRES B AND C MUST BE ADDED.

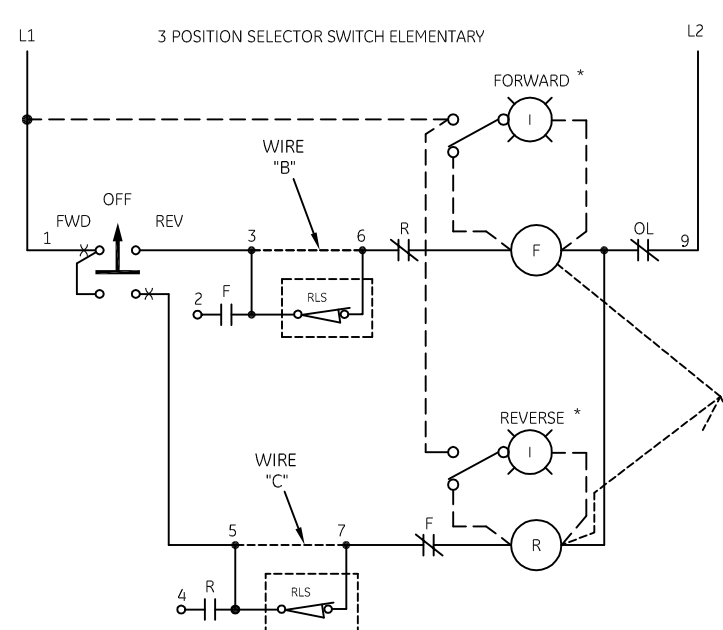
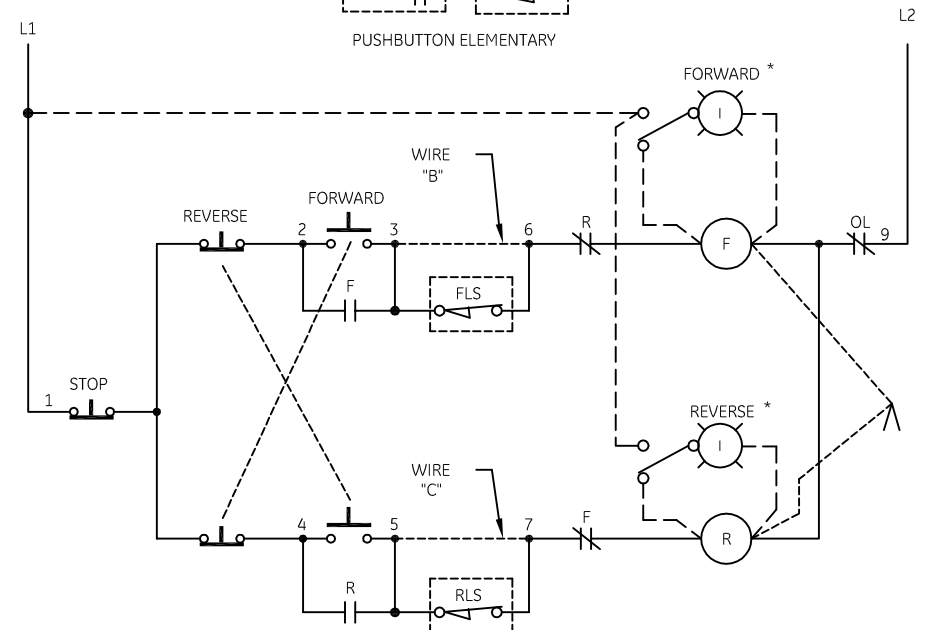
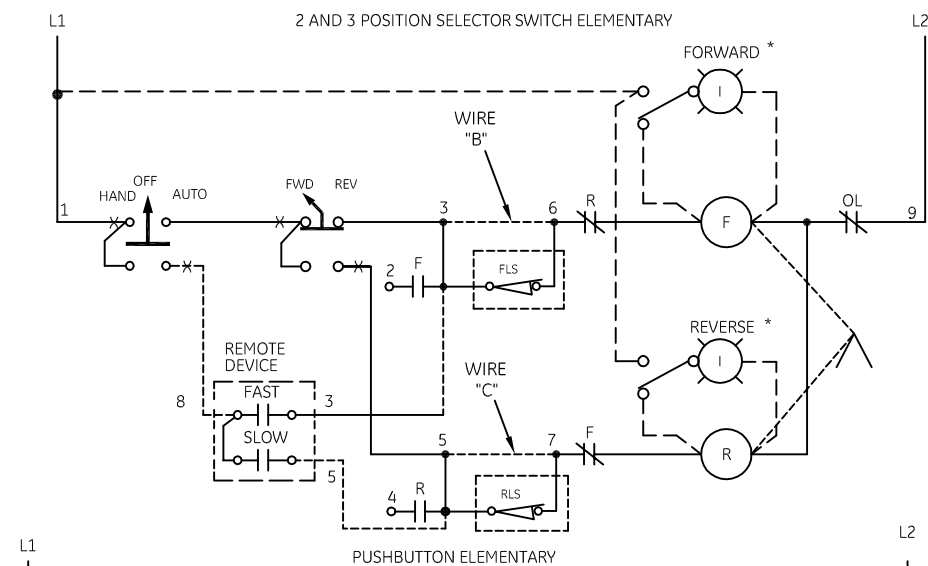
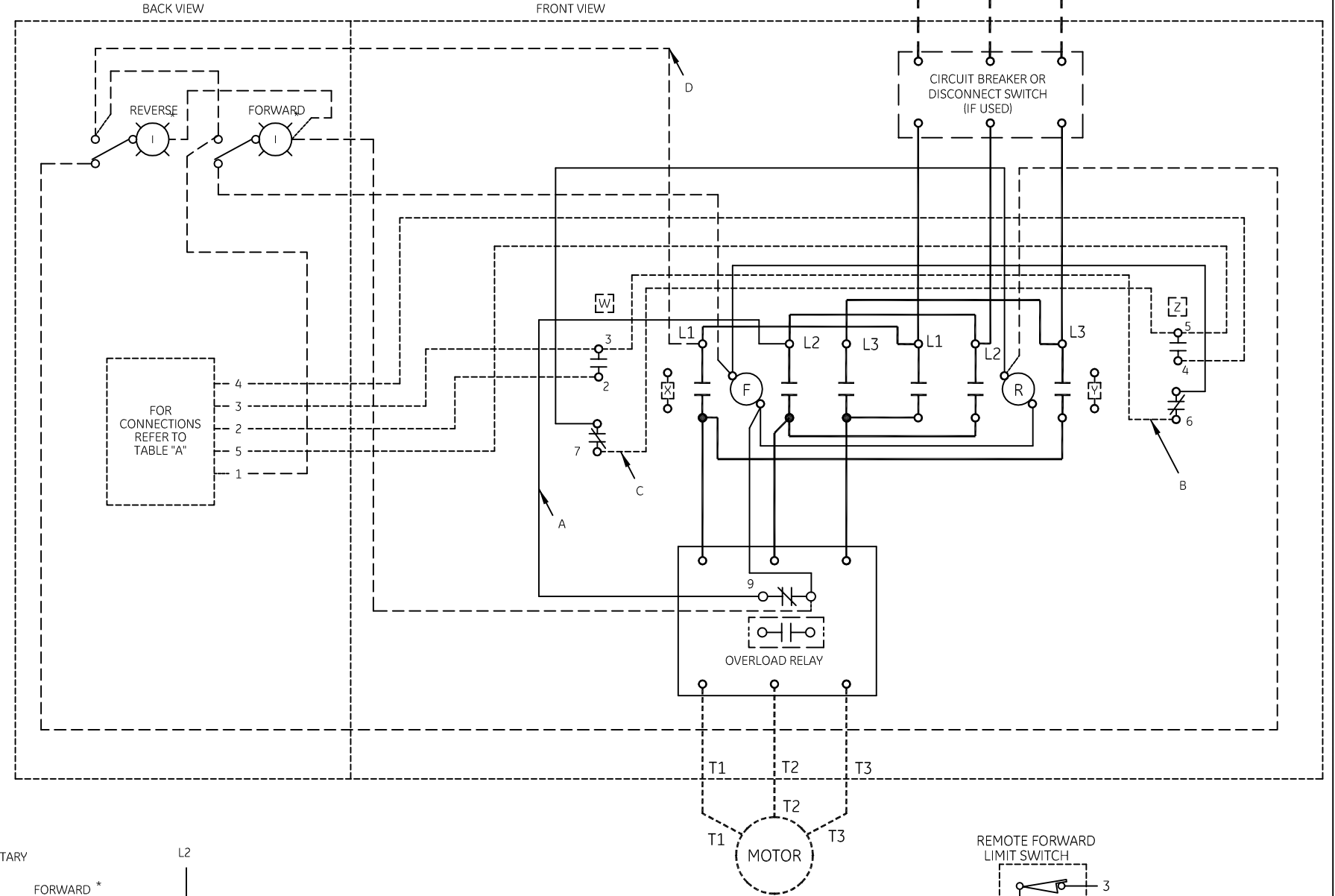
GROUND KIT

| | |
|------------------|---------------|
| 1/2-IN CONDUIT | 55-213403G001 |
| 3/4-IN CONDUIT | 55-213403G002 |
| 1-IN CONDUIT | 55-213403G003 |
| 1 1/4-IN CONDUIT | 55-213403G004 |
| 1 1/2-IN CONDUIT | 55-213403G005 |
| 2-IN CONDUIT | 55-213403G006 |
| 2 1/2-IN CONDUIT | 55-213403G007 |
| 3-IN CONDUIT | 55-213403G008 |

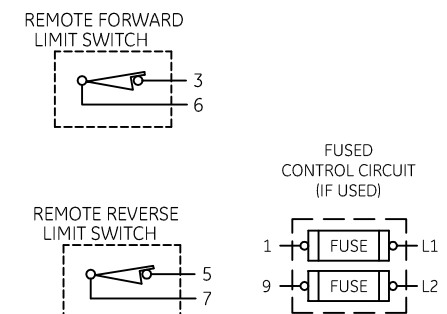
| | LINE | LOAD |
|---|-----------------|----------|
| USE 75°C, COPPER CONDUCTORS ONLY, FOR FIELD WIRING. TORQUE LINE AND LOAD TERMINALS AS SHOWN AT RIGHT: | CR309 20 LB-IN | 20 LB-IN |
| | CR310 AS MARKED | 20 LB-IN |
| | CR311 35 LB-IN | 20 LB-IN |
| | CR390 AS MARKED | 20 LB-IN |



-NOMENCLATURE-
 F-FORWARD CONTACTOR
 R-REVERSE CONTACTOR
 OL-OVERLOAD RELAY
 I-INDICATING LIGHT
 FU-FUSE
 X-INDICATES CONTACT CLOSED
 FLS-FORWARD LIMIT SWITCH
 RLS-REVERSE LIMIT SWITCH
 FWD-FORWARD
 REV-REVERSE



FOR SEPARATE CONTROL SOURCE-REMOVE WIRES "A" & "D" AND CONNECT SEPARATE CONTROL SOURCE TO 9 ON OL AND TO 1 ON PILOT DEVICE. WIRES "A" & "D" ARE OMITTED AT FACTORY ON ALL CONTROLLERS WITH A COIL VOLTAGE OF 120V OR LESS.



GE imagination at work

**WIRING DIAGRAM
 REVERSER SIZE 0 & 1**

| | | | | | |
|---------|------------------------|---------|-----------|------------|-----|
| AN # | THIRD ANGLE PROJECTION | SHEET # | DWG NO. | DATE | REV |
| 09-9115 | | 1 OF 1 | 55-537736 | 09/11/2009 | 2 |